

108°W 107°59'W 107°58'W 107°57'W 107°56'W 107°55'W 107°54'W 107°53'W 107°52'W 107°51'W 107°50'W 107°49'W 107°48'W 107°47'W 107°46'W 107°45'W 107°44'W 107°43'W 107°42'W 107°41'W 107°40'W 107°39'W 107°38'W

45°N 44°59'N 44°58'N 44°57'N 44°56'N 44°55'N 44°54'N 44°53'N 44°52'N 44°51'N 44°50'N 44°49'N 44°48'N

45°N 44°59'N 44°58'N 44°57'N 44°56'N 44°55'N 44°54'N 44°53'N 44°52'N 44°51'N 44°50'N 44°49'N 44°48'N

IAP

Crater Ridge
WY-BHF-000280

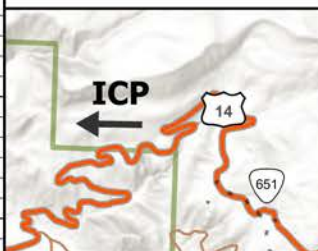
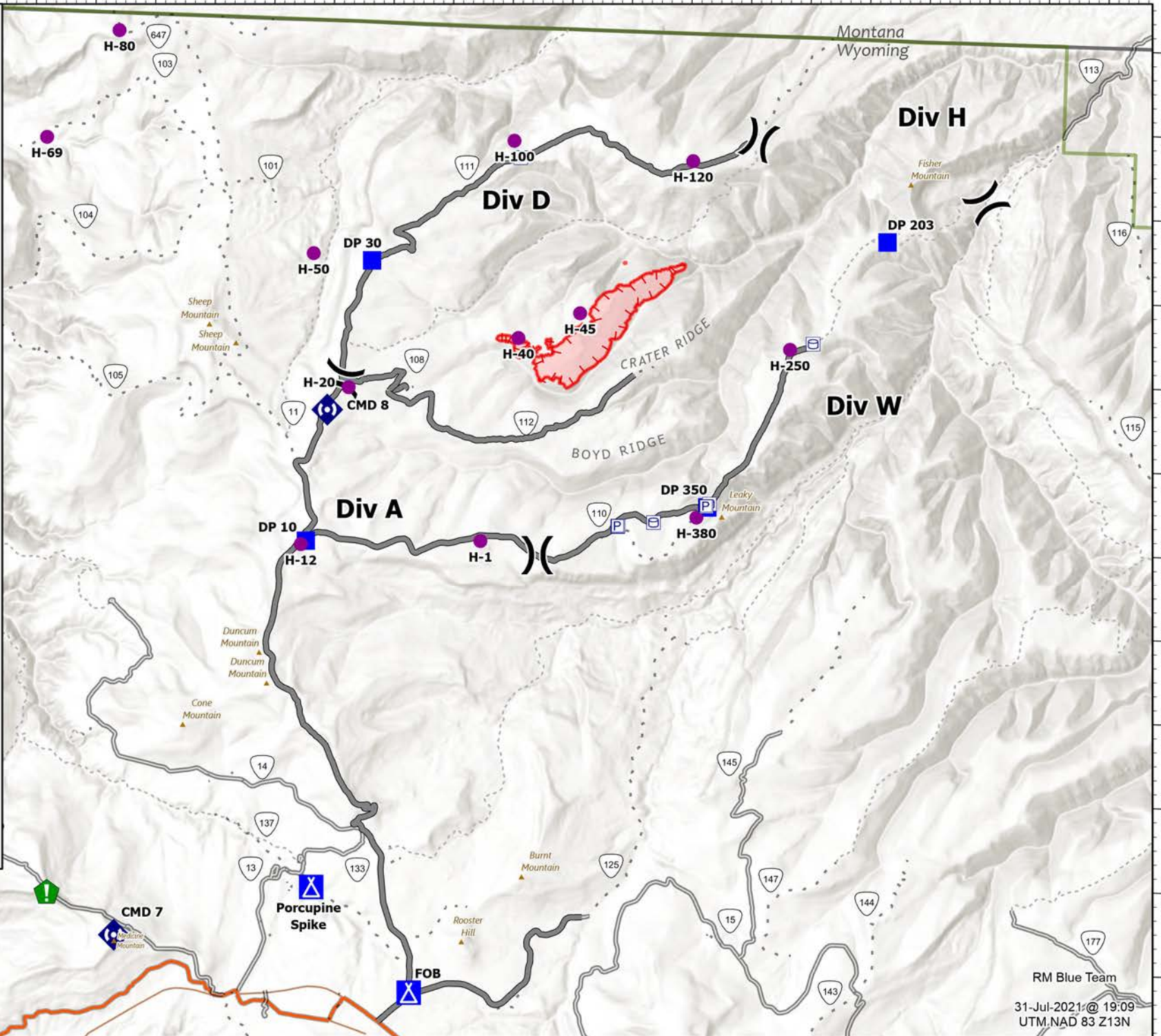
8/1/2021

685 ac 7/30/2021 1100

GPS Flight



- Pump
- Water Tank
- Helispot
- Division Break
- Drop Point
- Camp
- Resource Location
- Repeater
- Wildfire Daily Fire Perimeter
- Access or Improved Road
- Fire Edge
- Trail
- Gravel Road, Suitable for Passenger Car
- Not Maintained for Passenger Car
- Highway
- Local Road



RM Blue Team
31-Jul-2021 @ 19:09
UTM.NAD 83 Z13N