

# Air Operations

## Crater Ridge

### WY-BHF-000280

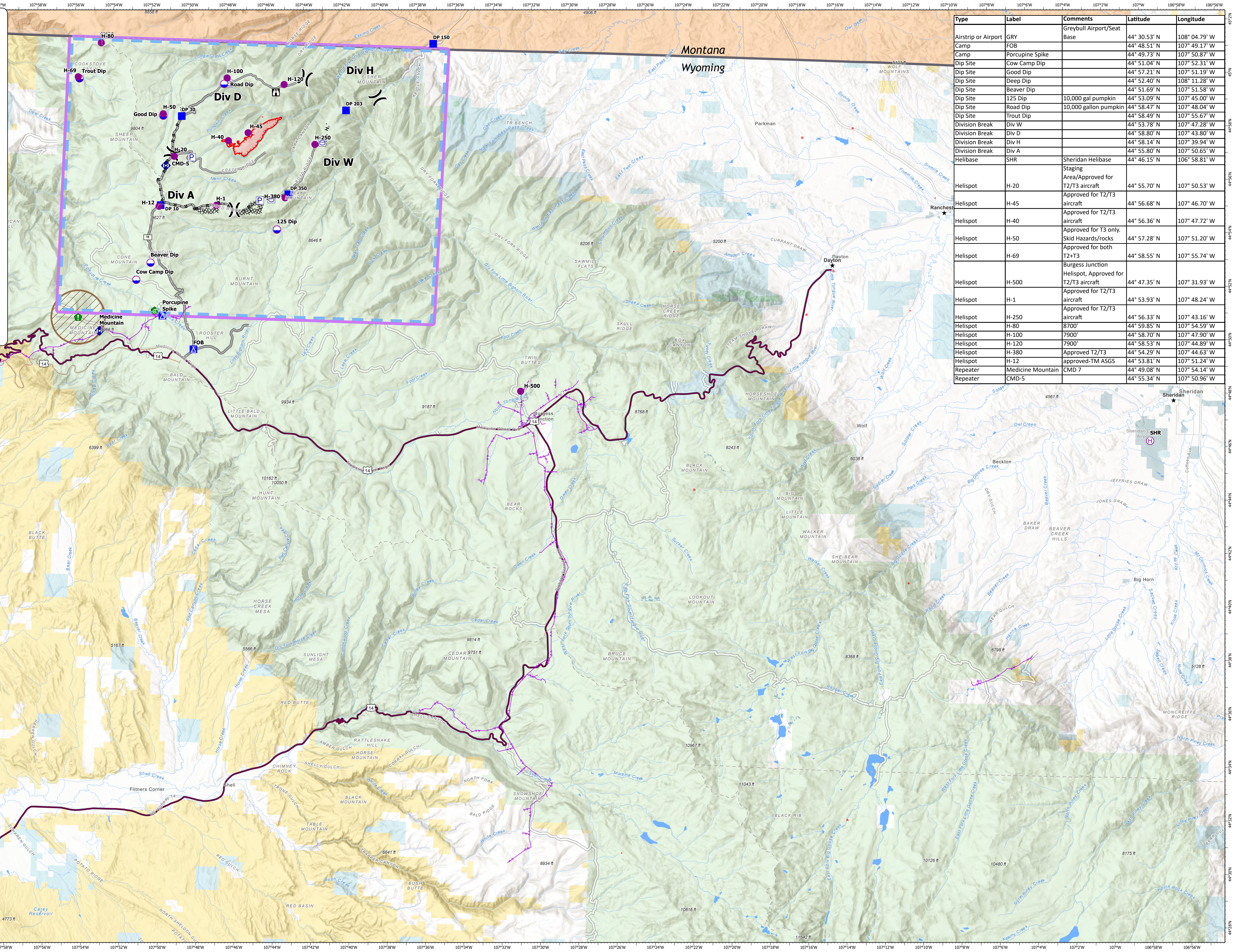
8/2/2021

685 Ac. at  
7/30/2021 1100  
from GPS flight



0 2 4  
Miles

- Pump
- Water Tank
- Airstrip or Airport
- Dip Site
- Helibase
- Division Break
- Drop Point
- Camp
- Lockout
- Water Development or Draft Site
- Resource Location
- Repeater
- Completed Dozer Line
- Completed Hand Line
- Completed Mixed Construction Line
- Completed Road as Line
- Planned Dozer Line
- Planned Secondary Line
- Access or Improved Road
- Temporary Flight Restriction
- Fire Edge
- PowerLines
- Highway
- Major Road
- Local Road
- Gravel Road, suitable for passenger car
- Aircraft Avoidance Area
- Wildlife Daily Fire Perimeter
- Department Of Defense (DOD)
- Bureau of Land Management (BLM)
- US Forest Service (USFS)
- US Fish and Wildlife (USFW)
- Bureau of Indian Affairs (BIA)
- Other Federal
- State
- Local
- Private or Unknown



Type	Label	Comments	Latitude	Longitude
Airstrip or Airport	GRY	Greybull Airport/Seat Base	44° 30.53' N	108° 04.79' W
Camp	FOB		44° 48.51' N	107° 49.17' W
Camp	Porcupine Spike		44° 49.73' N	107° 50.87' W
Dip Site	Cow Camp Dip		44° 51.04' N	107° 52.31' W
Dip Site	Good Dip		44° 57.21' N	107° 51.19' W
Dip Site	Deep Dip		44° 52.40' N	108° 11.28' W
Dip Site	Beaver Dip		44° 51.69' N	107° 51.58' W
Dip Site	125 Dip	10,000 gal pumpkin	44° 53.09' N	107° 45.00' W
Dip Site	Road Dip	10,000 gallon pumpkin	44° 58.47' N	107° 48.04' W
Dip Site	Trout Dip		44° 58.49' N	107° 55.67' W
Division Break	Div W		44° 53.78' N	107° 47.28' W
Division Break	Div D		44° 58.80' N	107° 43.80' W
Division Break	Div H		44° 58.14' N	107° 39.94' W
Division Break	Div A		44° 55.80' N	107° 50.65' W
Helibase	SHR	Sheridan Helibase	44° 46.15' N	106° 58.81' W
Helispot	H-20	Staging Area/Approved for T2/T3 aircraft	44° 55.70' N	107° 50.53' W
Helispot	H-45	Approved for T2/T3 aircraft	44° 56.68' N	107° 46.70' W
Helispot	H-40	Approved for T2/T3 aircraft	44° 56.36' N	107° 47.72' W
Helispot	H-50	Approved for T3 only. Skid Hazards/rocks	44° 57.28' N	107° 51.20' W
Helispot	H-69	Approved for both T2+T3	44° 58.55' N	107° 55.74' W
Helispot	H-500	Burgess Junction Helispot, Approved for T2/T3 aircraft	44° 47.35' N	107° 31.93' W
Helispot	H-1	Approved for T2/T3 aircraft	44° 53.93' N	107° 48.24' W
Helispot	H-250	Approved for T2/T3 aircraft	44° 56.33' N	107° 43.16' W
Helispot	H-80	8700'	44° 59.85' N	107° 54.59' W
Helispot	H-100	7900'	44° 58.70' N	107° 47.90' W
Helispot	H-120	7900'	44° 58.53' N	107° 44.89' W
Helispot	H-380	Approved T2/T3	44° 54.29' N	107° 44.63' W
Helispot	H-12	approved-TM ASGS	44° 53.81' N	107° 51.24' W
Repeater	Medicine Mountain	CMD 7	44° 49.08' N	107° 54.14' W
Repeater	CMD-5		44° 55.34' N	107° 50.96' W