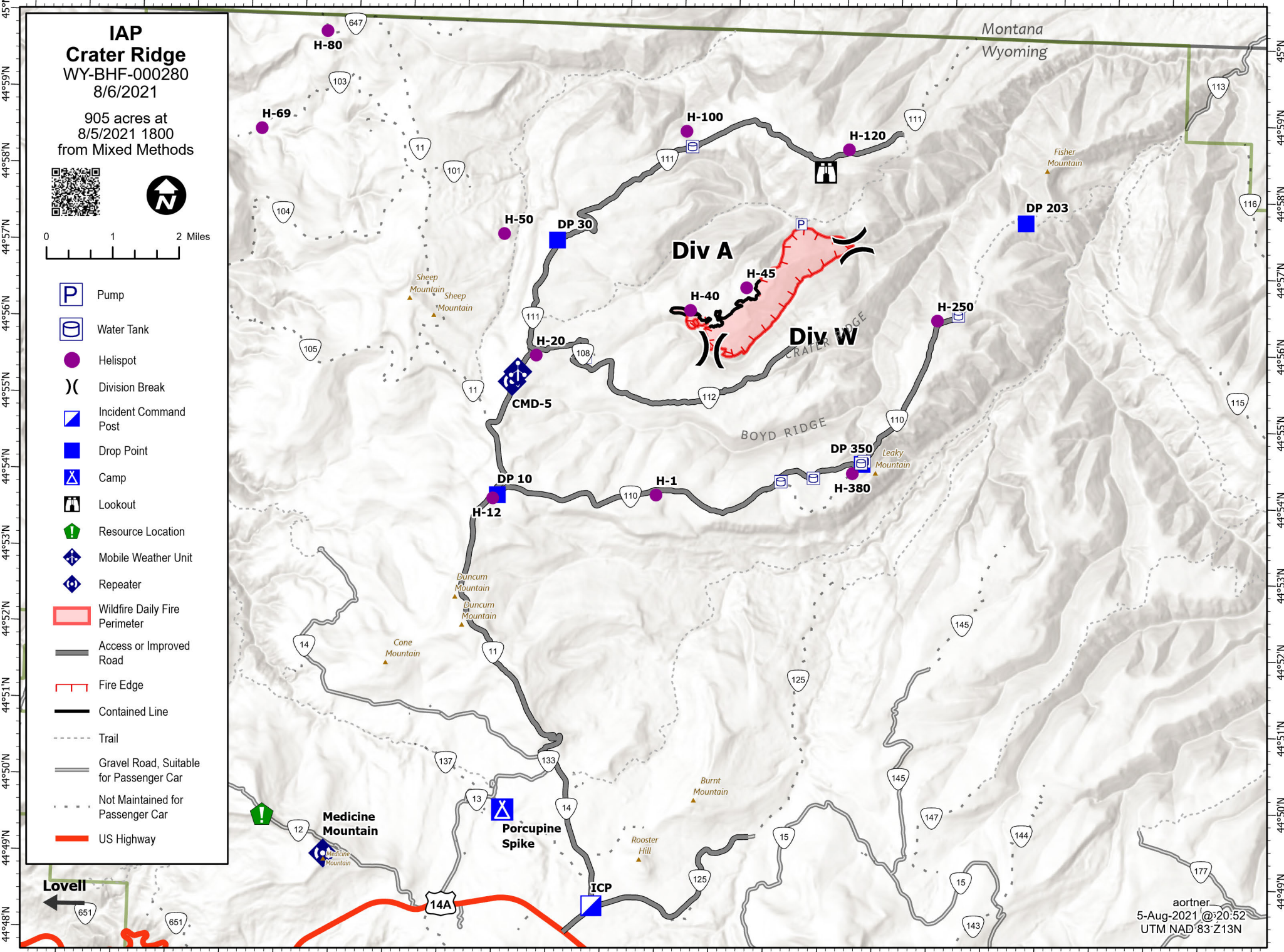
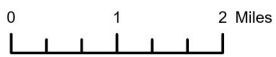


108°W 107°59'W 107°58'W 107°57'W 107°56'W 107°55'W 107°54'W 107°53'W 107°52'W 107°51'W 107°50'W 107°49'W 107°48'W 107°47'W 107°46'W 107°45'W 107°44'W 107°43'W 107°42'W 107°41'W 107°40'W 107°39'W 107°38'W



IAP Crater Ridge WY-BHF-000280 8/6/2021

905 acres at
8/5/2021 1800
from Mixed Methods



- Pump
- Water Tank
- Helispot
- Division Break
- Incident Command Post
- Drop Point
- Camp
- Lookout
- Resource Location
- Mobile Weather Unit
- Repeater
- Wildfire Daily Fire Perimeter
- Access or Improved Road
- Fire Edge
- Contained Line
- Trail
- Gravel Road, Suitable for Passenger Car
- Not Maintained for Passenger Car
- US Highway

44°59'N
44°58'N
44°57'N
44°56'N
44°55'N
44°54'N
44°53'N
44°52'N
44°51'N
44°50'N
44°49'N
44°48'N

44°59'N
44°58'N
44°57'N
44°56'N
44°55'N
44°54'N
44°53'N
44°52'N
44°51'N
44°50'N
44°49'N
44°48'N

107°59'W 107°58'W 107°57'W 107°56'W 107°55'W 107°54'W 107°53'W 107°52'W 107°51'W 107°50'W 107°49'W 107°48'W 107°47'W 107°46'W 107°45'W 107°44'W 107°43'W 107°42'W 107°41'W 107°40'W 107°39'W 107°38'W

aortner
5-Aug-2021 @20:52
UTM NAD 83 Z13N