

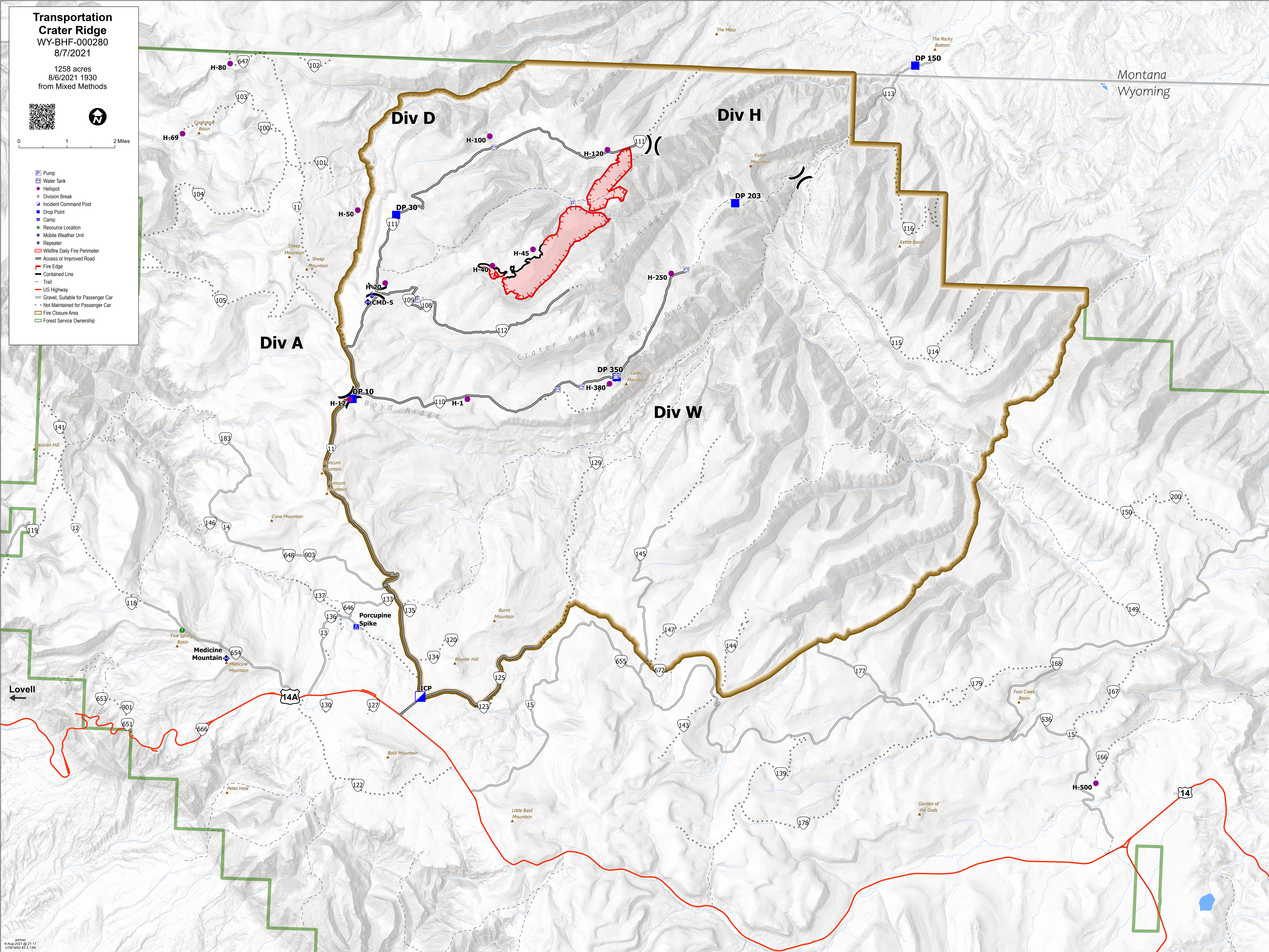
**Transportation
Crater Ridge**
WY-BHF-000280
8/7/2021

1258 acres
8/6/2021 1930
from Mixed Methods



0 1 2 Miles

- Pump
- Water Tank
- Helispot
- Division Break
- Incident Command Post
- Drop Point
- Camp
- Resource Location
- Mobile Weather Unit
- Repeater
- Wildfire Daily Fire Perimeter
- Access or Improved Road
- Fire Edge
- Contained Line
- Trail
- US Highway
- Gravel, Suitable for Passenger Car
- Not Maintained for Passenger Car
- Fire Closure Area
- Forest Service Ownership



Montana
Wyoming

Lovell ←