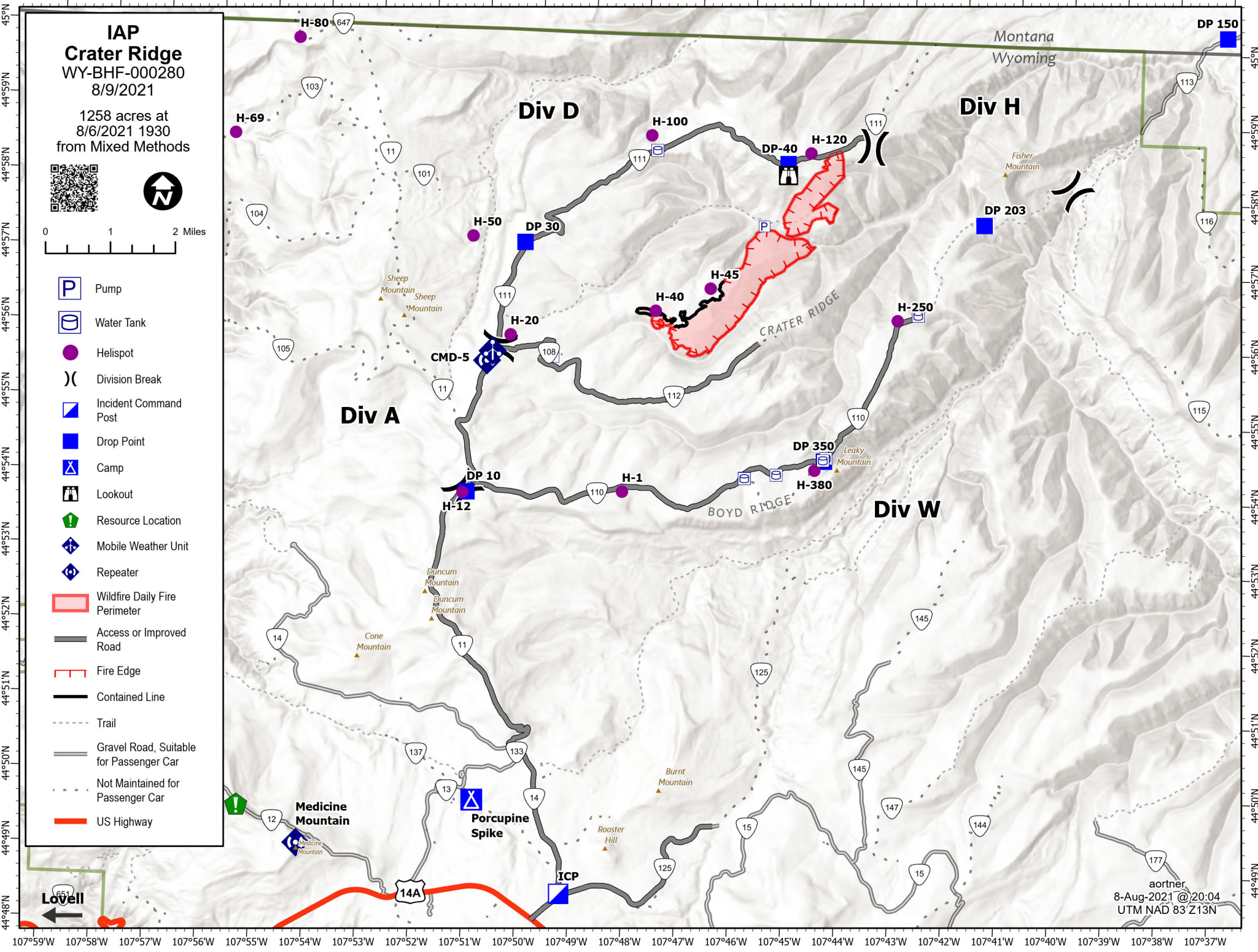
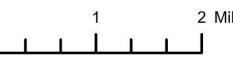


107°59'W 107°58'W 107°57'W 107°56'W 107°55'W 107°54'W 107°53'W 107°52'W 107°51'W 107°50'W 107°49'W 107°48'W 107°47'W 107°46'W 107°45'W 107°44'W 107°43'W 107°42'W 107°41'W 107°40'W 107°39'W 107°38'W 107°37'W



IAP
Crater Ridge
WY-BHF-000280
8/9/2021

1258 acres at
8/6/2021 1930
from Mixed Methods



-  Pump
-  Water Tank
-  Helispot
-  Division Break
-  Incident Command Post
-  Drop Point
-  Camp
-  Lookout
-  Resource Location
-  Mobile Weather Unit
-  Repeater
-  Wildfire Daily Fire Perimeter
-  Access or Improved Road
-  Fire Edge
-  Contained Line
-  Trail
-  Gravel Road, Suitable for Passenger Car
-  Not Maintained for Passenger Car
-  US Highway

aortner
8-Aug-2021 @ 20:04
UTM NAD 83 Z13N