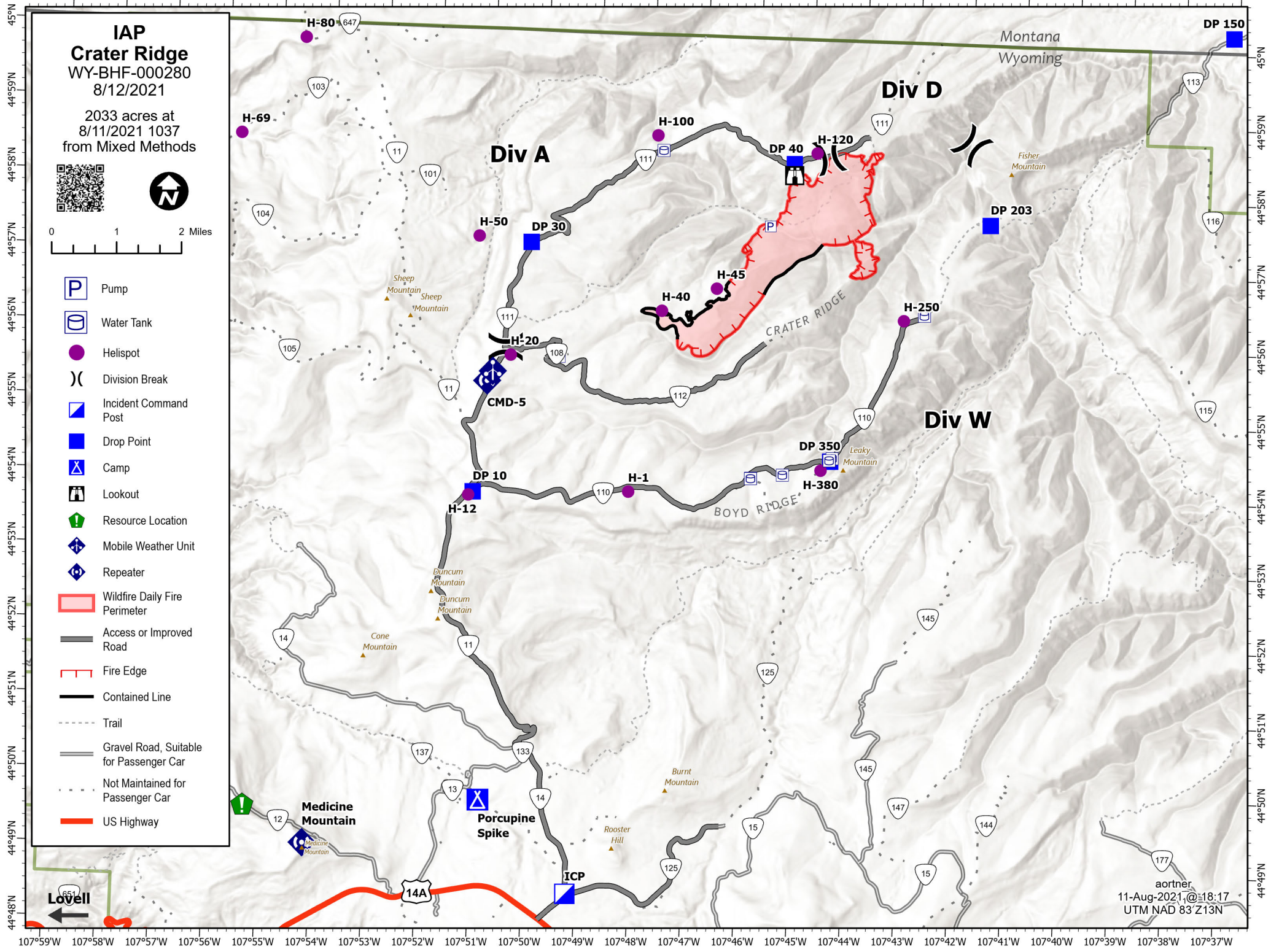
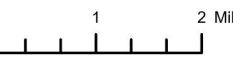


107°59'W 107°58'W 107°57'W 107°56'W 107°55'W 107°54'W 107°53'W 107°52'W 107°51'W 107°50'W 107°49'W 107°48'W 107°47'W 107°46'W 107°45'W 107°44'W 107°43'W 107°42'W 107°41'W 107°40'W 107°39'W 107°38'W 107°37'W



**IAP**  
**Crater Ridge**  
WY-BHF-000280  
8/12/2021

2033 acres at  
8/11/2021 1037  
from Mixed Methods



- Pump
- Water Tank
- Helispot
- Division Break
- Incident Command Post
- Drop Point
- Camp
- Lookout
- Resource Location
- Mobile Weather Unit
- Repeater
- Wildfire Daily Fire Perimeter
- Access or Improved Road
- Fire Edge
- Contained Line
- Trail
- Gravel Road, Suitable for Passenger Car
- Not Maintained for Passenger Car
- US Highway

**Div A**

**Div D**

**Div W**

CRATER RIDGE

BOYD RIDGE

Medicine Mountain

Porcupine Spike

Sheep Mountain  
Sheep Mountain

Fisher Mountain

Leaky Mountain

Duncum Mountain  
Duncum Mountain

Cone Mountain

Rooster Hill

Burnt Mountain

← Lovell

aorner  
11-Aug-2021, @ 18:17  
UTM NAD 83 Z13N