

Planning Crater Ridge WY-BHF-000280 8/14/2021

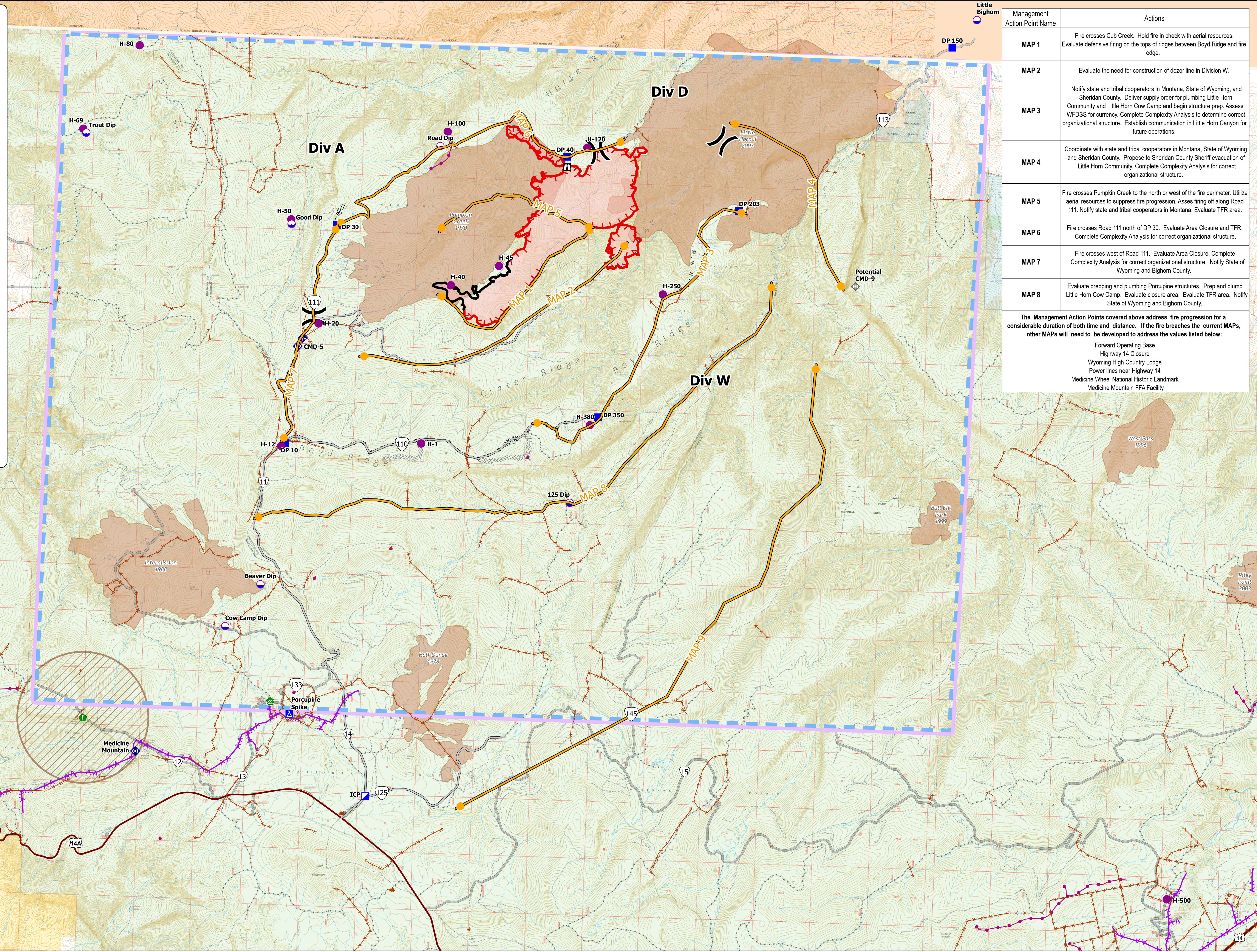
2427 acres
8/13/2021 1259
from Mixed Methods

Not for Public Distribution



0 1 2 Miles

- Dip Site
- Helispot
- Division Break
- Incident Command Post
- Drop Point
- Camp
- Lookout
- Water Development or Draft Site
- Resource Location
- Mobile Weather Unit
- Repeater
- Potential Repeater
- Management Action Point
- Completed Dozer Line
- Completed Hand Line
- Completed Mixed Construction Line
- Completed Road as Line
- Planned Dozer Line
- Planned Secondary Line
- Access or Improved Road
- Temporary Flight Restriction
- Fire Edge
- Contained Line
- Fences
- PowerLines
- Pipelines
- US Highway
- Improved Road
- Not Maintained for Passenger Car
- Unknown Condition Road
- Closed or Decommissioned Roads
- Aircraft Avoidance Area
- Wildfire Daily Fire Perimeter
- Fire History
- Bureau of Land Management (BLM)
- US Forest Service (USFS)
- US Fish and Wildlife (USFW)
- Bureau of Indian Affairs (BIA)
- State
- Private or Unknown
- Bureau of Land Management (BLM)
- US Forest Service (USFS)
- US Fish and Wildlife (USFW)
- Bureau of Indian Affairs (BIA)
- State
- Private or Unknown



Management Action Point Name	Actions
MAP 1	Fire crosses Cub Creek. Hold fire in check with aerial resources. Evaluate defensive firing on the tops of ridges between Boyd Ridge and fire edge.
MAP 2	Evaluate the need for construction of dozer line in Division W.
MAP 3	Notify state and tribal cooperators in Montana, State of Wyoming, and Sheridan County. Deliver supply order for plumbing Little Horn Community and Little Horn Cow Camp and begin structure prep. Assess WFSS for currency. Complete Complexity Analysis to determine correct organizational structure. Establish communication in Little Horn Canyon for future operations.
MAP 4	Coordinate with state and tribal cooperators in Montana, State of Wyoming, and Sheridan County. Propose to Sheridan County Sheriff evacuation of Little Horn Community. Complete Complexity Analysis for correct organizational structure.
MAP 5	Fire crosses Pumpkin Creek to the north or west of the fire perimeter. Utilize aerial resources to suppress fire progression. Assess firing off along Road 111. Notify state and tribal cooperators in Montana. Evaluate TFR area.
MAP 6	Fire crosses Road 111 north of DP 30. Evaluate Area Closure and TFR. Complete Complexity Analysis for correct organizational structure.
MAP 7	Fire crosses west of Road 111. Evaluate Area Closure. Complete Complexity Analysis for correct organizational structure. Notify State of Wyoming and Bighorn County.
MAP 8	Evaluate prepping and plumbing Porcupine structures. Prep and plumb Little Horn Cow Camp. Evaluate closure area. Evaluate TFR area. Notify State of Wyoming and Bighorn County.

The Management Action Points covered above address fire progression for a considerable duration of both time and distance. If the fire breaches the current MAPs, other MAPs will need to be developed to address the values listed below:

- Forward Operating Base
- Highway 14 Closure
- Wyoming High Country Lodge
- Power lines near Highway 14
- Medicine Wheel National Historic Landmark
- Medicine Mountain FFA Facility