

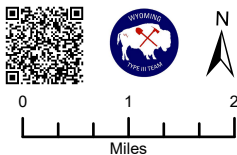
107°59'W 107°58'W 107°57'W 107°56'W 107°55'W 107°54'W 107°53'W 107°52'W 107°51'W 107°50'W 107°49'W 107°48'W 107°47'W 107°46'W 107°45'W 107°44'W 107°43'W 107°42'W 107°41'W 107°40'W 107°39'W 107°38'W 107°37'W

44°59'N  
44°58'N  
44°57'N  
44°56'N  
44°55'N  
44°54'N  
44°53'N  
44°52'N  
44°51'N  
44°50'N  
44°49'N

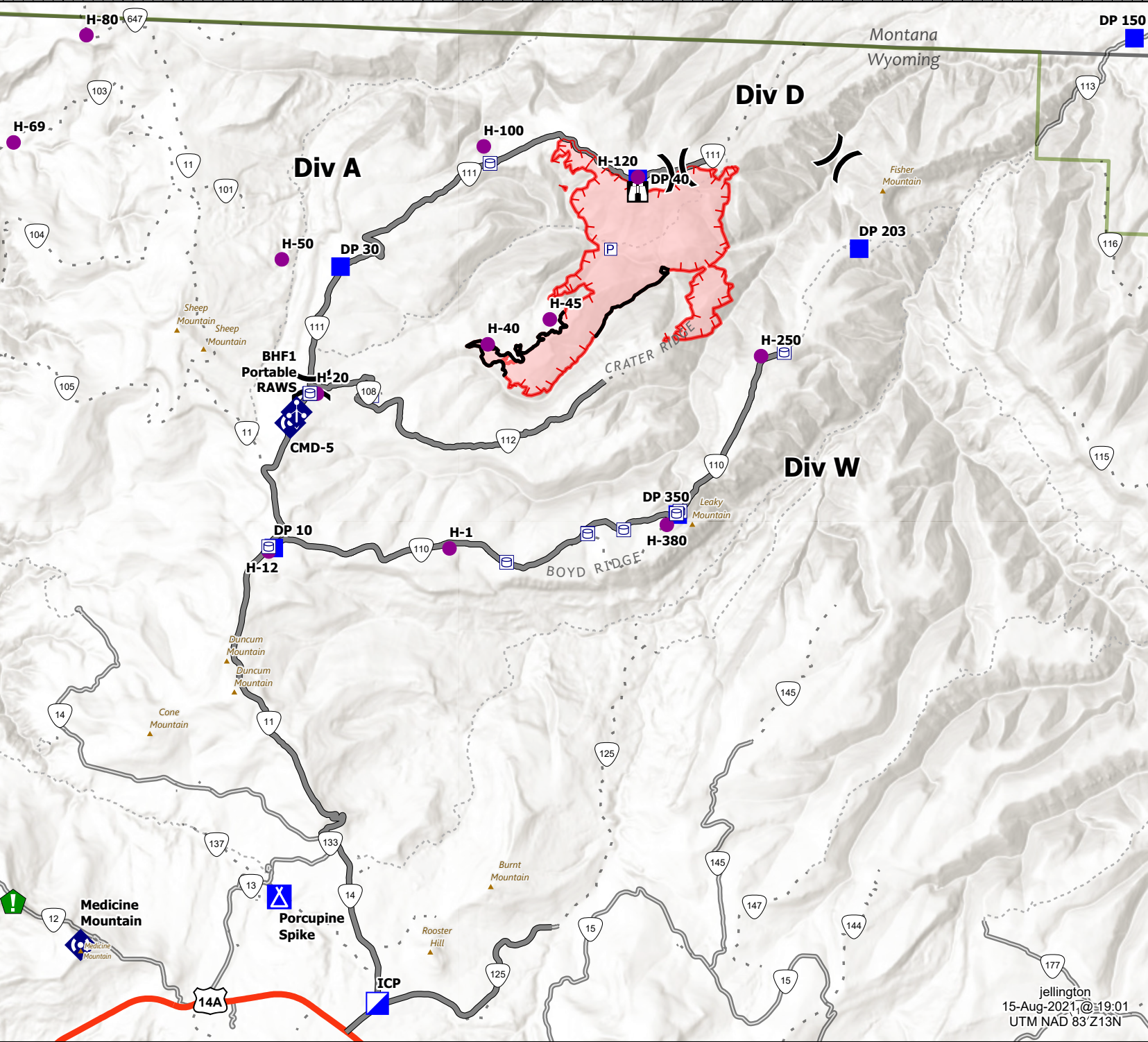
45°N  
44°59'N  
44°58'N  
44°57'N  
44°56'N  
44°55'N  
44°54'N  
44°53'N  
44°52'N  
44°51'N  
44°50'N  
44°49'N

# IAP Crater Ridge WY-BHF-000280 8/16/2021

2785 acres at  
8/15/2021 @ 1229  
from MMA Flight



- Pump
- Water Tank
- Helispot
- Division Break
- Incident Command Post
- Drop Point
- Camp
- Lookout
- Resource Location
- Mobile Weather Unit
- Repeater
- Wildfire Daily Fire Perimeter
- Access or Improved Road
- Fire Edge
- Contained Line
- Trail
- Gravel Road, Suitable for Passenger Car
- Not Maintained for Passenger Car
- US Highway



jellington  
15-Aug-2021, @ 19:01  
UTM NAD 83 Z 13N