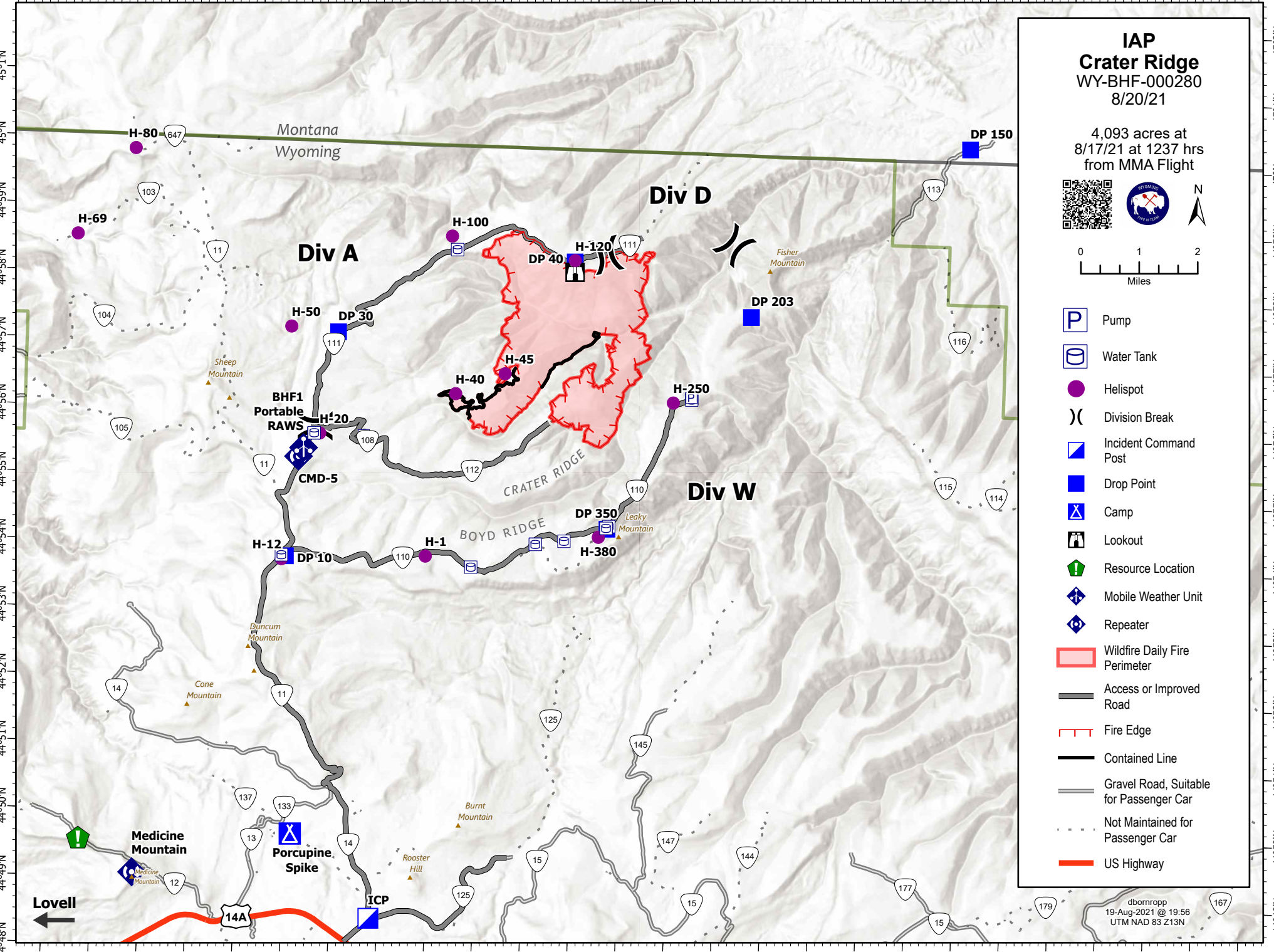


107°57'W 107°56'W 107°55'W 107°54'W 107°53'W 107°52'W 107°51'W 107°50'W 107°49'W 107°48'W 107°47'W 107°46'W 107°45'W 107°44'W 107°43'W 107°42'W 107°41'W 107°40'W 107°39'W 107°38'W 107°37'W 107°36'W 107°35'W 107°34'W 107°33'W 107°32'W



IAP Crater Ridge WY-BHF-000280 8/20/21

4,093 acres at
8/17/21 at 1237 hrs
from MMA Flight



- Pump
- Water Tank
- Helispot
- Division Break
- Incident Command Post
- Drop Point
- Camp
- Lookout
- Resource Location
- Mobile Weather Unit
- Repeater
- Wildfire Daily Fire Perimeter
- Access or Improved Road
- Fire Edge
- Contained Line
- Gravel Road, Suitable for Passenger Car
- Not Maintained for Passenger Car
- US Highway

dbornropp
19-Aug-2021 @ 19:56
UTM NAD 83 Z13N

107°56'W 107°55'W 107°54'W 107°53'W 107°52'W 107°51'W 107°50'W 107°49'W 107°48'W 107°47'W 107°46'W 107°45'W 107°44'W 107°43'W 107°42'W 107°41'W 107°40'W 107°39'W 107°38'W 107°37'W 107°36'W 107°35'W 107°34'W 107°33'W 107°32'W