

Air Operations Crater Ridge WY-BHF-000280

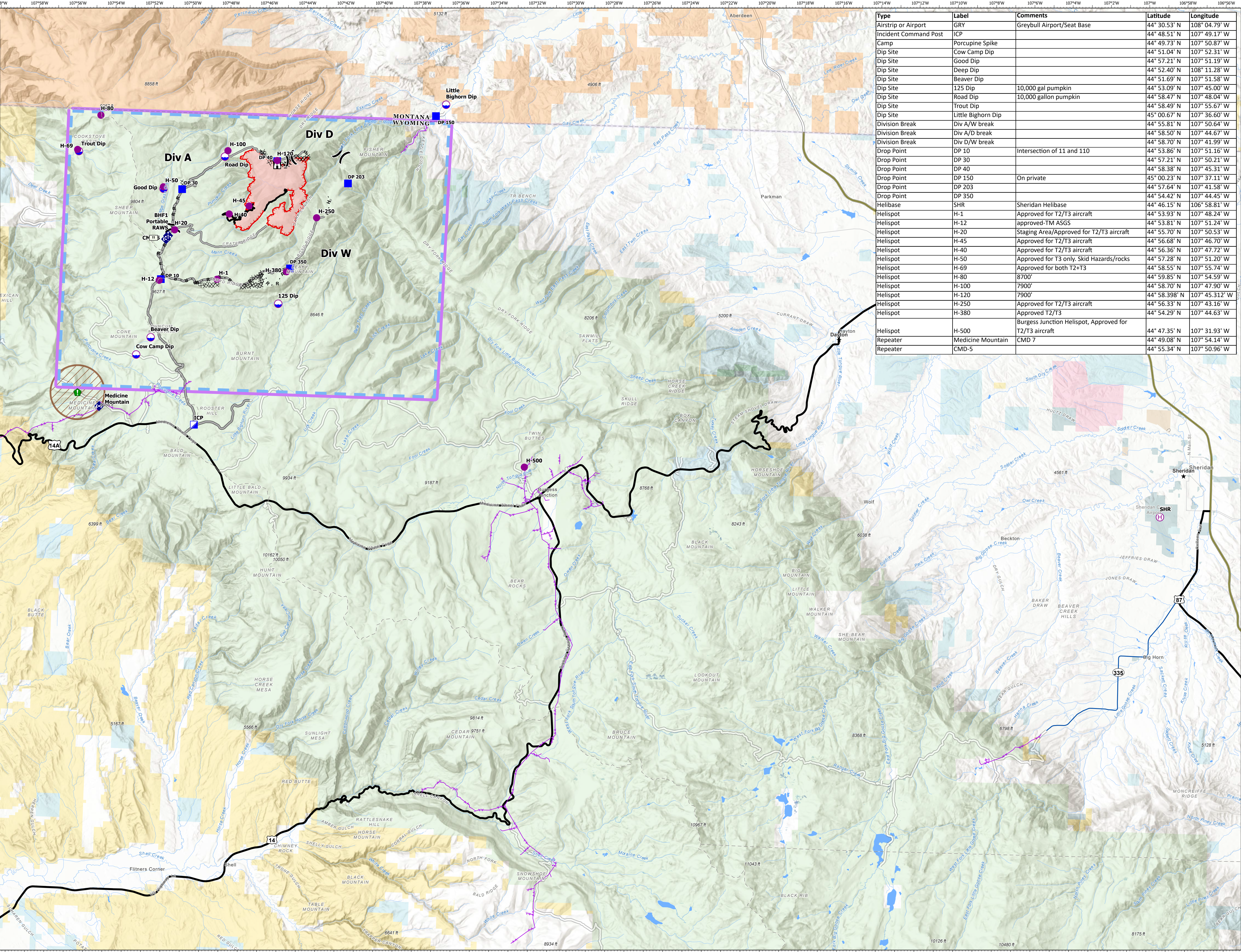
8/20/21

4,093 acres
8/17/21 at 1237 hrs
from MMA Flight



0 2 4
Miles

- Airstrip or Airport
- Dip Site
- Helispot
- Helibase
- Division Break
- Incident Command Post
- Lookout
- Resource Location
- Mobile Weather Unit
- Repeater
- Completed Dozer Line
- Completed Fuel Break
- Completed Hand Line
- Completed Hand Construction Line
- Completed Road as Line
- Planned Dozer Line
- Planned Secondary Line
- Access or Improved Road
- Temporary Flight Restriction
- Fire Edge
- Contained Line
- Power Lines
- Interstate
- US Highway
- State Highway
- Gravel Road, suitable for passenger car
- Aircraft Avoidance Area
- Wildfire Daily Fire Perimeter
- Department of Defense (DOD)
- Bureau of Land Management (BLM)
- National Park Service (NPS)
- US Forest Service (USFS)
- US Fish and Wildlife (USFW)
- Bureau of Reclamation (BOR)
- Bureau of Indian Affairs (BIA)
- Other Federal
- State
- Local
- Private or Unknown



| Type | Label | Comments | Latitude | Longitude |
|-----------------------|--------------------|--|---------------|----------------|
| Airstrip or Airport | GRY | Greybull Airport/Seat Base | 44° 30.53' N | 108° 04.79' W |
| Incident Command Post | ICP | | 44° 48.51' N | 107° 49.17' W |
| Camp | Porcupine Spike | | 44° 49.73' N | 107° 50.87' W |
| Dip Site | Cow Camp Dip | | 44° 51.04' N | 107° 52.31' W |
| Dip Site | Good Dip | | 44° 57.21' N | 107° 51.19' W |
| Dip Site | Deep Dip | | 44° 52.40' N | 108° 11.28' W |
| Dip Site | Beaver Dip | | 44° 51.69' N | 107° 51.58' W |
| Dip Site | 125 Dip | 10,000 gal pumpkin | 44° 53.09' N | 107° 45.00' W |
| Dip Site | Road Dip | 10,000 gallon pumpkin | 44° 58.47' N | 107° 48.04' W |
| Dip Site | Trout Dip | | 44° 58.49' N | 107° 55.67' W |
| Dip Site | Little Bighorn Dip | | 45° 00.67' N | 107° 36.60' W |
| Division Break | Div A/W break | | 44° 55.81' N | 107° 50.64' W |
| Division Break | Div A/D break | | 44° 58.50' N | 107° 44.67' W |
| Division Break | Div D/W break | | 44° 58.70' N | 107° 41.99' W |
| Drop Point | DP 10 | Intersection of 11 and 110 | 44° 53.86' N | 107° 51.16' W |
| Drop Point | DP 30 | | 44° 57.21' N | 107° 50.21' W |
| Drop Point | DP 40 | | 44° 58.38' N | 107° 45.31' W |
| Drop Point | DP 150 | On private | 45° 00.23' N | 107° 37.11' W |
| Drop Point | DP 203 | | 44° 57.64' N | 107° 41.58' W |
| Drop Point | DP 350 | | 44° 54.42' N | 107° 44.45' W |
| Helibase | SHR | Sheridan Helibase | 44° 46.15' N | 106° 58.81' W |
| Helispot | H-1 | Approved for T2/T3 aircraft | 44° 53.93' N | 107° 48.24' W |
| Helispot | H-12 | approved-TM ASGS | 44° 53.81' N | 107° 51.24' W |
| Helispot | H-20 | Staging Area/Approved for T2/T3 aircraft | 44° 55.70' N | 107° 50.53' W |
| Helispot | H-45 | Approved for T2/T3 aircraft | 44° 56.68' N | 107° 46.70' W |
| Helispot | H-40 | Approved for T2/T3 aircraft | 44° 56.36' N | 107° 47.72' W |
| Helispot | H-50 | Approved for T3 only; Skid Hazards/rocks | 44° 57.28' N | 107° 51.20' W |
| Helispot | H-69 | Approved for both T2+T3 | 44° 58.55' N | 107° 55.74' W |
| Helispot | H-80 | 7900' | 44° 59.85' N | 107° 54.59' W |
| Helispot | H-100 | 7900' | 44° 58.70' N | 107° 47.90' W |
| Helispot | H-120 | 7900' | 44° 58.398' N | 107° 45.312' W |
| Helispot | H-250 | Approved for T2/T3 aircraft | 44° 56.33' N | 107° 43.16' W |
| Helispot | H-380 | Approved T2/T3 | 44° 54.29' N | 107° 44.63' W |
| Helispot | H-500 | Burgess Junction Helispot, Approved for T2/T3 aircraft | 44° 47.35' N | 107° 31.93' W |
| Repeater | Medicine Mountain | CMD 7 | 44° 49.08' N | 107° 54.14' W |
| Repeater | CMD-5 | | 44° 55.34' N | 107° 50.96' W |