

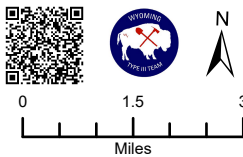
108°6'W 108°4'W 108°2'W 108°W 107°58'W 107°56'W 107°54'W 107°52'W 107°50'W 107°48'W 107°46'W 107°44'W 107°42'W 107°40'W 107°38'W 107°36'W 107°34'W

45°2'N 45°N 44°58'N 44°56'N 44°54'N 44°52'N 44°50'N 44°48'N

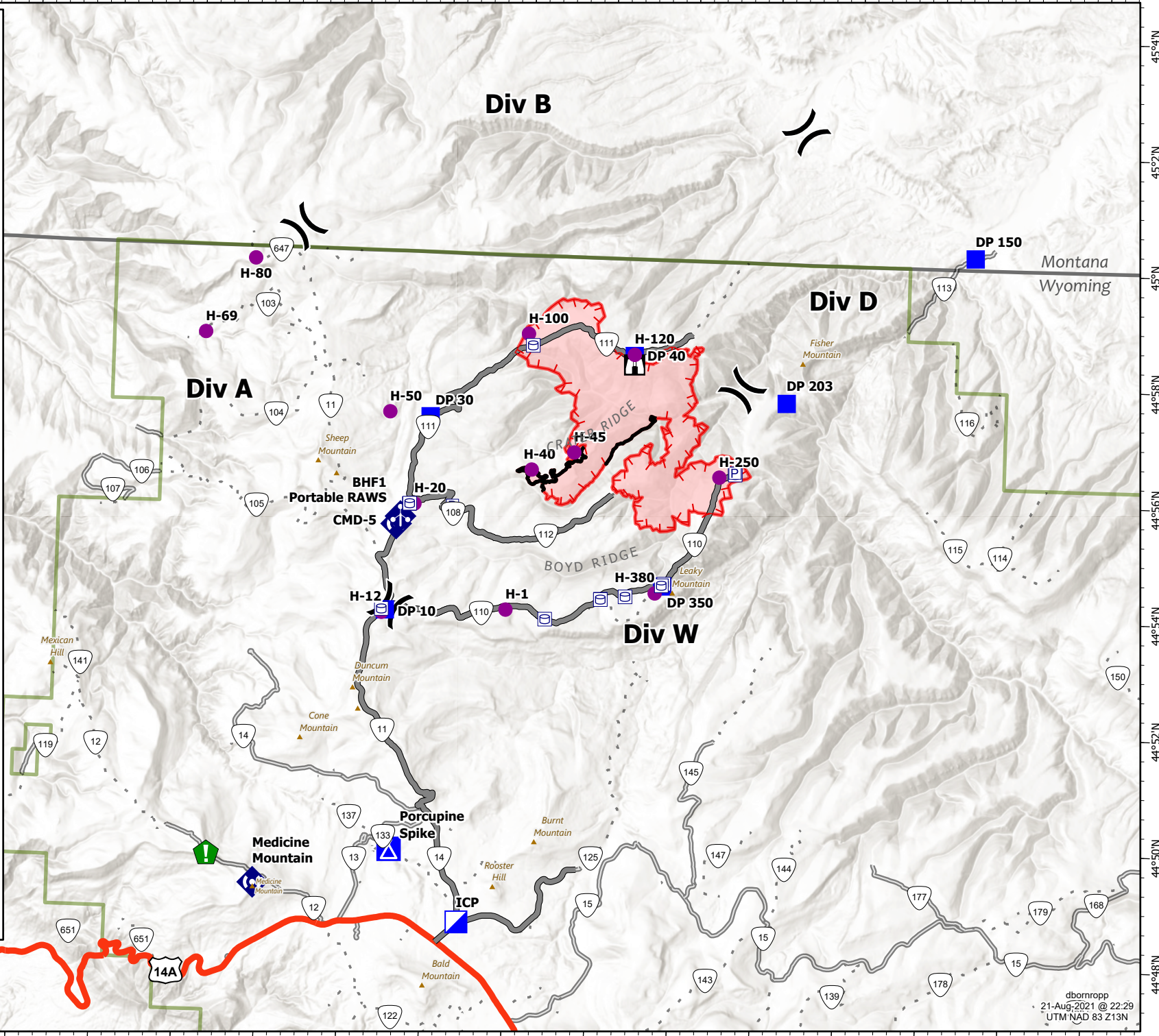
45°4'N 45°2'N 45°N 44°58'N 44°56'N 44°54'N 44°52'N 44°50'N 44°48'N

IAP Crater Ridge WY-BHF-000280 8/22/21

6,123 acres at
8/21/21 at 0929 hrs
from MMA Flight



- Pump
- Water Tank
- Helispot
- Division Break
- Incident Command Post
- Drop Point
- Camp
- Lookout
- Resource Location
- Mobile Weather Unit
- Repeater
- Wildfire Daily Fire Perimeter
- Access or Improved Road
- Fire Edge
- Contained Line
- Gravel Road, Suitable for Passenger Car
- Not Maintained for Passenger Car
- US Highway



← Lovell

dbornropp
21-Aug-2021 @ 22:29
UTM NAD 83 Z13N

108°4'W 108°2'W 108°W 107°58'W 107°56'W 107°54'W 107°52'W 107°50'W 107°48'W 107°46'W 107°44'W 107°42'W 107°40'W 107°38'W 107°36'W 107°34'W