

# Air Operations Crater Ridge WY-BHF-000280

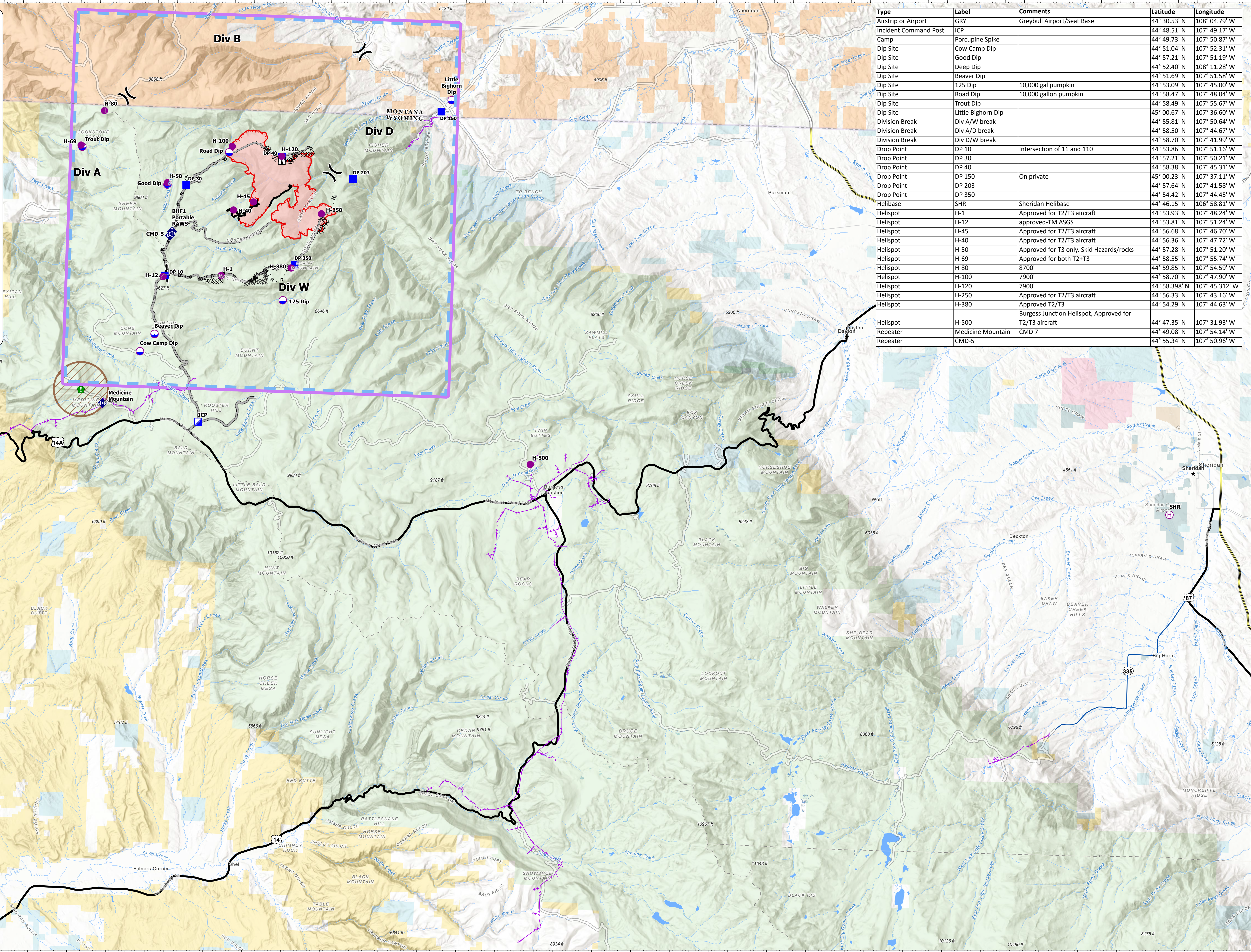
8/23/21

6,123 acres  
8/21/21 at 0929 hrs  
from MMA Flight



0 2 4  
Miles

- |   |  |
|---|--|
| <ul style="list-style-type: none"> <li> Airstrip or Airport</li> <li> Dip Site</li> <li> Helispot</li> <li> Helibase</li> <li> Division Break</li> <li> Incident Command Post</li> <li> Drop Point</li> <li> Lookout</li> <li> Resource Location</li> <li> Mobile Weather Unit</li> <li> Repeater</li> <li> Completed Dozer Line</li> <li> Completed Fuel Break</li> <li> Completed Hand Line</li> <li> Completed Road Construction Line</li> <li> Planned Dozer Line</li> <li> Planned Secondary Line</li> <li> Access or Improved Road</li> <li> Fire Edge</li> </ul> | <ul style="list-style-type: none"> <li> Contained Line</li> <li> Temporary Flight Restriction</li> <li> PowerLines</li> <li> Interstate</li> <li> US Highway</li> <li> State Highway</li> <li> Gravel Road, suitable for passenger car</li> <li> Aircraft Avoidance Area</li> <li> Wildfire Daily Fire Perimeter</li> <li> Department of Defense (DOD)</li> <li> Bureau of Land Management (BLM)</li> <li> National Park Service (NPS)</li> <li> US Forest Service (USFS)</li> <li> US Fish and Wildlife (USFW)</li> <li> Bureau of Reclamation (BOR)</li> <li> Bureau of Indian Affairs (BIA)</li> <li> Other Federal</li> <li> State</li> <li> Local</li> <li> Private or Unknown</li> </ul> |
|---|--|



Type	Label	Comments	Latitude	Longitude
Airstrip or Airport	GRY	Greybull Airport/Seat Base	44° 30.53' N	108° 04.79' W
Incident Command Post	ICP		44° 48.51' N	107° 49.17' W
Camp	Porcupine Spike		44° 49.73' N	107° 50.87' W
Dip Site	Cow Camp Dip		44° 51.04' N	107° 52.31' W
Dip Site	Good Dip		44° 57.21' N	107° 51.19' W
Dip Site	Deep Dip		44° 52.40' N	108° 11.28' W
Dip Site	Beaver Dip		44° 51.69' N	107° 51.58' W
Dip Site	125 Dip	10,000 gal pumpkin	44° 53.09' N	107° 45.00' W
Dip Site	Road Dip	10,000 gallon pumpkin	44° 58.47' N	107° 48.04' W
Dip Site	Trout Dip		44° 58.49' N	107° 55.67' W
Dip Site	Little Bighorn Dip		45° 00.67' N	107° 36.60' W
Division Break	Div A/W break		44° 55.81' N	107° 50.64' W
Division Break	Div A/D break		44° 58.50' N	107° 44.67' W
Division Break	Div D/W break		44° 58.70' N	107° 41.99' W
Drop Point	DP 10	Intersection of 11 and 110	44° 53.86' N	107° 51.16' W
Drop Point	DP 30		44° 57.21' N	107° 50.21' W
Drop Point	DP 40		44° 58.38' N	107° 45.31' W
Drop Point	DP 150	On private	45° 00.23' N	107° 37.11' W
Drop Point	DP 203		44° 57.64' N	107° 41.58' W
Drop Point	DP 350		44° 54.42' N	107° 44.45' W
Helibase	SHR	Sheridan Helibase	44° 46.15' N	106° 58.81' W
Helispot	H-1	Approved for T2/T3 aircraft	44° 53.93' N	107° 48.24' W
Helispot	H-12	approved-TM ASGS	44° 53.81' N	107° 51.24' W
Helispot	H-45	Approved for T2/T3 aircraft	44° 56.68' N	107° 46.70' W
Helispot	H-40	Approved for T2/T3 aircraft	44° 56.36' N	107° 47.72' W
Helispot	H-50	Approved for T3 only. Skid Hazards/rocks	44° 57.28' N	107° 51.20' W
Helispot	H-69	Approved for both T2+T3	44° 58.55' N	107° 55.74' W
Helispot	H-80	8700'	44° 59.85' N	107° 54.59' W
Helispot	H-100	7900'	44° 58.70' N	107° 47.90' W
Helispot	H-120	7900'	44° 58.398' N	107° 45.312' W
Helispot	H-250	Approved for T2/T3 aircraft	44° 56.33' N	107° 43.16' W
Helispot	H-380	Approved T2/T3	44° 54.29' N	107° 44.63' W
Helispot	H-500	Burgess Junction Helispot, Approved for T2/T3 aircraft	44° 47.35' N	107° 31.93' W
Repeater	Medicine Mountain	CMD 7	44° 49.08' N	107° 54.14' W
Repeater	CMD-5		44° 55.34' N	107° 50.96' W