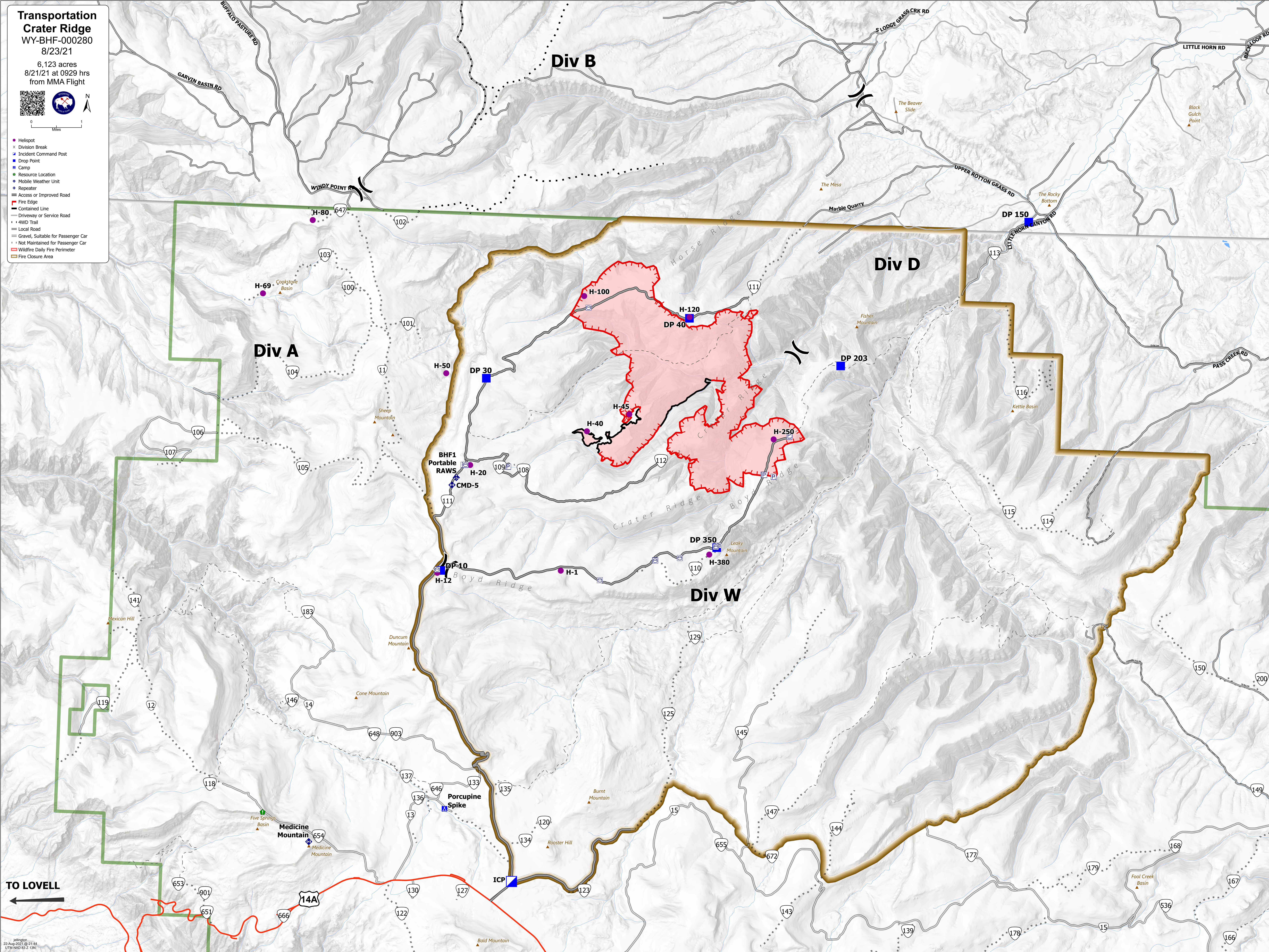


**Transportation
Crater Ridge**
WY-BHF-000280
8/23/21
6,123 acres
8/21/21 at 0929 hrs
from MMA Flight



- Helispot
- ▼ Division Break
- Incident Command Post
- Drop Point
- Camp
- Resource Location
- ◆ Mobile Weather Unit
- ◆ Repeater
- ▬ Access or Improved Road
- ▬ Fire Edge
- ▬ Contained Line
- ▬ Driveway or Service Road
- ▬ 4WD Trail
- ▬ Local Road
- ▬ Gravel, Suitable for Passenger Car
- ▬ Not Maintained for Passenger Car
- ▬ Wildfire Daily Fire Perimeter
- ▬ Fire Closure Area



TO LOVELL

