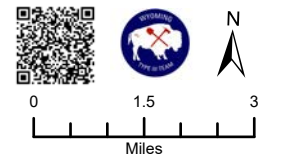


108°4'W 108°2'W 108°W 107°58'W 107°56'W 107°54'W 107°52'W 107°50'W 107°48'W 107°46'W 107°44'W 107°42'W 107°40'W 107°38'W 107°36'W 107°34'W 107°32'W

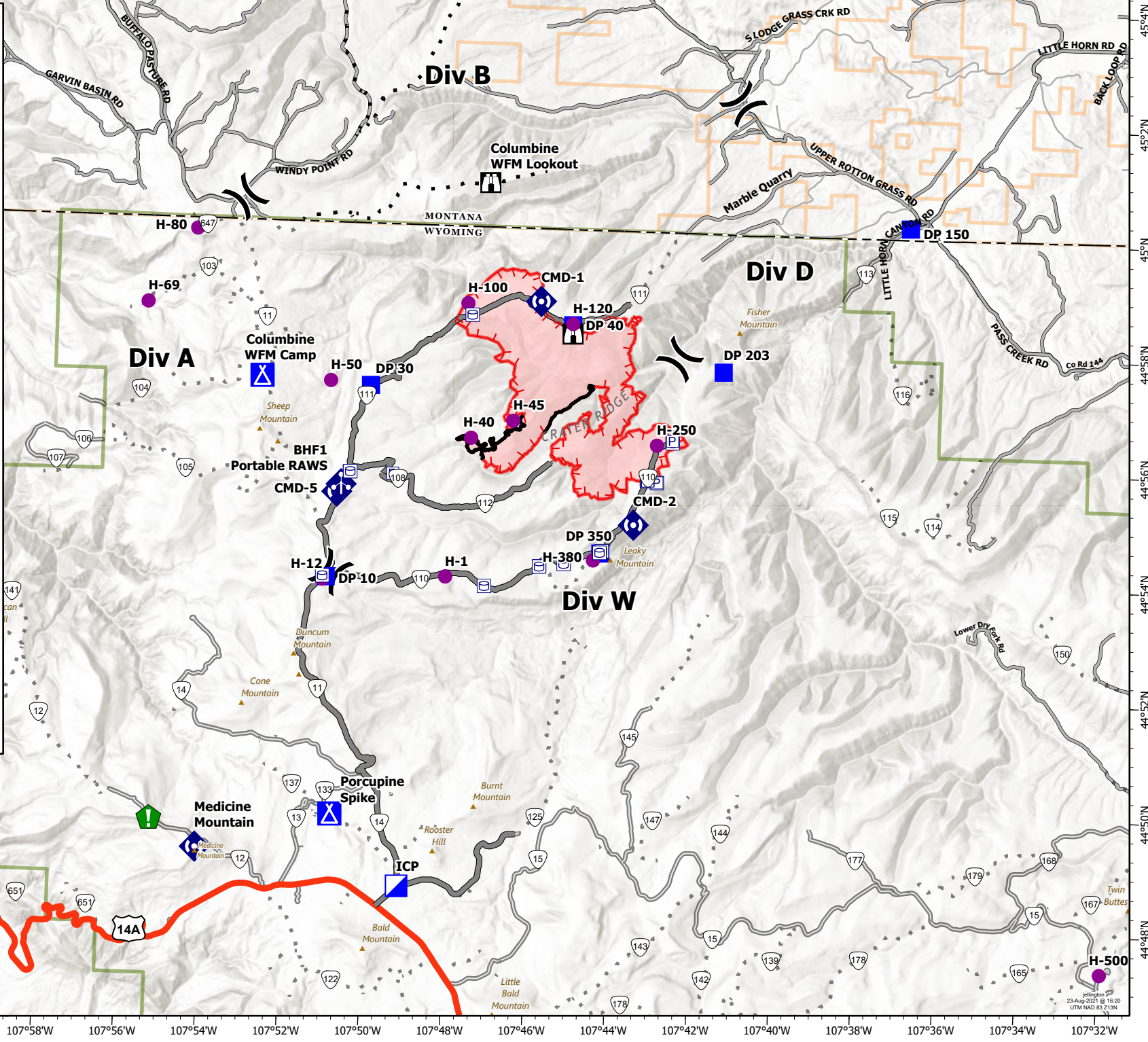
45°2'N
45°N
44°58'N
44°56'N
44°54'N
44°52'N
44°50'N
44°48'N
44°46'N

IAP Crater Ridge WY-BHF-000280 8/24/2021

6,123 acres at
8/21/21 at 0929 hrs
from MMA Flight



- Pump
- Water Tank
- Helispot
- Division Break
- Incident Command Post
- Drop Point
- Camp
- Lookout
- Resource Location
- Mobile Weather Unit
- Repeater
- Access or Improved Road
- Fire Edge
- Contained Line
- Wildfire Daily Fire Perimeter
- Driveway or Service Road
- 4WD Trail
- Local Road
- US Highway
- Gravel Road, Suitable for Passenger Car
- Not Maintained for Passenger Car
- Forest Service Ownership
- BIA Ownership



← Lovell