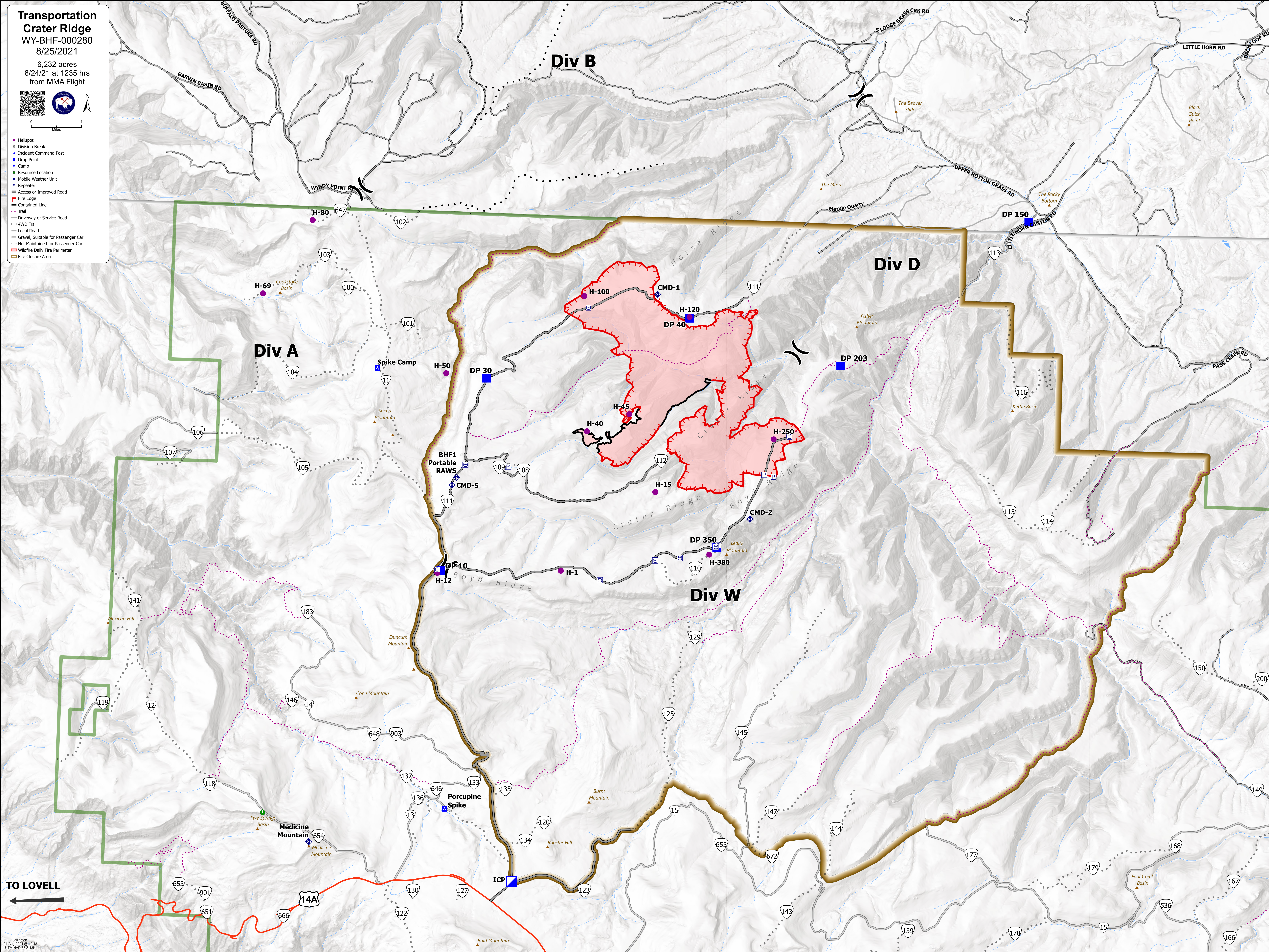


**Transportation
Crater Ridge**
WY-BHF-000280
8/25/2021

6,232 acres
8/24/21 at 1235 hrs
from MMA Flight



- Helispot
- × Division Break
- Incident Command Post
- Drop Point
- Camp
- Resource Location
- ◆ Mobile Weather Unit
- ◆ Repeater
- ▬ Access or Improved Road
- ▬ Fire Edge
- ▬ Contained Line
- ▬ Trail
- ▬ Driveway or Service Road
- ▬ 4WD Trail
- ▬ Local Road
- ▬ Gravel, Suitable for Passenger Car
- ▬ Not Maintained for Passenger Car
- ▬ Wildfire Daily Fire Perimeter
- ▬ Fire Closure Area



TO LOVELL
←