

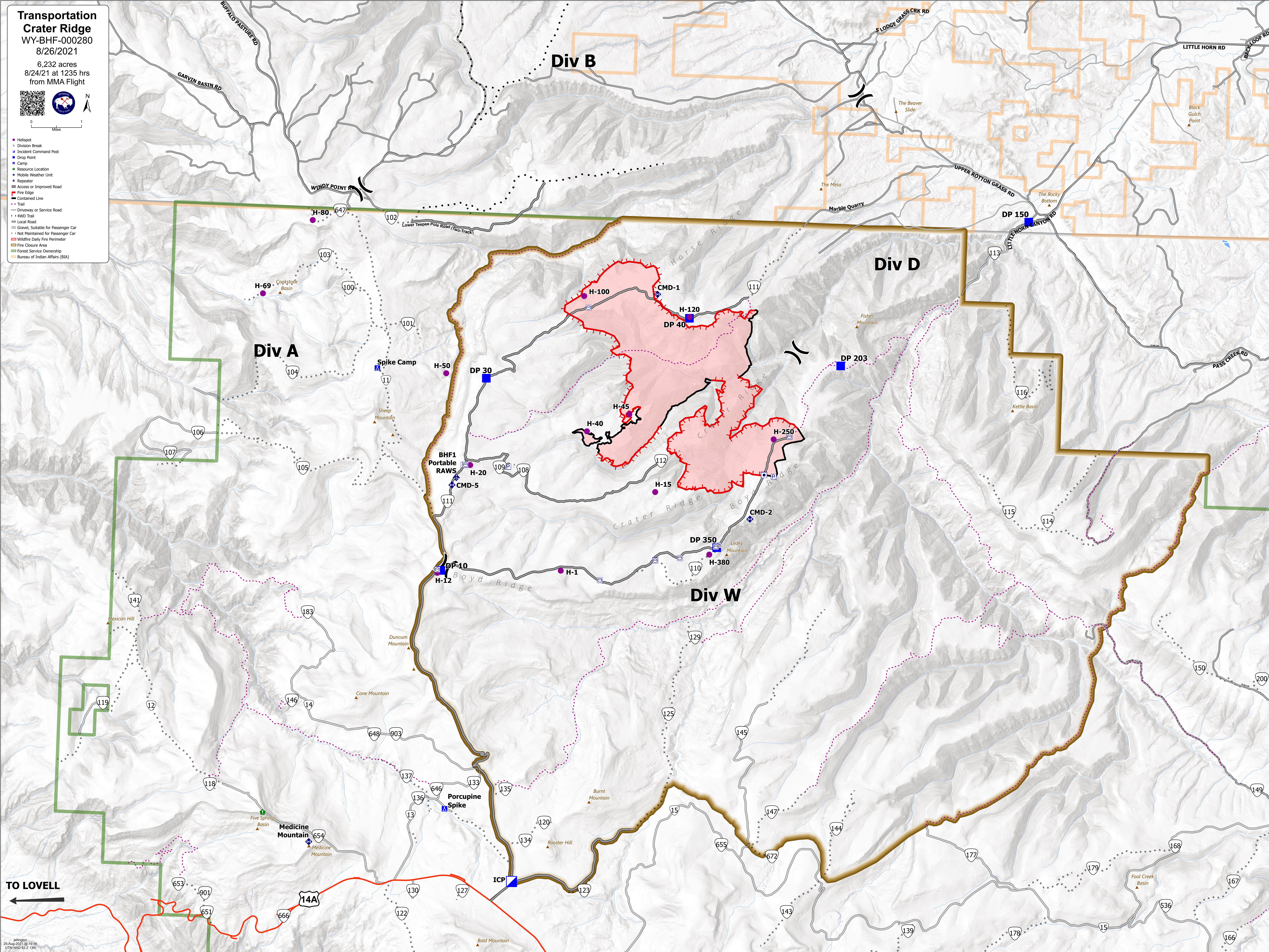
**Transportation
Crater Ridge**
WY-BHF-000280
8/26/2021

6,232 acres
8/24/21 at 1235 hrs
from MMA Flight



0 1 Miles

- Helipoint
- ▬ Division Break
- ▬ Incident Command Post
- ▬ Drop Point
- ▬ Camp
- Resource Location
- Mobile Weather Unit
- Repeater
- ▬ Access or Improved Road
- ▬ Fire Edge
- ▬ Contained Line
- ▬ Trail
- ▬ Driveway or Service Road
- ▬ 4WD Trail
- ▬ Local Road
- ▬ Gravel, Suitable for Passenger Car
- ▬ Not Maintained for Passenger Car
- ▬ Wildfire Daily Fire Perimeter
- ▬ Fire Closure Area
- ▬ Forest Service Ownership
- ▬ Bureau of Indian Affairs (BIA)



TO LOVELL
←