

Planning Map Final

Crater Ridge
WY-BHF-000280
09/08/2021

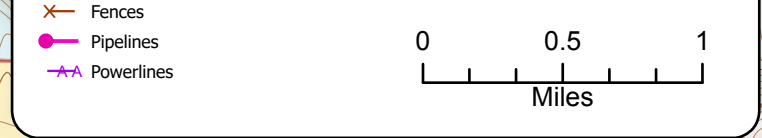
6502 acres
9/6/2021 at 1908 hrs
from MMA Flight



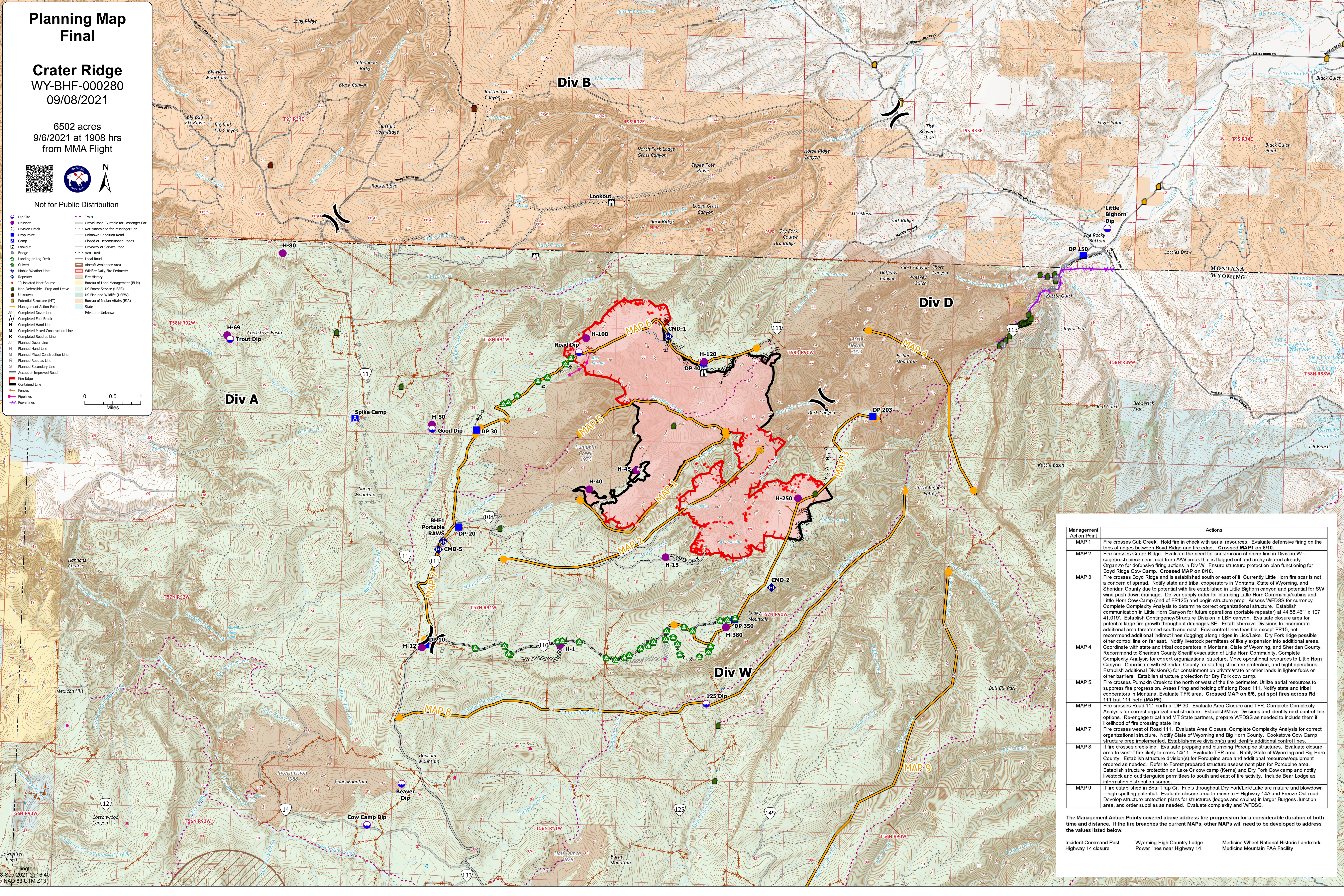
Not for Public Distribution

Legend:

- Dip Site
- Helispot
- ⌘ Division Break
- Drop Point
- Ⓜ Camp
- Ⓜ Lookout
- Ⓜ Bridge
- Ⓜ Landing or Log Deck
- Ⓜ Culvert
- Ⓜ Mobile Weather Unit
- Ⓜ Repeater
- Ⓜ IR Isolated Heat Source
- Ⓜ Non-Defensible - Prep and Leave
- Ⓜ Unknown
- Ⓜ Potential Structure (MT)
- Ⓜ Management Action Point
- Ⓜ Private or Unknown
- Ⓜ Completed Dozer Line
- Ⓜ Completed Fuel Break
- Ⓜ Completed Hand Line
- Ⓜ Completed Mixed Construction Line
- Ⓜ Planned Dozer Line
- Ⓜ Planned Hand Line
- Ⓜ Planned Mixed Construction Line
- Ⓜ Planned Road as Line
- Ⓜ Planned Secondary Line
- Ⓜ Access or Improved Road
- Ⓜ Fire Edge
- Ⓜ Contained Line
- Ⓜ Fences
- Ⓜ Pipelines
- Ⓜ Powerlines
- Ⓜ Trails
- Ⓜ Gravel Road, Suitable for Passenger Car
- Ⓜ Not Maintained for Passenger Car
- Ⓜ Unknown Condition Road
- Ⓜ Closed or Decommissioned Roads
- Ⓜ Driveway or Service Road
- Ⓜ 4WD Trail
- Ⓜ Local Road
- Ⓜ Aircraft Avoidance Area
- Ⓜ Wildfire Daily Fire Perimeter
- Ⓜ Fire History
- Ⓜ Bureau of Land Management (BLM)
- Ⓜ US Forest Service (USFS)
- Ⓜ US Fish and Wildlife (USFW)
- Ⓜ Bureau of Indian Affairs (BIA)
- Ⓜ State



8-Sep-2021 @ 16:40
NAD 83 UTM Z12



Management Action Point	Actions
MAP 1	Fire crosses Cub Creek. Hold fire in check with aerial resources. Evaluate defensive firing on the tops of ridges between Boyd Ridge and fire edge. Crossed MAP1 on 8/10.
MAP 2	Fire crosses Crater Ridge. Evaluate the need for construction of dozer line in Division W - sagebrush piece near road from A/W break that is flagged out and archy cleared already. Organize for defensive firing actions in Div W. Ensure structure protection plan functioning for Boyd Ridge Cow Camp. Crossed MAP 2 on 8/10.
MAP 3	Fire crosses Boyd Ridge and is established south or east of it. Currently Little Horn fire scar is not a concern of spread. Notify state and tribal cooperators in Montana, State of Wyoming, and Sheridan County due to potential with fire established in Little Bighorn canyon and potential for SW wind push down drainage. Deliver supply order for plumbing Little Horn Community/cabins and Little Horn Cow Camp (end of FR 125) and begin structure prep. Assess WFDDSS for currency. Complete Complexity Analysis to determine correct organizational structure. Establish communication in Little Horn Canyon for future operations (portable repeater) at 44 58.461' x 107 41.019'. Establish Contingency/Structure Division in LBH canyon. Evaluate closure area for potential large fire growth throughout drainages SE. Establish Move Divisions to incorporate additional area threatened south and east. Few control lines feasible except FR 15, not recommend additional indirect lines (logging) along ridges in Lick Lake. Dry Fork ridge possible other control line on far east. Notify livestock permittees of likely expansion into additional areas.
MAP 4	Coordinate with state and tribal cooperators in Montana, State of Wyoming, and Sheridan County. Recommend to Sheridan County Sheriff evacuation of Little Horn Community. Complete Complexity Analysis for correct organizational structure. Move operational resources to Little Horn Canyon. Coordinate with Sheridan County for staffing structure protection, and night operations. Establish additional Division(s) for containment on private/state or other lands in lighter fuels or other barriers. Establish structure protection for Dry Fork cow camp.
MAP 5	Fire crosses Pumpkin Creek to the north or west of the fire perimeter. Utilize aerial resources to suppress fire progression. Assess firing and holding off along Road 111. Notify state and tribal cooperators in Montana. Evaluate TFR area. Crossed MAP on 8/6, put spot fires across Rd 111 but 111 held (MAP5).
MAP 6	Fire crosses Road 111 north of DP 30. Evaluate Area Closure and TFR. Complete Complexity Analysis for correct organizational structure. Establish/Move Divisions and identify next control line options. Re-engage tribal and MT State partners, prepare WFDDSS as needed to include them if likelihood of fire crossing state line.
MAP 7	Fire crosses west of Road 111. Evaluate Area Closure. Complete Complexity Analysis for correct organizational structure. Notify State of Wyoming and Big Horn County. Cookstove Cow Camp structure prep implemented. Establish/move division(s) and identify additional control lines.
MAP 8	If fire crosses creek/line. Evaluate prepping and plumbing Porcupine structures. Evaluate closure area to west if fire likely to cross 14/11. Evaluate TFR area. Notify State of Wyoming and Big Horn County. Establish structure division(s) for Porcupine area and additional resources/equipment ordered as needed. Refer to Forest prepared structure assessment plan for Porcupine area. Establish structure protection on Lake Cr or cow camp (Kerns) and Dry Fork Cow camp and notify livestock and outfitter/guide permittees to south and east of fire activity. Include Bear Lodge as information distribution source.
MAP 9	If fire established in Bear Trap Cr. Fuels throughout Dry Fork/Lick/Lake are mature and blowdown - high spotting potential. Evaluate closure area to move to - Highway 14A and Freeze Out road. Develop structure protection plans for structures (lodges and cabins) in larger Burgess Junction area, and order supplies as needed. Evaluate complexity and WFDDSS.

The Management Action Points covered above address fire progression for a considerable duration of both time and distance. If the fire breaches the current MAPs, other MAPs will need to be developed to address the values listed below.

- Incident Command Post Highway 14 closure
- Wyoming High Country Lodge Power lines near Highway 14
- Medicine Wheel National Historic Landmark Medicine Mountain FAA Facility