

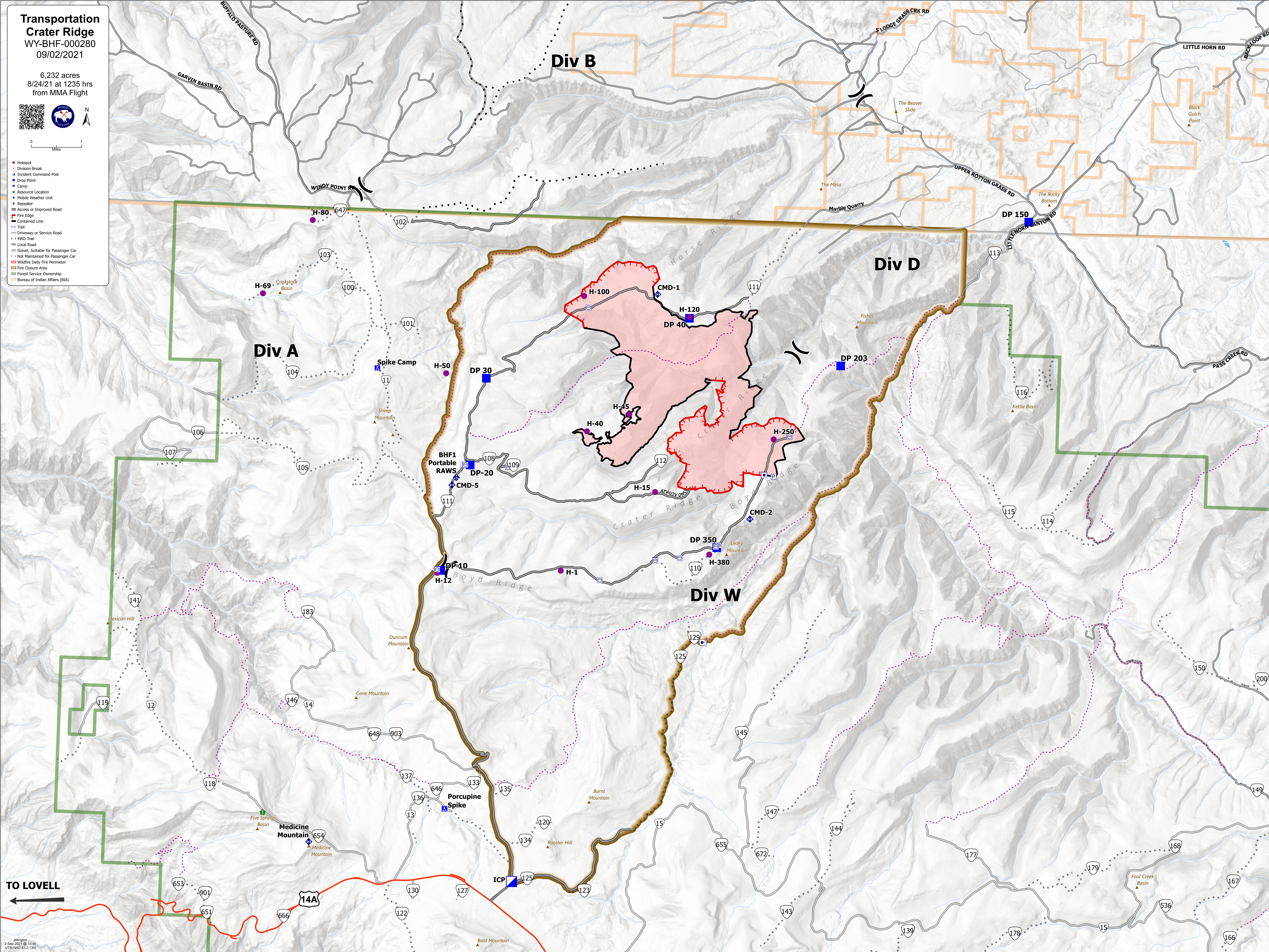
**Transportation
Crater Ridge**
WY-BHF-000280
09/02/2021

6,232 acres
8/24/21 at 1235 hrs
from MMA Flight



0 1
Miles

- Helispot
- Division Break
- Incident Command Post
- Drop Point
- Camp
- Resource Location
- Mobile Weather Unit
- Repeater
- Access or Improved Road
- Fire Edge
- Contained Line
- Trail
- Driveway or Service Road
- 4WD Trail
- Local Road
- Gravel, Suitable for Passenger Car
- Not Maintained for Passenger Car
- Wildfire Daily Fire Perimeter
- Fire Closure Area
- Forest Service Ownership
- Bureau of Indian Affairs (BIA)



TO LOVELL
←