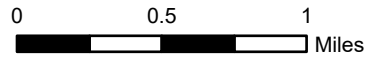


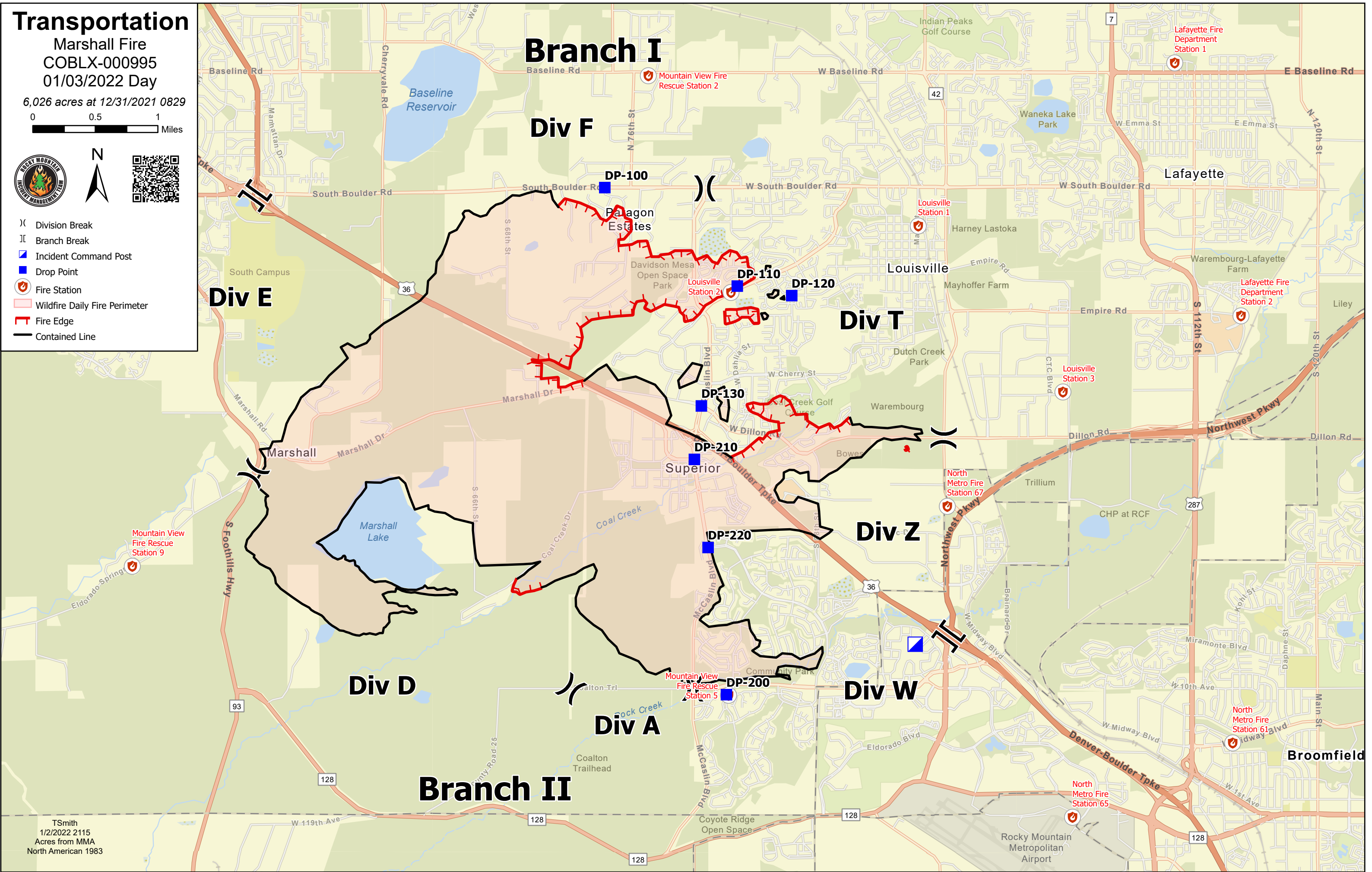
Transportation

Marshall Fire
COBLX-000995
01/03/2022 Day

6,026 acres at 12/31/2021 0829



- () Division Break
- || Branch Break
- Incident Command Post
- Drop Point
- 🚒 Fire Station
- 🔴 Wildfire Daily Fire Perimeter
- 🔴 Fire Edge
- Contained Line



TSmith
1/2/2022 2115
Acres from MMA
North American 1983