


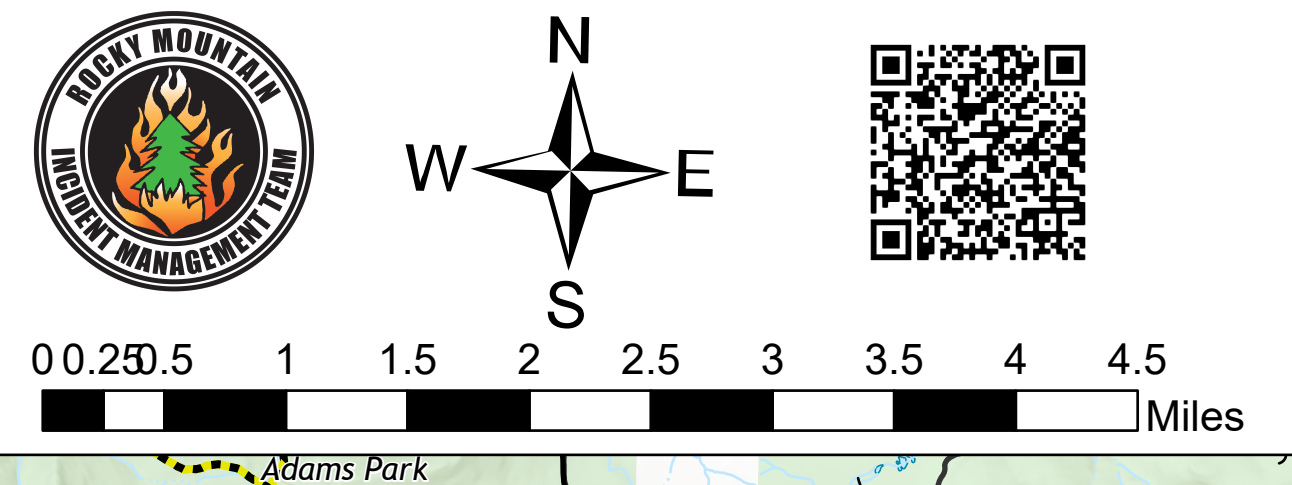
AirOps

Morgan Creek

WY-MRF-000260

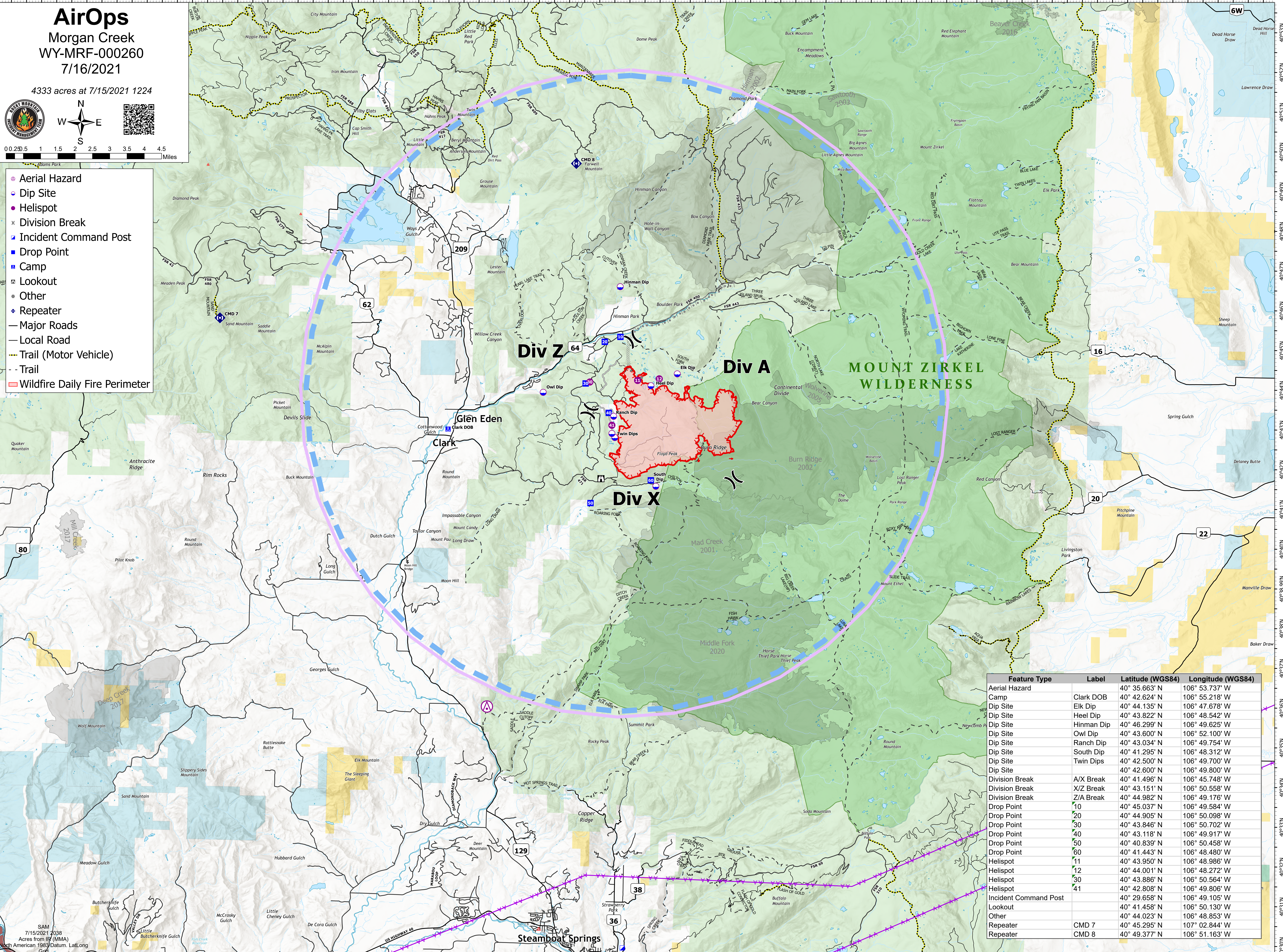
7/16/2021

4333 acres at 7/15/2021 1224

0 0.25 0.5 1 1.5 2 2.5 3 3.5 4 4.5 Miles

- ⬢ Aerial Hazard
- ⬢ Dip Site
- ⬢ Helispot
- ⌘ Division Break
- ▣ Incident Command Post
- ▣ Drop Point
- ▣ Camp
- ▣ Lookout
- Other
- ◆ Repeater
- Major Roads
- Local Road
- Trail (Motor Vehicle)
- Trail
- Wildfire Daily Fire Perimeter



Feature Type	Label	Latitude (WGS84)	Longitude (WGS84)
Aerial Hazard		40° 35.663' N	106° 53.737' W
Camp	Clark DOB	40° 42.624' N	106° 55.218' W
Dip Site	Elk Dip	40° 44.135' N	106° 47.678' W
Dip Site	Heel Dip	40° 43.822' N	106° 48.542' W
Dip Site	Hinman Dip	40° 46.299' N	106° 49.625' W
Dip Site	Owl Dip	40° 43.600' N	106° 52.100' W
Dip Site	Ranch Dip	40° 43.034' N	106° 49.754' W
Dip Site	South Dip	40° 41.295' N	106° 48.312' W
Dip Site	Twin Dips	40° 42.500' N	106° 49.700' W
Dip Site		40° 42.600' N	106° 49.800' W
Division Break	A/X Break	40° 41.496' N	106° 45.748' W
Division Break	X/Z Break	40° 43.151' N	106° 50.558' W
Division Break	Z/A Break	40° 44.982' N	106° 49.176' W
Drop Point	10	40° 45.037' N	106° 49.584' W
Drop Point	20	40° 44.905' N	106° 50.098' W
Drop Point	30	40° 43.846' N	106° 50.702' W
Drop Point	40	40° 43.118' N	106° 49.917' W
Drop Point	50	40° 40.839' N	106° 50.458' W
Drop Point	60	40° 41.443' N	106° 48.480' W
Helispot	11	40° 43.950' N	106° 48.986' W
Helispot	12	40° 44.001' N	106° 48.272' W
Helispot	30	40° 43.886' N	106° 50.564' W
Helispot	41	40° 42.808' N	106° 49.806' W
Incident Command Post		40° 29.658' N	106° 49.105' W
Lookout		40° 41.458' N	106° 50.130' W
Other		40° 44.023' N	106° 48.853' W
Repeater	CMD 7	40° 45.295' N	107° 02.844' W
Repeater	CMD 8	40° 49.377' N	106° 51.163' W

SAM
7/15/2021 1208
Acres from IFF (MMA)
North American 1983 Datum, Lat/Long
Grid