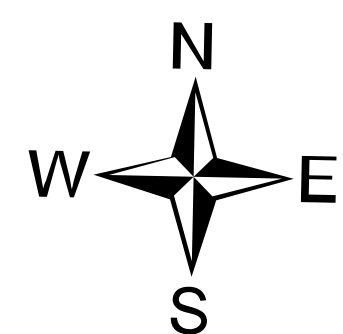


AirOps

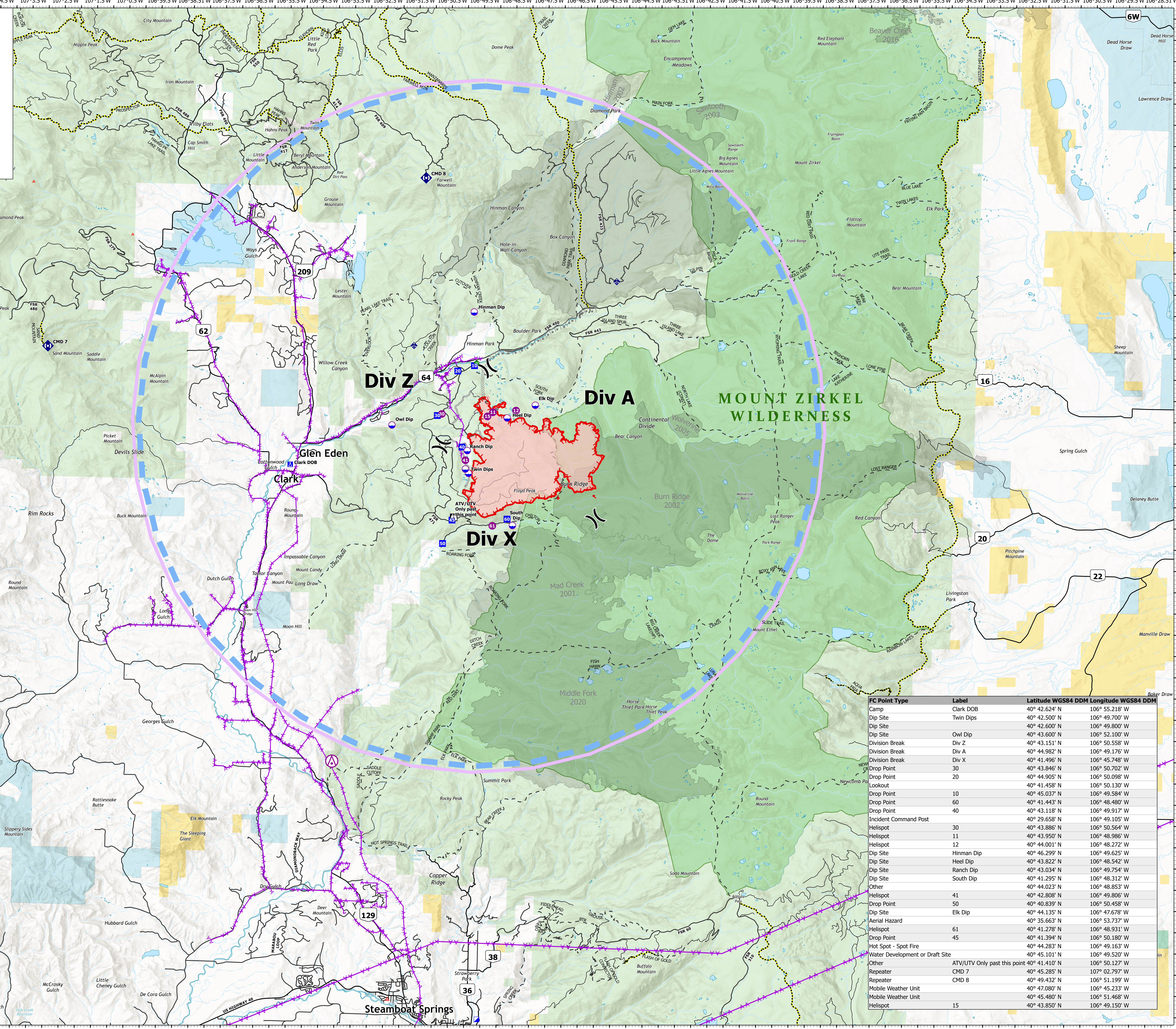
Morgan Creek Branch
WY-MRF-000260
7/18/2021

4,396 acres at 7/17/2021 1100hrs



0 0.5 1 1.5 2 2.5 3 Miles

- ⊗ Aerial Hazard
- ⊗ Dip Site
- ⊗ Helispot
- ⊗ Division Break
- ▣ Incident Command Post
- Drop Point
- Camp
- Lookout
- ⊗ Hot Spot - Spot Fire
- Other
- Water Development or Draft Site
- ◆ Mobile Weather Unit
- ◆ Repeater
- Major Roads
- Local Road
- Trail (Motor Vehicle)
- Trail
- Wildfire Daily Fire Perimeter



FC Point Type	Label	Latitude WGS84 DDM	Longitude WGS84 DDM
Camp	Clark DOB	40° 42.624' N	106° 55.218' W
Dip Site	Twin Dips	40° 42.500' N	106° 49.700' W
Dip Site	Heel Dip	40° 42.600' N	106° 49.800' W
Dip Site	Owl Dip	40° 43.600' N	106° 52.100' W
Division Break	Div Z	40° 43.151' N	106° 50.558' W
Division Break	Div A	40° 44.982' N	106° 49.176' W
Division Break	Div X	40° 41.496' N	106° 45.748' W
Drop Point	30	40° 43.846' N	106° 50.702' W
Drop Point	20	40° 44.905' N	106° 50.098' W
Lookout		40° 41.458' N	106° 50.130' W
Drop Point	10	40° 45.037' N	106° 49.584' W
Drop Point	60	40° 41.443' N	106° 48.480' W
Drop Point	40	40° 43.118' N	106° 49.917' W
Incident Command Post		40° 29.658' N	106° 49.105' W
Helispot	30	40° 43.886' N	106° 50.564' W
Helispot	11	40° 43.950' N	106° 48.986' W
Helispot	12	40° 44.001' N	106° 48.272' W
Dip Site	Hinman Dip	40° 46.299' N	106° 49.625' W
Dip Site	Heel Dip	40° 43.822' N	106° 48.542' W
Dip Site	Ranch Dip	40° 43.034' N	106° 49.754' W
Dip Site	South Dip	40° 41.295' N	106° 48.312' W
Other		40° 44.023' N	106° 48.853' W
Helispot	41	40° 42.808' N	106° 49.806' W
Drop Point	50	40° 40.839' N	106° 50.458' W
Dip Site	Elk Dip	40° 44.135' N	106° 47.678' W
Aerial Hazard		40° 35.663' N	106° 53.737' W
Helispot	61	40° 41.278' N	106° 48.931' W
Drop Point	45	40° 41.394' N	106° 50.180' W
Hot Spot - Spot Fire		40° 44.283' N	106° 49.163' W
Water Development or Draft Site		40° 45.101' N	106° 49.520' W
Other	ATV/UTV Only past this point	40° 41.410' N	106° 50.127' W
Repeater	CMD 7	40° 45.285' N	107° 02.797' W
Repeater	CMD 8	40° 49.432' N	106° 51.199' W
Mobile Weather Unit		40° 47.080' N	106° 45.233' W
Mobile Weather Unit		40° 45.480' N	106° 51.468' W
Helispot	15	40° 43.850' N	106° 49.150' W

SAM
7/17/2021 2237
Acres from IFR (MMA)
North American 1983 Datum, Lat/Long