

107°W

106°55'W

106°50'W

106°45'W

106°40'W

106°35'W

Continental Divide Trail Reroute

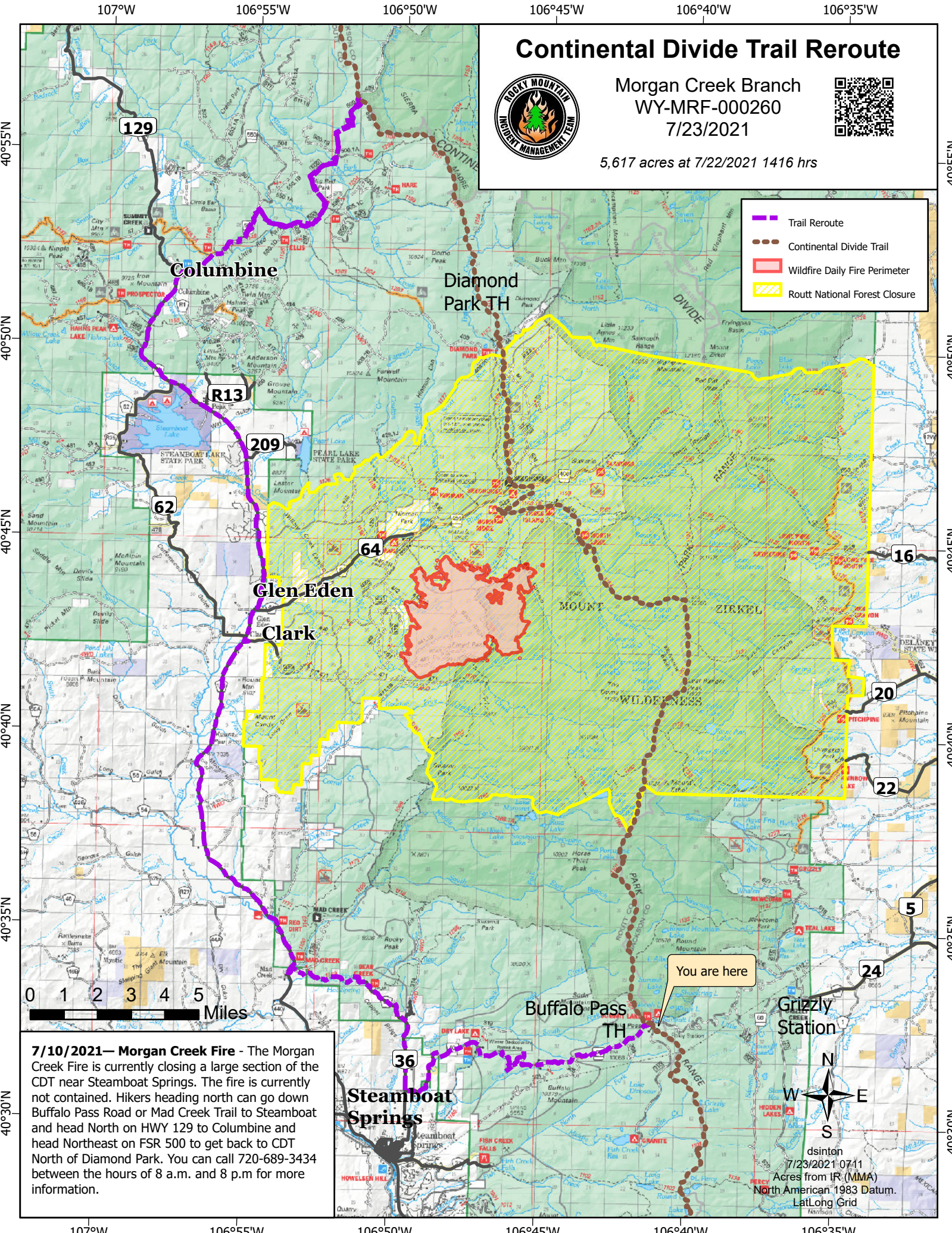


Morgan Creek Branch
WY-MRF-000260
7/23/2021



5,617 acres at 7/22/2021 1416 hrs

- Trail Reroute
- Continental Divide Trail
- Wildfire Daily Fire Perimeter
- Routt National Forest Closure



7/10/2021— Morgan Creek Fire - The Morgan Creek Fire is currently closing a large section of the CDT near Steamboat Springs. The fire is currently not contained. Hikers heading north can go down Buffalo Pass Road or Mad Creek Trail to Steamboat and head North on HWY 129 to Columbine and head Northeast on FSR 500 to get back to CDT North of Diamond Park. You can call 720-689-3434 between the hours of 8 a.m. and 8 p.m for more information.



dsinton
7/23/2021 07:11
Acres from IR (MMA)
North American 1983 Datum.
LatLong Grid