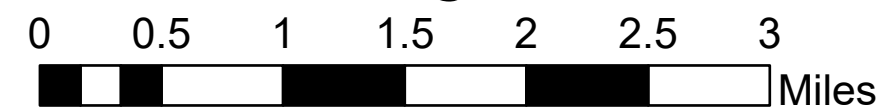
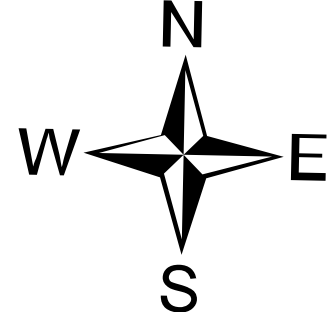


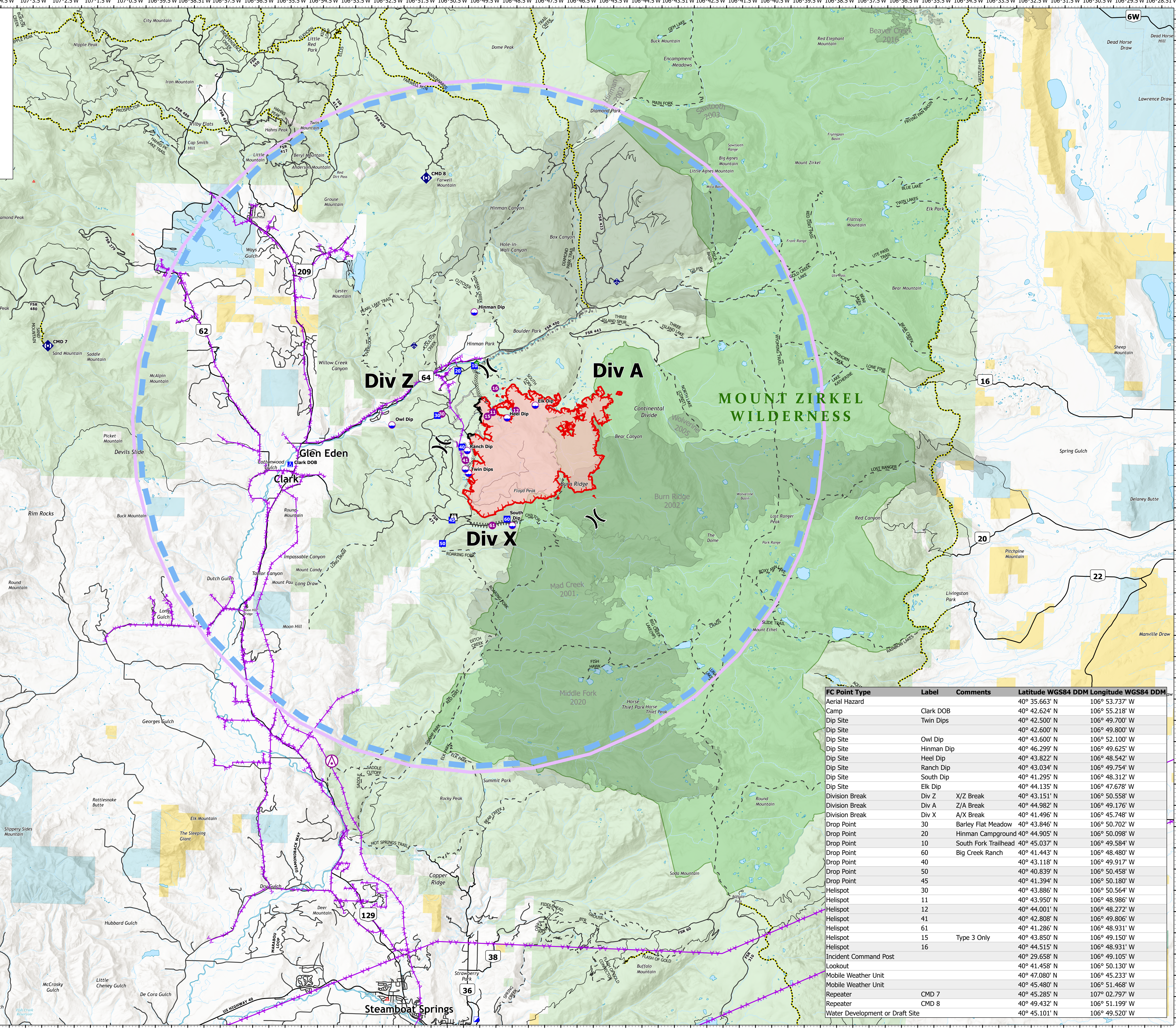
AirOps

Morgan Creek Branch
WY-MRF-000260
7/24/2021

5,651 acres at 7/23/2021 1345 hrs



- Aerial Hazard
- Dip Site
- Helispot
- ⌘ Division Break
- Incident Command Post
- Drop Point
- Camp
- Lookout
- Water Development or Draft Site
- ◆ Mobile Weather Unit
- ◆ Repeater
- Major Roads
- Local Road
- Trail (Motor Vehicle)
- - - Trail
- ⊗ Completed Dozer Line
- ⊗ Completed Fuel Break
- ⊗ Completed Hand Line
- ⊗ Planned Burnout
- ⊗ Planned Dozer Line
- ⊗ Planned Hand Line
- ⊗ Planned Mixed Construction Line
- ⊗ Planned Road as Line
- Access or Improved Road
- Other
- ⬇ Aerial Hazard
- ⬇ Temporary Flight Restriction
- ⬇ Fire Edge
- ⬇ Contained Line
- ⬇ Wildfire Daily Fire Perimeter



FC Point Type	Label	Comments	Latitude WGS84 DDM	Longitude WGS84 DDM
Aerial Hazard	Clark DOB		40° 35.663' N	106° 53.737' W
Camp	Twin Dips		40° 42.500' N	106° 49.700' W
Dip Site			40° 42.600' N	106° 49.800' W
Dip Site	Owl Dip		40° 43.600' N	106° 52.100' W
Dip Site	Hinman Dip		40° 46.299' N	106° 49.625' W
Dip Site	Heel Dip		40° 43.822' N	106° 48.542' W
Dip Site	Ranch Dip		40° 43.034' N	106° 49.754' W
Dip Site	South Dip		40° 41.295' N	106° 48.312' W
Dip Site	Elk Dip		40° 44.135' N	106° 47.678' W
Division Break	Div Z	X/Z Break	40° 43.151' N	106° 50.558' W
Division Break	Div A	Z/A Break	40° 44.982' N	106° 49.176' W
Division Break	Div X	A/X Break	40° 41.496' N	106° 45.748' W
Drop Point	30	Barley Flat Meadow	40° 43.846' N	106° 50.702' W
Drop Point	20	Hinman Campground	40° 44.905' N	106° 50.098' W
Drop Point	10	South Fork Trailhead	40° 45.037' N	106° 49.584' W
Drop Point	60	Big Creek Ranch	40° 41.443' N	106° 48.480' W
Drop Point	40		40° 43.118' N	106° 49.917' W
Drop Point	50		40° 40.839' N	106° 50.458' W
Drop Point	45		40° 41.394' N	106° 50.180' W
Helispot	30		40° 43.886' N	106° 50.564' W
Helispot	11		40° 43.950' N	106° 48.986' W
Helispot	12		40° 44.001' N	106° 48.272' W
Helispot	41		40° 42.808' N	106° 49.806' W
Helispot	61		40° 41.286' N	106° 48.931' W
Helispot	15	Type 3 Only	40° 43.850' N	106° 49.150' W
Helispot	16		40° 44.515' N	106° 48.931' W
Incident Command Post			40° 29.658' N	106° 49.105' W
Lookout			40° 41.458' N	106° 50.130' W
Mobile Weather Unit			40° 47.080' N	106° 51.233' W
Mobile Weather Unit			40° 45.480' N	106° 51.468' W
Repeater	CMD 7		40° 45.285' N	107° 02.797' W
Repeater	CMD 8		40° 49.432' N	106° 51.199' W
Water Development or Draft Site			40° 45.101' N	106° 49.520' W

SAM
7/23/2021 1104
Acres from IFR (MMA)
North American 1983 Datum, Lat/Long
Grid