

106°54'30"W 106°54'W 106°53'30"W 106°53'W 106°52'30"W 106°52'W 106°51'30"W 106°51'W 106°50'30"W 106°50'W 106°49'30"W 106°49'W 106°48'30"W 106°48'W 106°47'30"W 106°47'W 106°46'30"W 106°46'W 106°45'30"W 106°45'W 106°44'30"W 106°44'W 106°43'30"W 106°43'W 106°42'30"W 106°42'W 106°41'30"W 106°41'W 106°40'30"W 106°40'W



Muddy Slide WY-MRF-000195

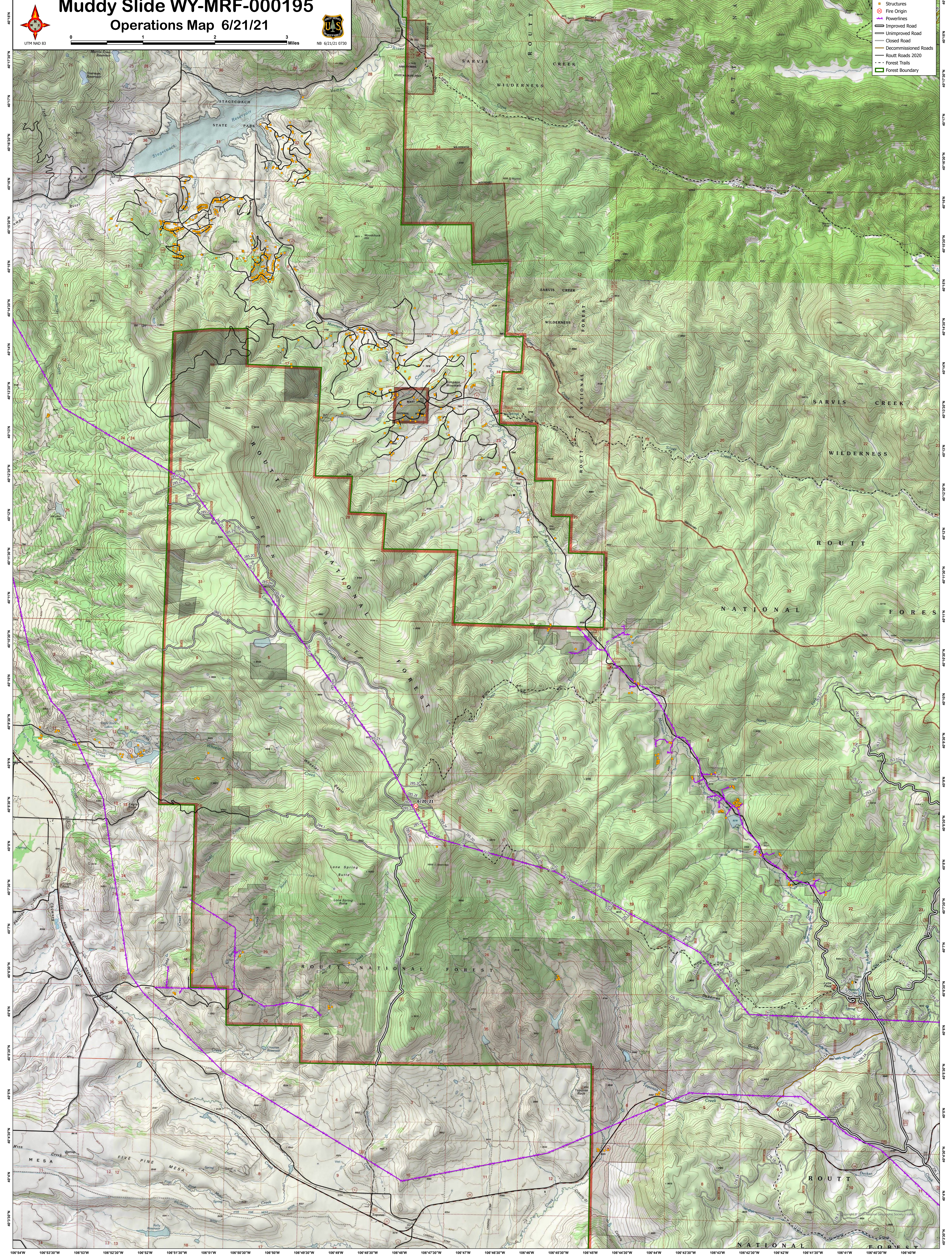
Operations Map 6/21/21



NB 6/21/21 0730



- Structures
- Fire Origin
- Powerlines
- Improved Road
- Unimproved Road
- Closed Road
- Decommissioned Roads
- Route Roads 2020
- Route Trails
- Forest Boundary



106°54'30"W 106°53'30"W 106°53'W 106°52'30"W 106°52'W 106°51'30"W 106°51'W 106°50'30"W 106°50'W 106°49'30"W 106°49'W 106°48'30"W 106°48'W 106°47'30"W 106°47'W 106°46'30"W 106°46'W 106°45'30"W 106°45'W 106°44'30"W 106°44'W 106°43'30"W 106°43'W 106°42'30"W 106°42'W 106°41'30"W 106°41'W 106°40'30"W 106°40'W