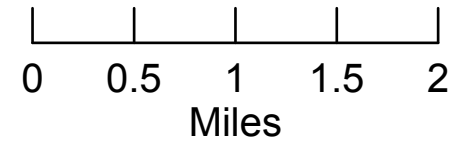


# Air Operations

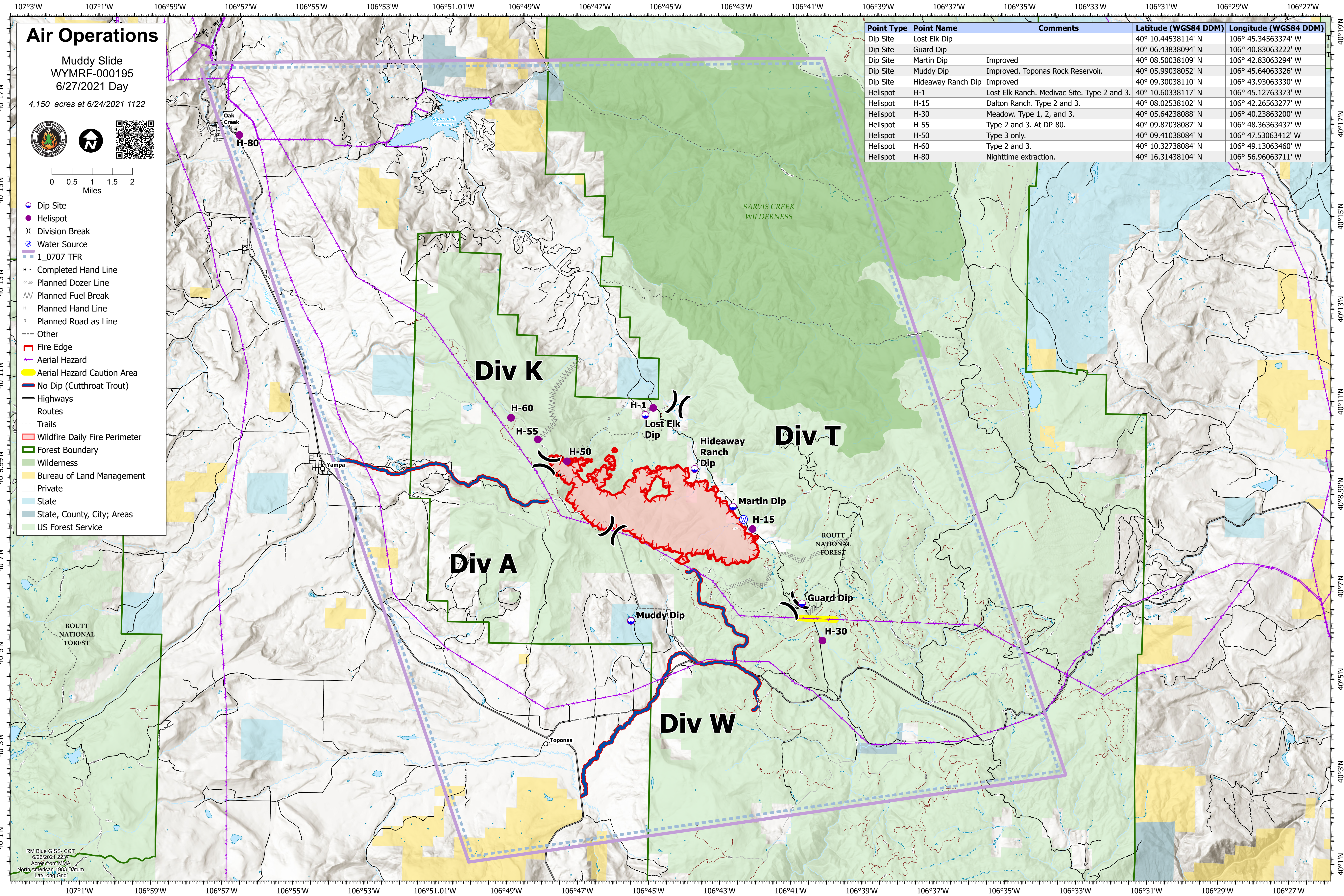
Muddy Slide  
WYMRF-000195  
6/27/2021 Day

4,150 acres at 6/24/2021 1122



- Dip Site
- Helispot
- X Division Break
- ⊙ Water Source
- 1\_0707 TFR
- Completed Hand Line
- - - Planned Dozer Line
- - - Planned Fuel Break
- - - Planned Hand Line
- - - Planned Road as Line
- - - Other
- Fire Edge
- Aerial Hazard
- Aerial Hazard Caution Area
- No Dip (Cutthroat Trout)
- Highways
- Routes
- - - Trails
- Wildfire Daily Fire Perimeter
- Forest Boundary
- Wilderness
- Bureau of Land Management
- Private
- State
- State, County, City; Areas
- US Forest Service

Point Type	Point Name	Comments	Latitude (WGS84 DDM)	Longitude (WGS84 DDM)
Dip Site	Lost Elk Dip		40° 10.44538114' N	106° 45.34563374' W
Dip Site	Guard Dip		40° 06.43838094' N	106° 40.83063222' W
Dip Site	Martin Dip	Improved	40° 08.50038109' N	106° 42.83063294' W
Dip Site	Muddy Dip	Improved. Toponas Rock Reservoir.	40° 05.99038052' N	106° 45.64063326' W
Dip Site	Hideaway Ranch Dip	Improved	40° 09.30038110' N	106° 43.93063330' W
Helispot	H-1	Lost Elk Ranch. Medivac Site. Type 2 and 3.	40° 10.60338117' N	106° 45.12763373' W
Helispot	H-15	Dalton Ranch. Type 2 and 3.	40° 08.02538102' N	106° 42.26563277' W
Helispot	H-30	Meadow. Type 1, 2, and 3.	40° 05.64238088' N	106° 40.23863200' W
Helispot	H-55	Type 2 and 3. At DP-80.	40° 09.87038087' N	106° 48.36363437' W
Helispot	H-50	Type 3 only.	40° 09.41038084' N	106° 47.53063412' W
Helispot	H-60	Type 2 and 3.	40° 10.32738084' N	106° 49.13063460' W
Helispot	H-80	Nighttime extraction.	40° 16.31438104' N	106° 56.96063711' W



RM Blue GISS CCT  
6/26/2021 2237  
Acres from NMA  
North American 1983 Datum  
Lat/Long Grid