

Air Operations

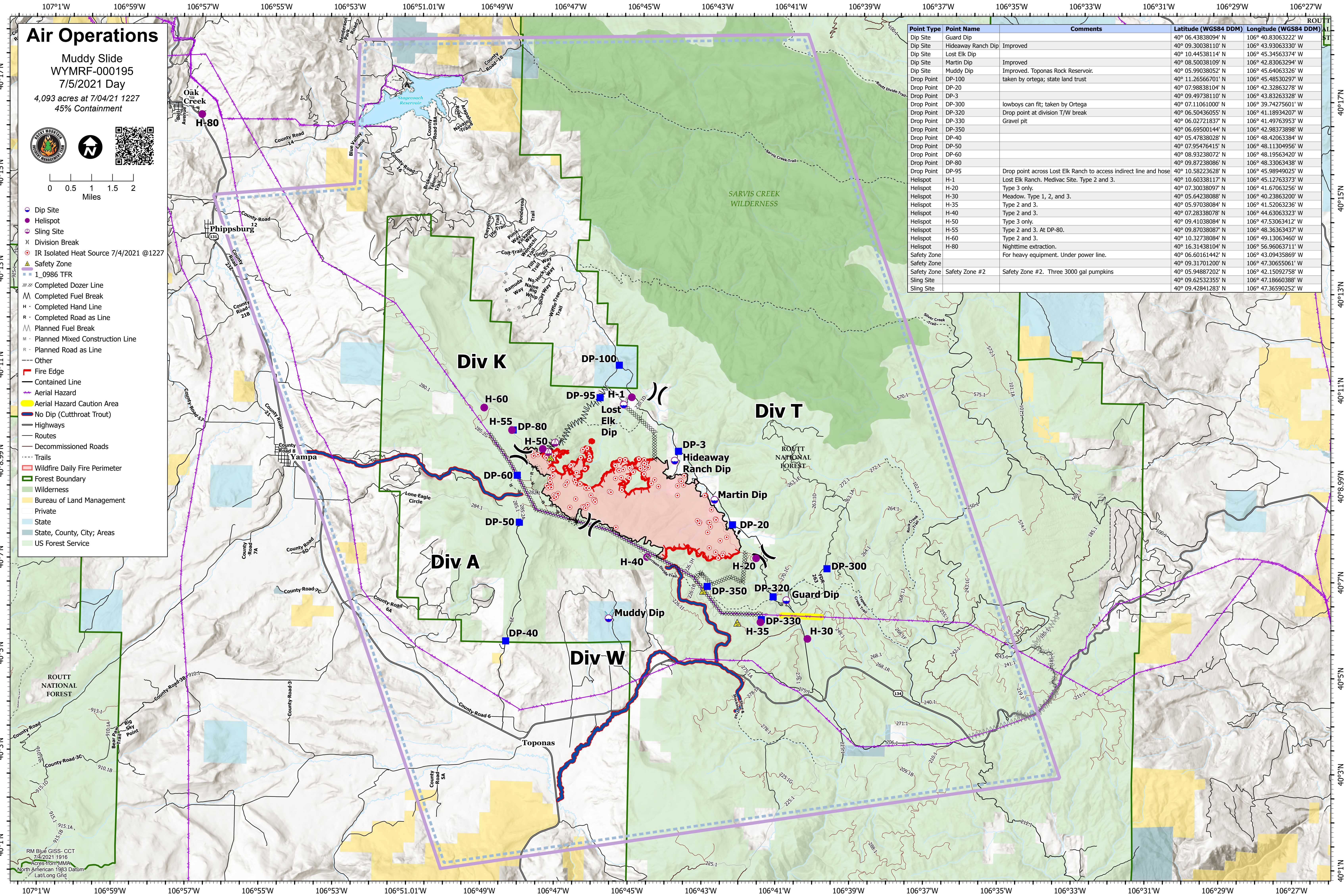
Muddy Slide
WYMRP-000195
7/5/2021 Day
4,093 acres at 7/04/21 1227
45% Containment



0 0.5 1 1.5 2
Miles

- Dip Site
- Helispot
- Sling Site
- X Division Break
- IR Isolated Heat Source 7/4/2021 @1227
- ▲ Safety Zone
- ▬ 1_0986 TFR
- ▬ Completed Dozer Line
- ▬ Completed Fuel Break
- ▬ Completed Hand Line
- ▬ Completed Road as Line
- ▬ Planned Fuel Break
- ▬ Planned Mixed Construction Line
- ▬ Planned Road as Line
- ▬ Other
- ▬ Fire Edge
- ▬ Contained Line
- ▬ Aerial Hazard
- ▬ Aerial Hazard Caution Area
- ▬ No Dip (Cutthroat Trout)
- ▬ Highways
- ▬ Routes
- ▬ Decommissioned Roads
- ▬ Trails
- ▬ Wildfire Daily Fire Perimeter
- ▬ Forest Boundary
- ▬ Wilderness
- ▬ Bureau of Land Management
- ▬ Private
- ▬ State
- ▬ State, County, City; Areas
- ▬ US Forest Service

Point Type	Point Name	Comments	Latitude (WGS84 DDM)	Longitude (WGS84 DDM)
Dip Site	Guard Dip		40° 06.43838094' N	106° 40.83063222' W
Dip Site	Hideaway Ranch Dip	Improved	40° 09.30038110' N	106° 43.93063330' W
Dip Site	Lost Elk Dip		40° 10.44538114' N	106° 45.34563374' W
Dip Site	Martin Dip	Improved	40° 08.50038109' N	106° 42.83063294' W
Dip Site	Muddy Dip	Improved. Toponas Rock Reservoir.	40° 05.99038052' N	106° 45.64063326' W
Drop Point	DP-100	taken by ortega; state land trust	40° 11.26566701' N	106° 45.48530297' W
Drop Point	DP-20		40° 07.98838104' N	106° 42.32863278' W
Drop Point	DP-3		40° 09.49738110' N	106° 43.83263328' W
Drop Point	DP-300	lowboys can fit; taken by Ortega	40° 07.11061000' N	106° 39.74275601' W
Drop Point	DP-320	Drop point at division T/W break	40° 06.50436055' N	106° 41.18934207' W
Drop Point	DP-330	Gravel pit	40° 06.02721837' N	106° 41.49763953' W
Drop Point	DP-350		40° 06.69500144' N	106° 42.98373898' W
Drop Point	DP-40		40° 05.47838028' N	106° 48.42063384' W
Drop Point	DP-50		40° 07.95476415' N	106° 48.11304956' W
Drop Point	DP-60		40° 08.93238072' N	106° 48.19563420' W
Drop Point	DP-80		40° 09.87238086' N	106° 48.33063438' W
Drop Point	DP-95	Drop point across Lost Elk Ranch to access indirect line and hose	40° 10.58223628' N	106° 45.98949025' W
Helispot	H-1	Lost Elk Ranch. Medivac Site. Type 2 and 3.	40° 10.60338117' N	106° 45.12763373' W
Helispot	H-20	Type 3 only.	40° 07.30038097' N	106° 41.67063256' W
Helispot	H-30	Meadow. Type 1, 2, and 3.	40° 05.64238088' N	106° 40.23863200' W
Helispot	H-35	Type 2 and 3.	40° 05.97038084' N	106° 41.52063236' W
Helispot	H-40	Type 2 and 3.	40° 07.28338078' N	106° 44.63063323' W
Helispot	H-50	Type 3 only.	40° 09.41038084' N	106° 47.53063412' W
Helispot	H-55	Type 2 and 3. At DP-80.	40° 09.87038087' N	106° 48.36363437' W
Helispot	H-60	Type 2 and 3.	40° 10.32738084' N	106° 49.13063460' W
Helispot	H-80	Nighttime extraction.	40° 16.31438104' N	106° 56.96063711' W
Safety Zone		For heavy equipment. Under power line.	40° 06.60161442' N	106° 43.09435869' W
Safety Zone			40° 09.31701200' N	106° 47.30655061' W
Safety Zone	Safety Zone #2	Safety Zone #2. Three 3000 gal pumpkins	40° 05.94887202' N	106° 42.15092758' W
Sling Site			40° 09.62532355' N	106° 47.18660388' W
Sling Site			40° 09.42841283' N	106° 47.36590252' W



RM Blue GISS- CCT
7/4/2021 1916
Acres from WMA
North American 1983 Datum
Lat/Long Grid