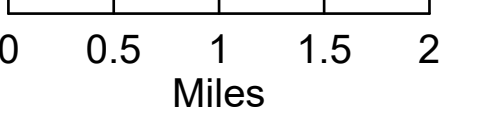


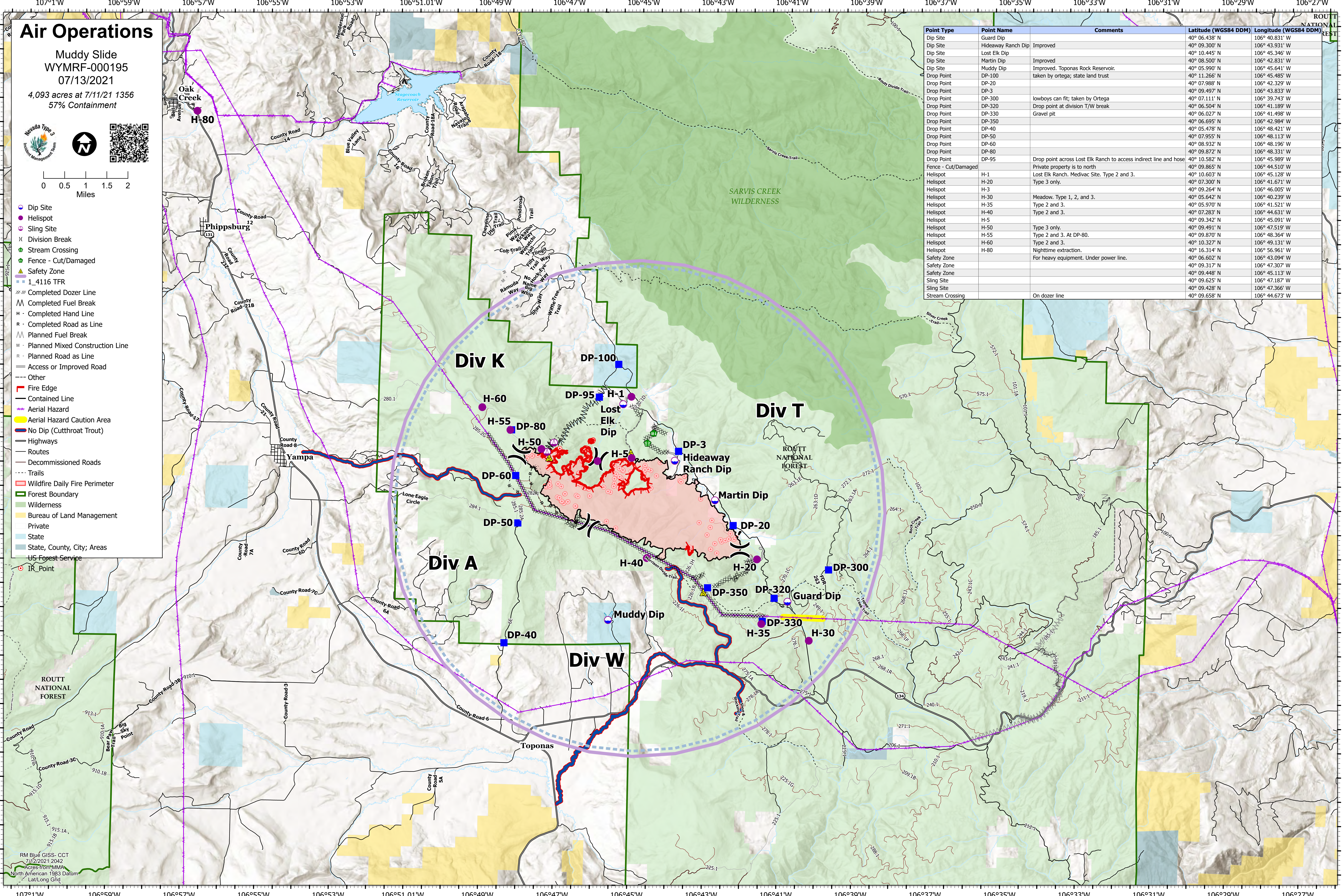
Air Operations

Muddy Slide
WYMRP-000195
07/13/2021
4,093 acres at 7/11/21 1356
57% Containment

- Dip Site
- Helispot
- Sling Site
- ✕ Division Break
- Stream Crossing
- Fence - Cut/Damaged
- ▲ Safety Zone
- 1,4116 TFR
- ✕ Completed Dozer Line
- Completed Fuel Break
- Completed Hand Line
- Completed Road as Line
- Planned Fuel Break
- Planned Mixed Construction Line
- Planned Road as Line
- Access or Improved Road
- Other
- Fire Edge
- Contained Line
- Aerial Hazard
- Aerial Hazard Caution Area
- No Dip (Cutthroat Trout)
- Highways
- Routes
- Decommissioned Roads
- Trails
- Wildfire Daily Fire Perimeter
- Forest Boundary
- Wilderness
- Bureau of Land Management
- Private
- State
- State, County, City; Areas
- US Forest Service
- IR Point



| Point Type | Point Name | Comments | Latitude (WGS84 DDM) | Longitude (WGS84 DDM) |
|---------------------|--------------------|---|----------------------|-----------------------|
| Dip Site | Guard Dip | | 40° 06.438' N | 106° 40.831' W |
| Dip Site | Hideaway Ranch Dip | Improved | 40° 09.300' N | 106° 43.931' W |
| Dip Site | Lost Elk Dip | | 40° 10.445' N | 106° 45.346' W |
| Dip Site | Martin Dip | Improved | 40° 08.500' N | 106° 42.831' W |
| Dip Site | Muddy Dip | Improved. Toponas Rock Reservoir. taken by Ortega; state land trust | 40° 05.990' N | 106° 45.641' W |
| Drop Point | DP-100 | | 40° 11.266' N | 106° 45.485' W |
| Drop Point | DP-20 | | 40° 07.988' N | 106° 42.329' W |
| Drop Point | DP-3 | | 40° 09.497' N | 106° 43.833' W |
| Drop Point | DP-300 | lowboys can fit; taken by Ortega | 40° 07.111' N | 106° 39.743' W |
| Drop Point | DP-320 | Drop point at division T/W break | 40° 06.504' N | 106° 41.189' W |
| Drop Point | DP-330 | Gravel pit | 40° 06.027' N | 106° 41.498' W |
| Drop Point | DP-350 | | 40° 06.695' N | 106° 42.984' W |
| Drop Point | DP-40 | | 40° 05.478' N | 106° 48.421' W |
| Drop Point | DP-50 | | 40° 07.955' N | 106° 48.113' W |
| Drop Point | DP-60 | | 40° 08.932' N | 106° 48.196' W |
| Drop Point | DP-80 | | 40° 09.872' N | 106° 48.331' W |
| Drop Point | DP-95 | Drop point across Lost Elk Ranch to access indirect line and hose | 40° 10.582' N | 106° 45.989' W |
| Fence - Cut/Damaged | | Private property is to north | 40° 09.865' N | 106° 44.510' W |
| Helispot | H-1 | Lost Elk Ranch. Medivac Site. Type 2 and 3. | 40° 10.603' N | 106° 45.128' W |
| Helispot | H-20 | Type 3 only. | 40° 07.300' N | 106° 41.671' W |
| Helispot | H-3 | | 40° 09.264' N | 106° 46.005' W |
| Helispot | H-30 | Meadow. Type 1, 2, and 3. | 40° 05.642' N | 106° 40.239' W |
| Helispot | H-35 | Type 2 and 3. | 40° 05.970' N | 106° 41.521' W |
| Helispot | H-40 | Type 2 and 3. | 40° 07.283' N | 106° 44.631' W |
| Helispot | H-5 | | 40° 09.342' N | 106° 45.091' W |
| Helispot | H-50 | Type 3 only. | 40° 09.491' N | 106° 47.519' W |
| Helispot | H-55 | Type 2 and 3. At DP-80. | 40° 09.870' N | 106° 48.364' W |
| Helispot | H-60 | Type 2 and 3. | 40° 10.327' N | 106° 49.131' W |
| Helispot | H-80 | Nighttime extraction. | 40° 16.314' N | 106° 56.961' W |
| Safety Zone | | For heavy equipment. Under power line. | 40° 06.602' N | 106° 43.094' W |
| Safety Zone | | | 40° 09.317' N | 106° 47.307' W |
| Safety Zone | | | 40° 09.448' N | 106° 45.113' W |
| Sling Site | | | 40° 09.625' N | 106° 47.187' W |
| Sling Site | | | 40° 09.428' N | 106° 47.366' W |
| Stream Crossing | | On dozer line | 40° 09.658' N | 106° 44.673' W |



RM Blue GISS- CCT
7/12/2021 2042
Acres from WMA
North American 1983 Datum
Lat/Long Grid