

Operations

Muddy Slide Branch
WYMRP-000195

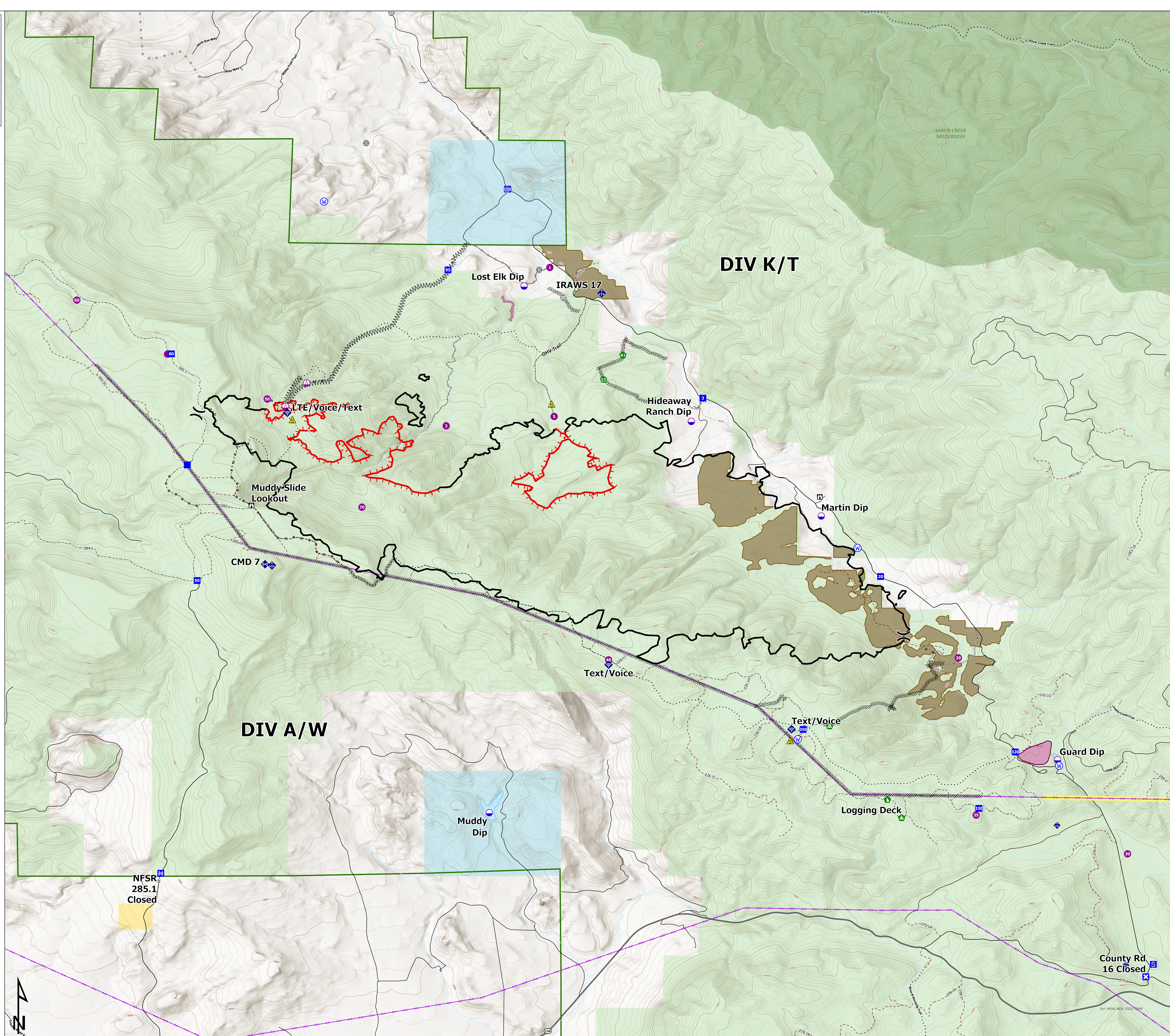
07/20/2021

4,093 acres at 07/14/2021 1144
70% Containment

- Dip Site
- Helispot
- Sling Site
- Division Break
- Drop Point
- Closure
- Staging Area
- Lookout
- Gate
- Bridge
- Stream Crossing
- Landing or Log Deck
- Fence - Cut/Damaged
- Dozer Push
- Mobile Weather Unit
- Internet Access
- Repeater
- Safety Zone
- Water Source
- Weather Station
- Completed Dozer Line
- Completed Fuel Break
- Completed Hand Line
- Completed Road as Line
- Planned Mixed Construction Line
- Planned Road as Line
- Access or Improved Road
- Other
- Fire Edge
- Contained Line
- Forest Boundary
- Highways
- Routes
- Improved Road
- Unimproved Road
- Closed Road
- Decommissioned Roads
- Trails
- Aerial Hazard
- Aerial Hazard Caution Area
- Ditch - No Heavy Equipment
- No Heavy Equipment
- Morrison II Harvest Units
- Wilderness
- Bureau of Land Management
- Private
- State
- US Forest Service



7/19/2021 2100
Acres from MMA
WGS 1984 Datum, Lat/Long Grid



County Rd
16 Closed

EX: NASA, NOAA, USGS, FEMA