

# Air Operations

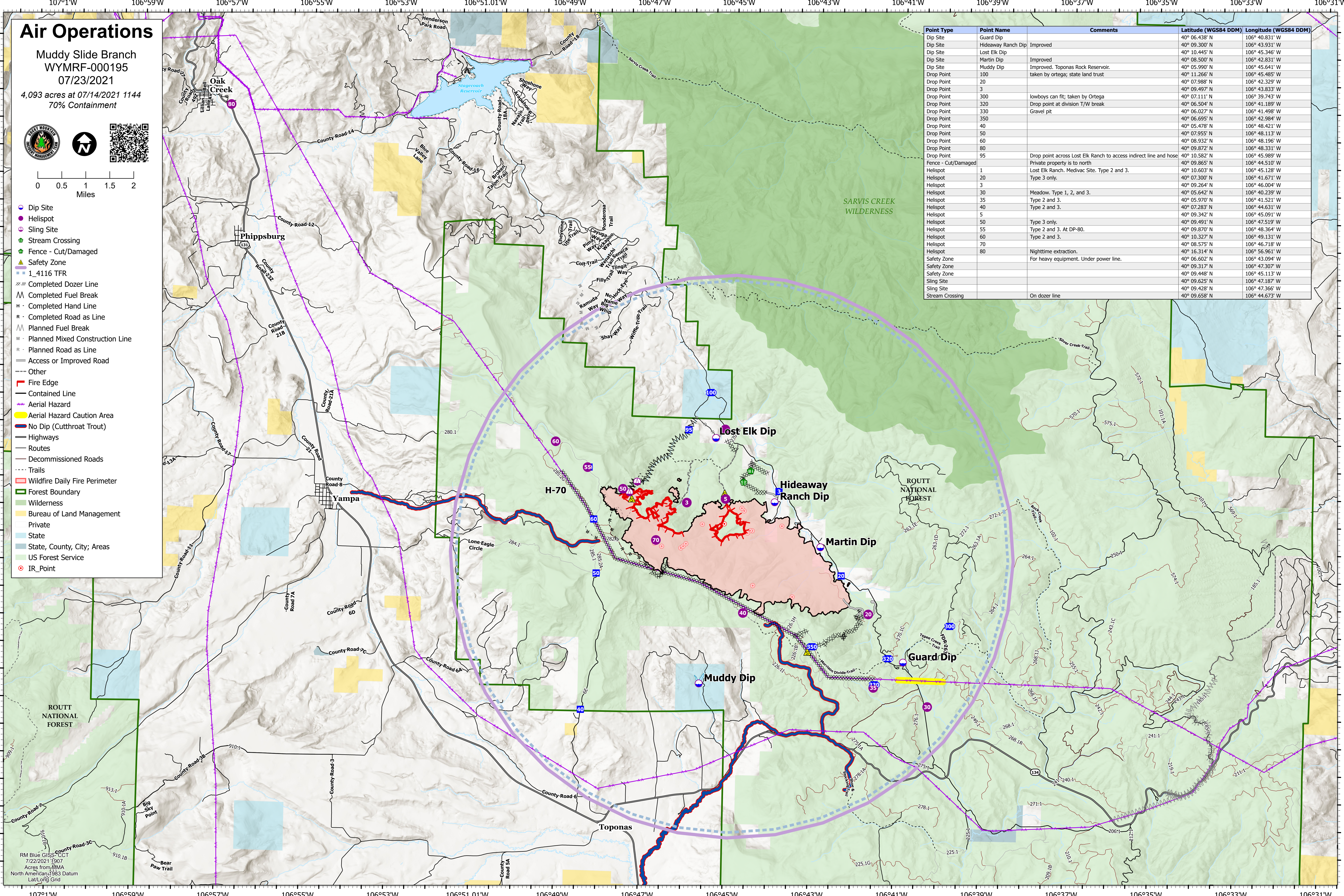
Muddy Slide Branch  
WYMRP-000195  
07/23/2021  
4,093 acres at 07/14/2021 1144  
70% Containment



0 0.5 1 1.5 2  
Miles

- Dip Site
- Helispot
- Sling Site
- Stream Crossing
- Fence - Cut/Damaged
- ▭ Safety Zone
- ▭ 1\_4116 TFR
- Completed Dozer Line
- Completed Fuel Break
- Completed Hand Line
- Completed Road as Line
- Planned Fuel Break
- Planned Mixed Construction Line
- Planned Road as Line
- Access or Improved Road
- Other
- Fire Edge
- Contained Line
- Aerial Hazard
- ▭ Aerial Hazard Caution Area
- No Dip (Cutthroat Trout)
- Highways
- Routes
- Decommissioned Roads
- Trails
- Wildfire Daily Fire Perimeter
- Forest Boundary
- Wilderness
- ▭ Bureau of Land Management
- ▭ Private
- ▭ State
- ▭ State, County, City; Areas
- ▭ US Forest Service
- IR\_Point

Point Type	Point Name	Comments	Latitude (WGS84 DDM)	Longitude (WGS84 DDM)
Dip Site	Guard Dip		40° 06.438' N	106° 40.831' W
Dip Site	Hideaway Ranch Dip	Improved	40° 09.300' N	106° 43.931' W
Dip Site	Lost Elk Dip		40° 10.445' N	106° 45.346' W
Dip Site	Martin Dip	Improved	40° 08.500' N	106° 42.831' W
Dip Site	Muddy Dip	Improved. Toponas Rock Reservoir. taken by Ortega; state land trust	40° 05.990' N	106° 45.641' W
Drop Point	100		40° 11.266' N	106° 45.485' W
Drop Point	20		40° 07.988' N	106° 42.329' W
Drop Point	3		40° 09.497' N	106° 43.833' W
Drop Point	300	lowboys can fit; taken by Ortega	40° 07.111' N	106° 39.743' W
Drop Point	320	Drop point at division T/W break	40° 06.504' N	106° 41.189' W
Drop Point	330		40° 06.027' N	106° 41.498' W
Drop Point	350		40° 06.695' N	106° 42.984' W
Drop Point	40		40° 05.478' N	106° 48.421' W
Drop Point	50		40° 07.955' N	106° 48.113' W
Drop Point	60		40° 08.932' N	106° 48.196' W
Drop Point	80		40° 09.872' N	106° 48.331' W
Drop Point	95	Drop point across Lost Elk Ranch to access indirect line and hose	40° 10.582' N	106° 45.989' W
Fence - Cut/Damaged		Private property is to north	40° 09.865' N	106° 44.510' W
Helispot	1	Lost Elk Ranch. Medivac Site. Type 2 and 3.	40° 10.603' N	106° 45.128' W
Helispot	20	Type 3 only.	40° 07.300' N	106° 41.671' W
Helispot	3		40° 09.264' N	106° 46.004' W
Helispot	30	Meadow. Type 1, 2, and 3.	40° 05.642' N	106° 40.239' W
Helispot	35	Type 2 and 3.	40° 05.970' N	106° 41.521' W
Helispot	40	Type 2 and 3.	40° 07.283' N	106° 44.631' W
Helispot	5		40° 09.342' N	106° 45.091' W
Helispot	50	Type 3 only.	40° 09.491' N	106° 47.519' W
Helispot	55	Type 2 and 3. At DP-80.	40° 09.870' N	106° 48.364' W
Helispot	60	Type 2 and 3.	40° 10.327' N	106° 49.131' W
Helispot	70		40° 08.575' N	106° 46.718' W
Helispot	80	Nighttime extraction.	40° 16.314' N	106° 56.961' W
Safety Zone		For heavy equipment. Under power line.	40° 06.602' N	106° 43.094' W
Safety Zone			40° 09.317' N	106° 47.307' W
Safety Zone			40° 09.448' N	106° 45.113' W
Sling Site			40° 09.625' N	106° 47.187' W
Sling Site			40° 09.428' N	106° 47.366' W
Stream Crossing		On dozer line	40° 09.658' N	106° 44.673' W



RM Blue GISS CCT  
7/22/2021 1307  
Acres from WVA  
North American 1983 Datum  
Lat/Long Grid