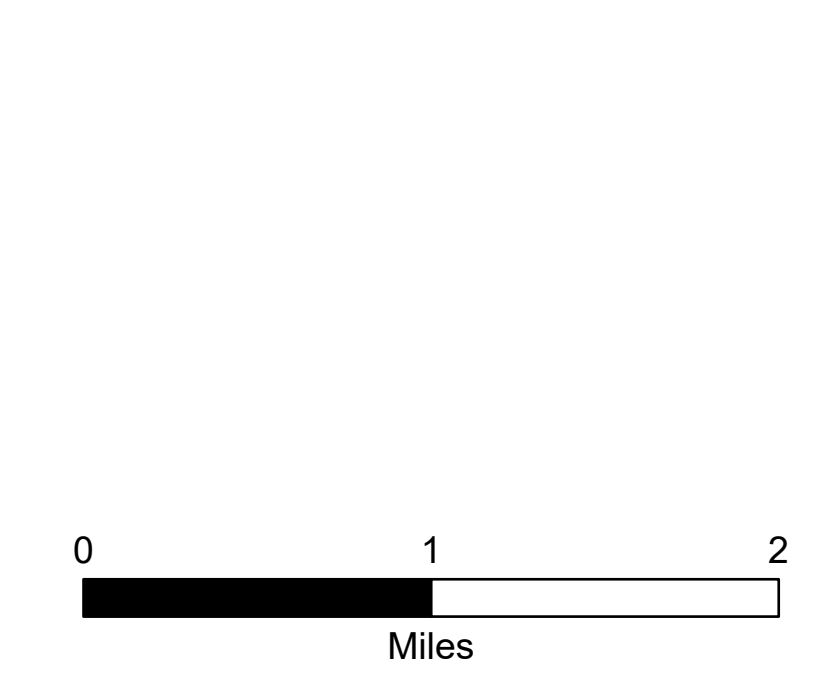
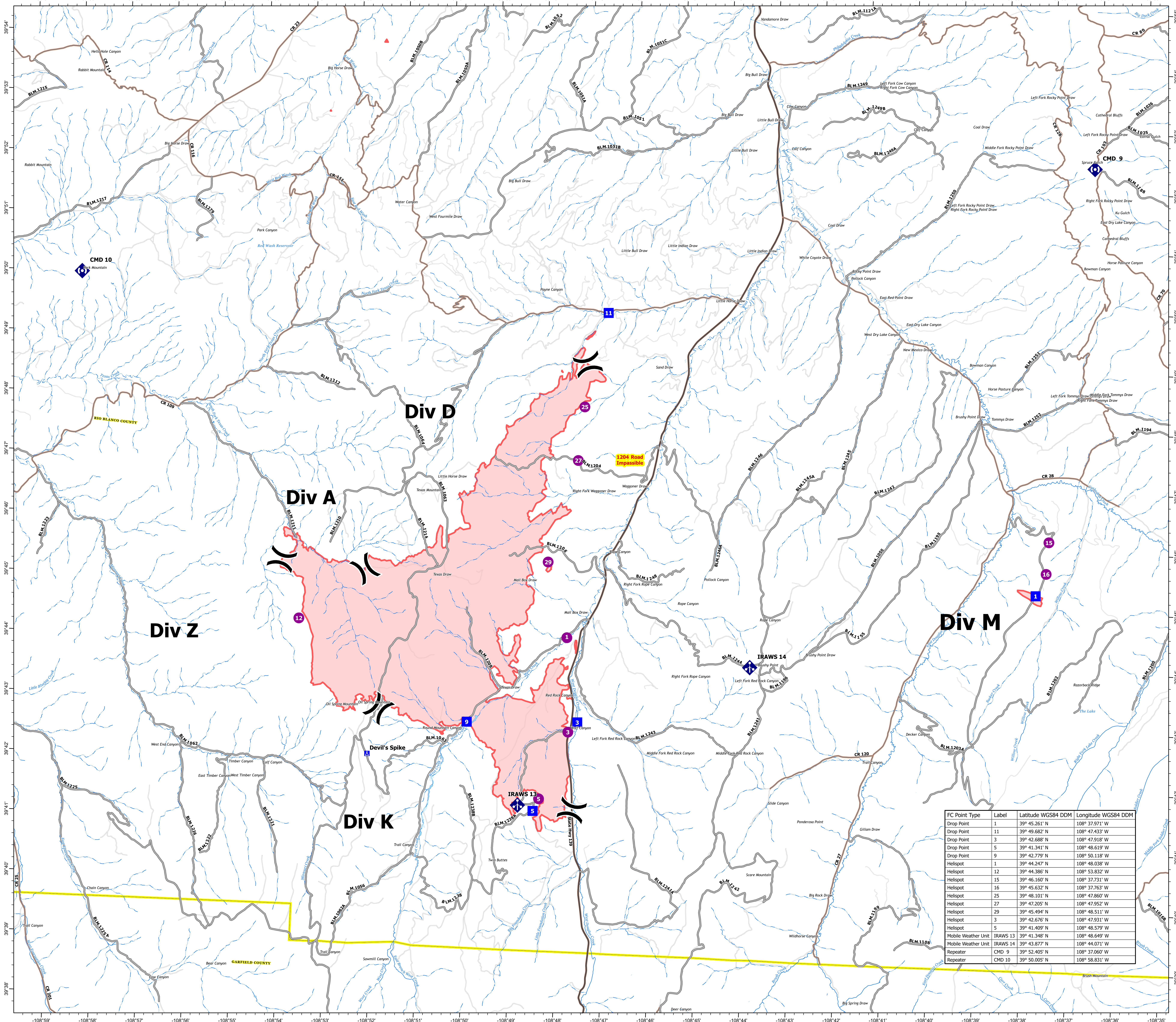




- (X) Division Break
- ⓧ Camp
- Air Operations
- Helispot
- Logistics
- Drop Point
- Communications
- ⓧ Mobile Weather Unit
- ⓧ Repeater
- ▭ Wildfire Daily Fire Perimeter
- ~ Perennial Stream
- ~ Intermittent Stream
- ☪ Lake
- BLM Road
- County Road
- State Road
- ▭ County Boundary



FC Point Type	Label	Latitude WGS84 DDM	Longitude WGS84 DDM
Drop Point	1	39° 45.261' N	108° 37.971' W
Drop Point	11	39° 49.682' N	108° 47.433' W
Drop Point	3	39° 42.688' N	108° 47.918' W
Drop Point	5	39° 41.341' N	108° 48.619' W
Drop Point	9	39° 42.779' N	108° 50.118' W
Helispot	1	39° 44.247' N	108° 48.038' W
Helispot	12	39° 44.386' N	108° 53.832' W
Helispot	15	39° 46.160' N	108° 37.731' W
Helispot	16	39° 45.632' N	108° 37.763' W
Helispot	25	39° 48.101' N	108° 47.860' W
Helispot	27	39° 47.205' N	108° 47.952' W
Helispot	29	39° 45.494' N	108° 48.511' W
Helispot	3	39° 42.676' N	108° 47.931' W
Helispot	5	39° 41.409' N	108° 48.579' W
Mobile Weather Unit	IRAWS 13	39° 41.348' N	108° 48.649' W
Mobile Weather Unit	IRAWS 14	39° 43.877' N	108° 44.071' W
Repeater	CMD 9	39° 52.405' N	108° 37.060' W
Repeater	CMD 10	39° 50.005' N	108° 58.831' W