

103°35'W 103°33.5'W 103°32'W 103°30.5'W 103°29'W 103°27.5'W 103°26'W 103°24.5'W 103°23'W 103°21.5'W 103°20'W 103°18.5'W

Transportation

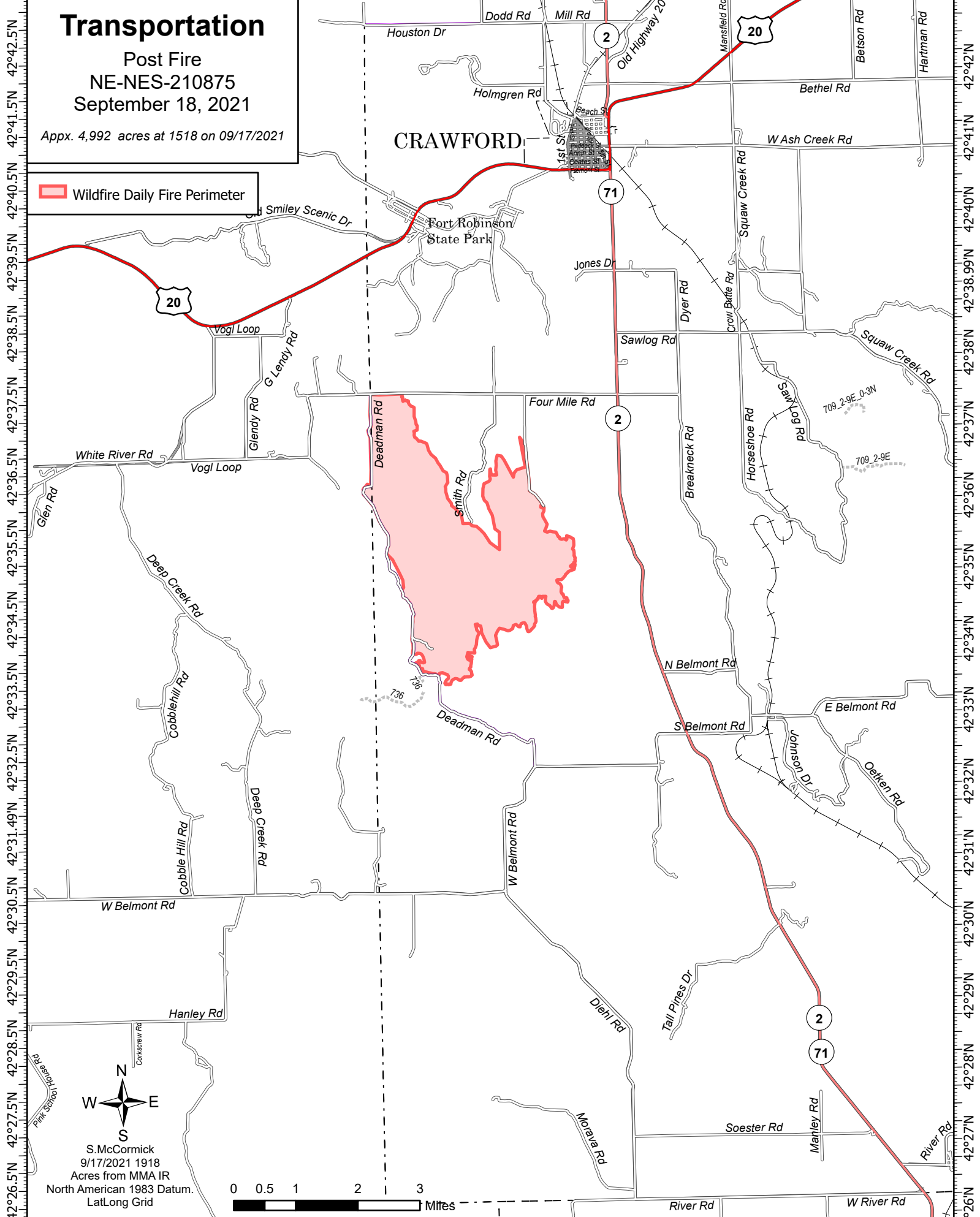
Post Fire
NE-NES-210875
September 18, 2021

Appx. 4,992 acres at 1518 on 09/17/2021

 Wildfire Daily Fire Perimeter

CRAWFORD

Fort Robinson
State Park



103°35'W 103°34'W 103°32.5'W 103°31'W 103°29.5'W 103°28'W 103°26.5'W 103°25'W 103°23.5'W 103°22'W 103°20.5'W 103°19'W

42°42.5'N 42°41.5'N 42°40.5'N 42°39.5'N 42°38.5'N 42°37.5'N 42°36.5'N 42°35.5'N 42°34.5'N 42°33.5'N 42°32.5'N 42°31.49'N 42°30.5'N 42°29.5'N 42°28.5'N 42°27.5'N 42°26.5'N

42°42.5'N 42°41'N 42°40'N 42°38.99'N 42°38'N 42°37'N 42°36'N 42°35'N 42°34'N 42°33'N 42°32'N 42°31'N 42°30'N 42°29'N 42°28'N 42°27'N 42°26'N

S. McCormick
9/17/2021 1918
Acres from MMA IR
North American 1983 Datum.
Lat/Long Grid

