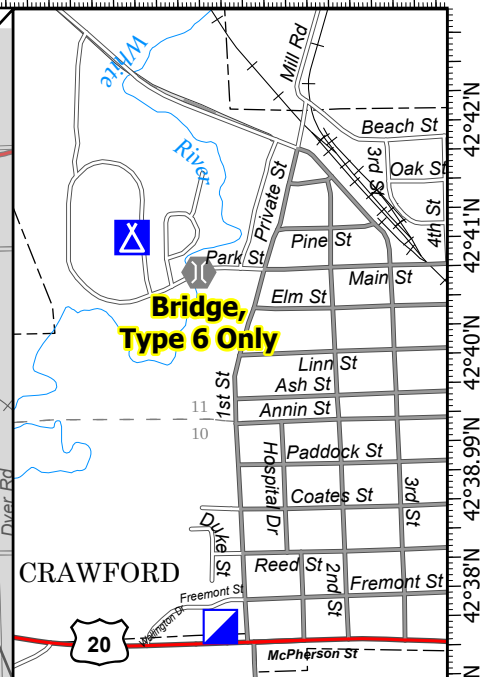
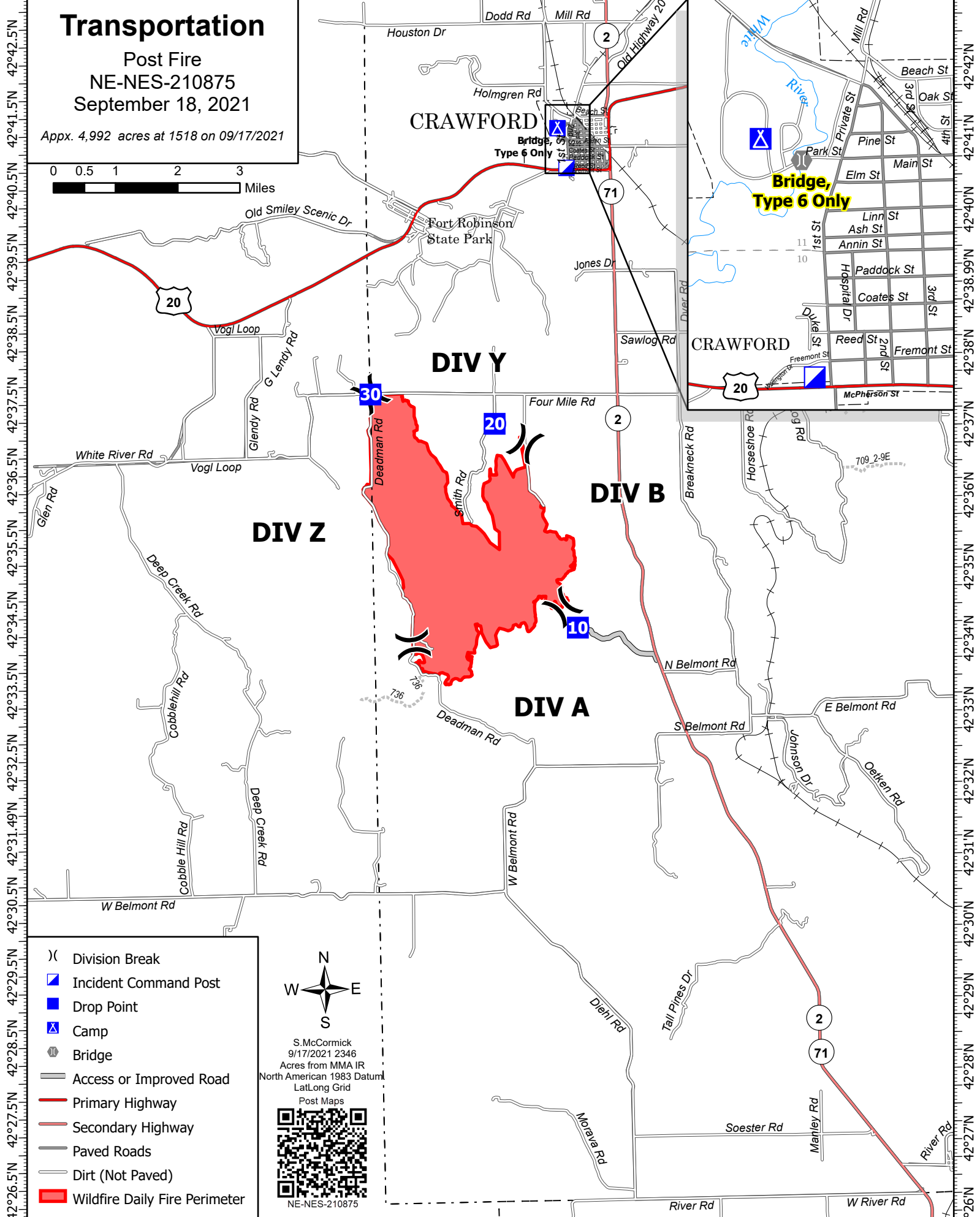
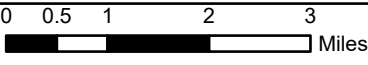


103°35'W 103°33.5'W 103°32'W 103°30.5'W 103°29'W 103°27.5'W 103°26'W 103°24.5'W 103°23'W 103°21.5'W 103°20'W 103°18.5'W

Transportation

Post Fire
NE-NES-210875
September 18, 2021

Appx. 4,992 acres at 1518 on 09/17/2021



- () Division Break
- ▣ Incident Command Post
- Drop Point
- ⊠ Camp
- ⊙ Bridge
- Access or Improved Road
- Primary Highway
- Secondary Highway
- Paved Roads
- Dirt (Not Paved)
- Wildfire Daily Fire Perimeter



S. McCormick
9/17/2021 2346
Acres from MMA IR
North American 1983 Datum
Lat/Long Grid
Post Maps



NE-NES-210875

103°35'W 103°34'W 103°32.5'W 103°31'W 103°29.5'W 103°28'W 103°26.5'W 103°25'W 103°23.5'W 103°22'W 103°20.5'W 103°19'W