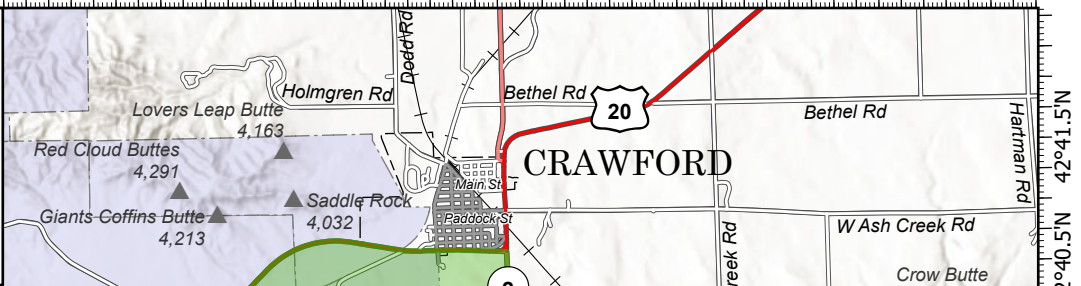
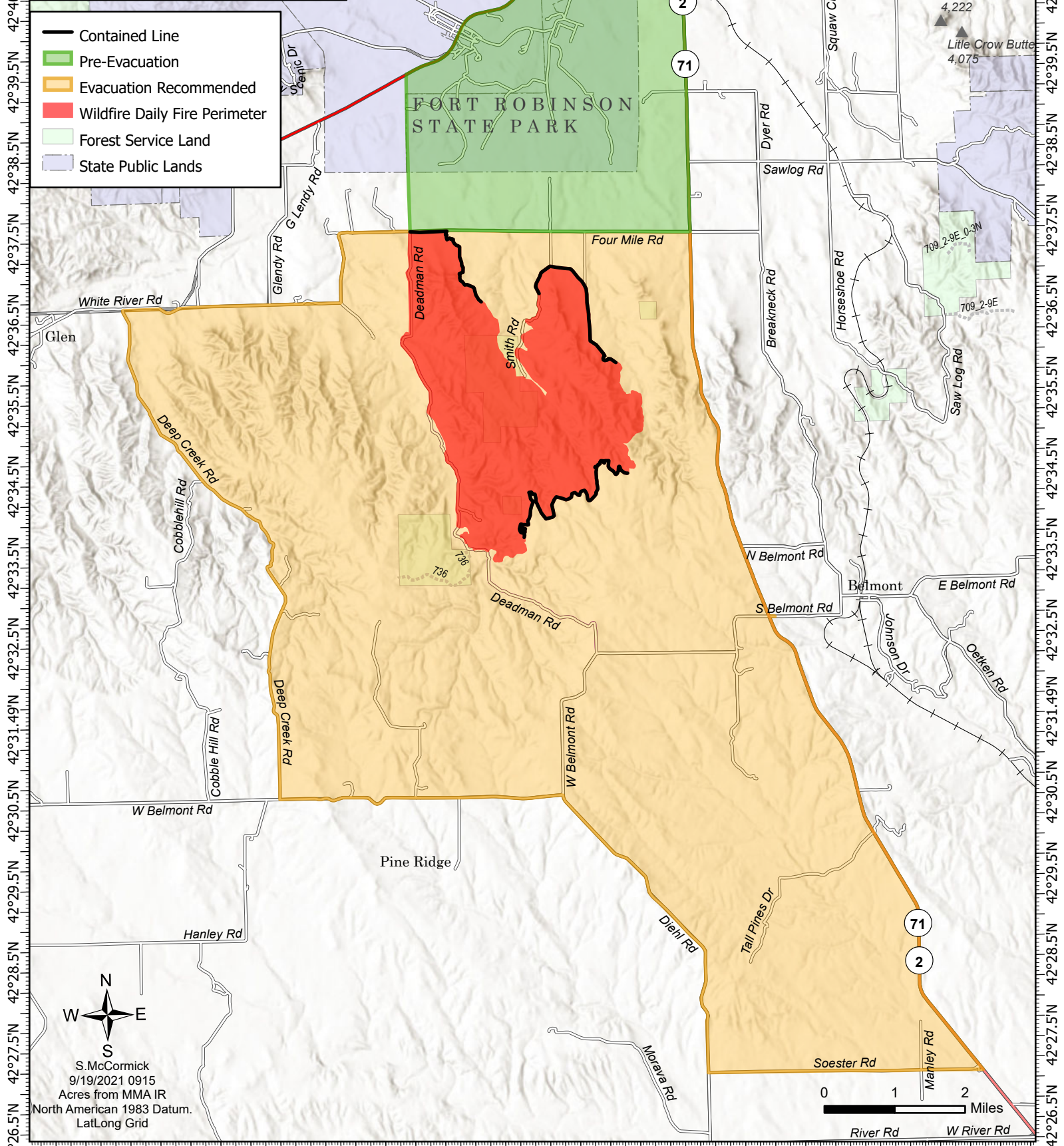


103°35'W 103°33.5'W 103°32'W 103°30.5'W 103°29'W 103°27.5'W 103°26'W 103°24.5'W 103°23'W 103°21.5'W 103°20'W 103°18.5'W

Public Information
Post Fire
NE-NES-210875
September 19, 2021
Appx. 5,444 acres at 1216 on 09/18/2021



- Contained Line
- Pre-Evacuation
- Evacuation Recommended
- Wildfire Daily Fire Perimeter
- Forest Service Land
- State Public Lands



103°35'W 103°33.5'W 103°32'W 103°30.5'W 103°29'W 103°27.5'W 103°26'W 103°24.5'W 103°23'W 103°21.5'W 103°20'W