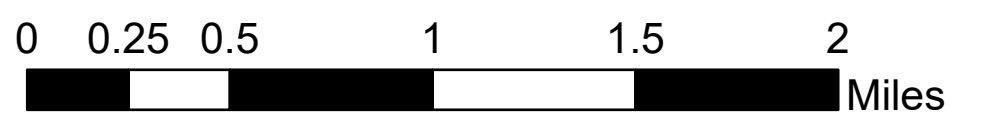


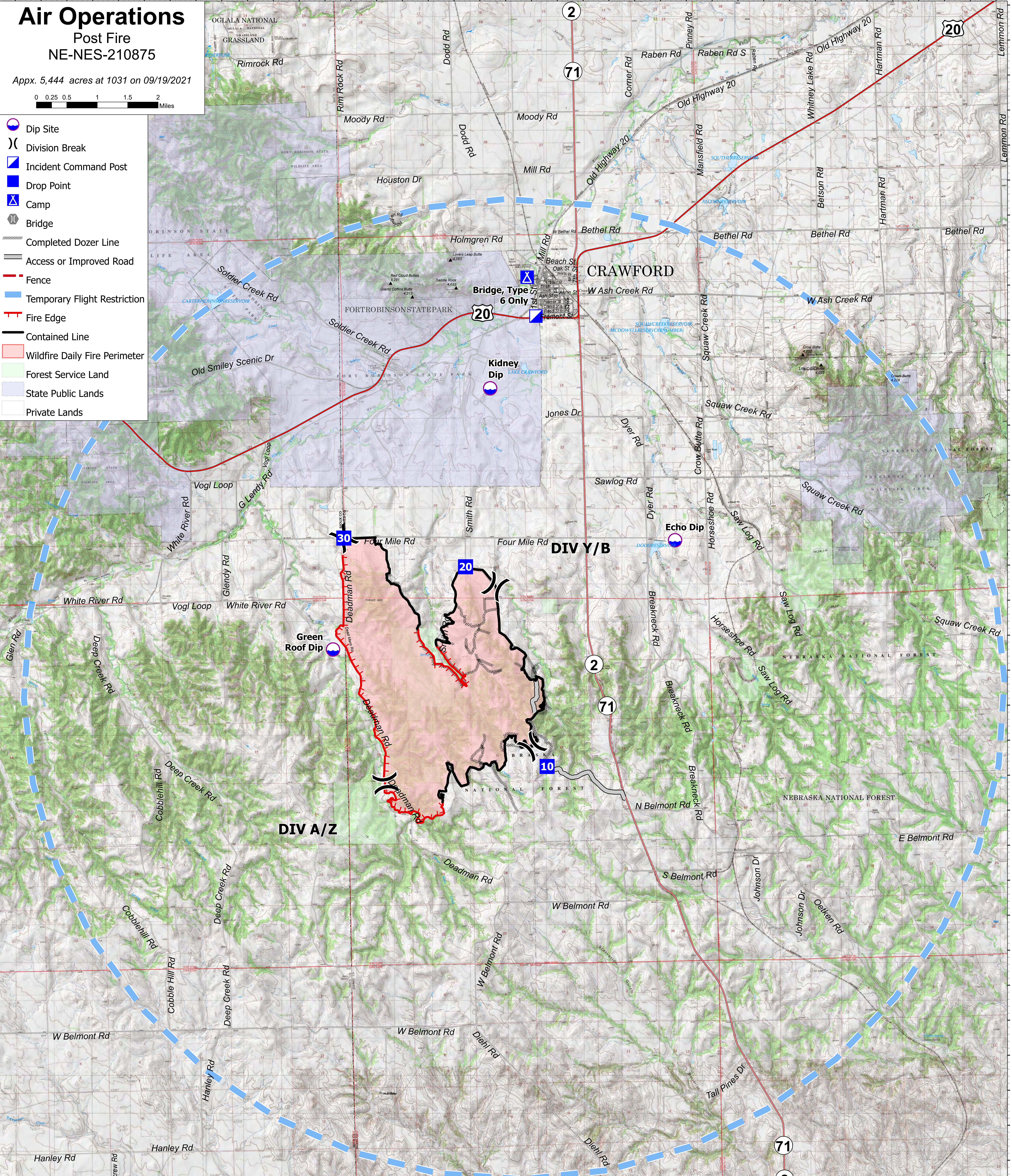
# Air Operations

Post Fire  
NE-NES-210875

Appx. 5,444 acres at 1031 on 09/19/2021



- Dip Site
- Division Break
- Incident Command Post
- Drop Point
- Camp
- Bridge
- Completed Dozer Line
- Access or Improved Road
- Fence
- Temporary Flight Restriction
- Fire Edge
- Contained Line
- Wildfire Daily Fire Perimeter
- Forest Service Land
- State Public Lands
- Private Lands



Feature	Category	Label	LatWGS84_DDM	LongWGS84_DDM
Camp			42° 41.248' N	103° 25.186' W
Dip Site		Echo Dip	42° 37.450' N	103° 22.420' W
Dip Site		Green Roof Dip	42° 35.980' N	103° 29.070' W
Dip Site		Kidney Dip	42° 39.670' N	103° 25.940' W
Drop Point		10	42° 34.254' N	103° 24.976' W
Drop Point		20	42° 37.128' N	103° 26.481' W
Drop Point		30	42° 37.569' N	103° 28.824' W
Incident Command Post			42° 40.690' N	103° 25.029' W



Post Maps  
S. McCormick  
9/19/2021 2019  
Acres from MMA IR  
North American 1983 Datum  
Lat/Long Grid

NE-NES-210875