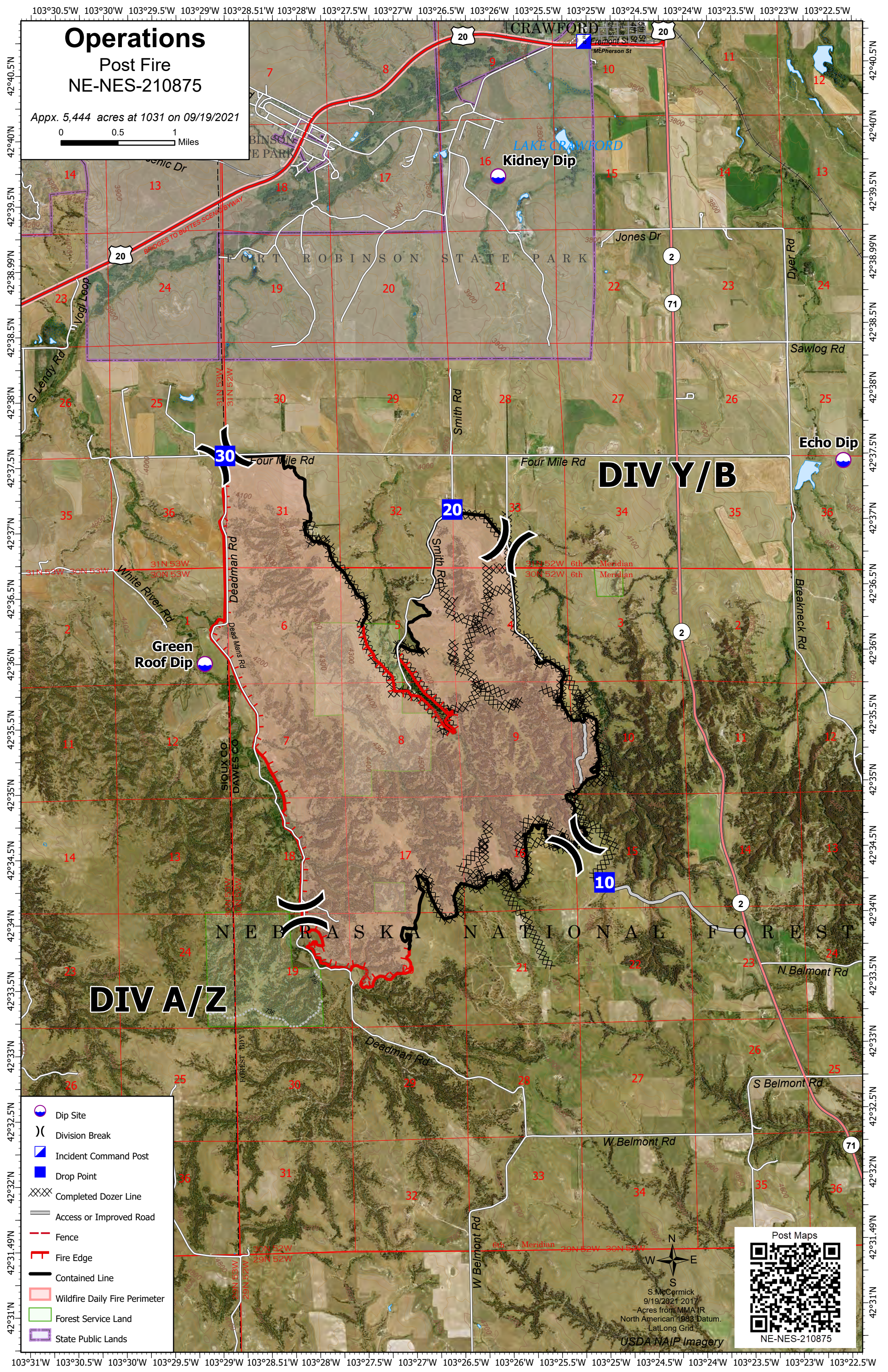
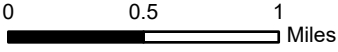


# Operations

## Post Fire NE-NES-210875

Appx. 5,444 acres at 1031 on 09/19/2021



### DIV Y/B

### DIV A/Z

- Dip Site
- Division Break
- Incident Command Post
- Drop Point
- Completed Dozer Line
- Access or Improved Road
- Fence
- Fire Edge
- Contained Line
- Wildfire Daily Fire Perimeter
- Forest Service Land
- State Public Lands



S. McCormick  
9/19/2021 2017  
Acres from MMA IR  
North American 1983 Datum.  
Lat/Long Grid  
USDA NAIP Imagery

Post Maps

NE-NES-210875