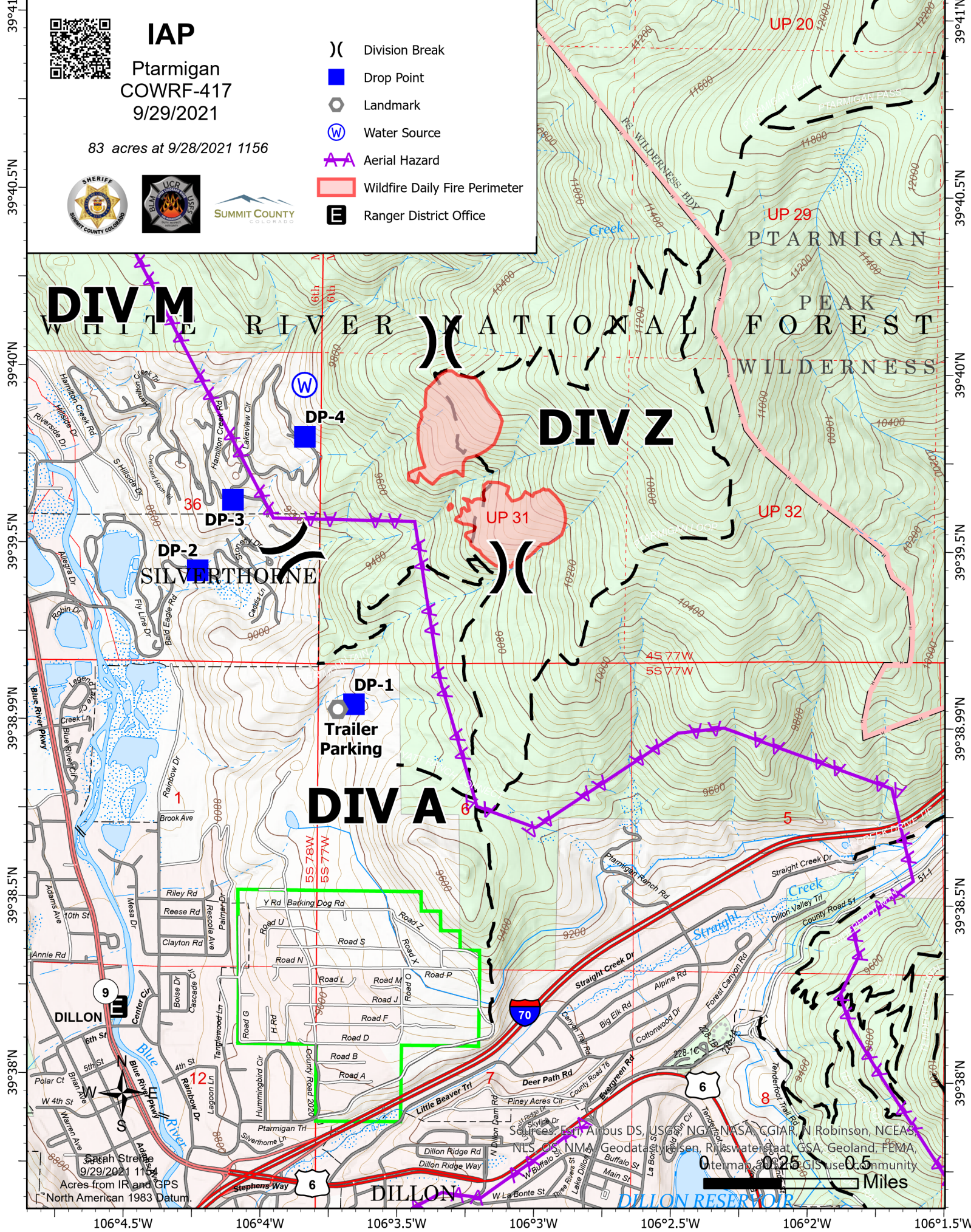


106°4.5'W 106°4'W 106°3.5'W 106°3'W 106°2.5'W 106°2'W



IAP

Ptarmigan
COWRF-417
9/29/2021

83 acres at 9/28/2021 1156



- () Division Break
- Drop Point
- Landmark
- (W) Water Source
- ▲▲ Aerial Hazard
- ▬ Wildfire Daily Fire Perimeter
- ⓔ Ranger District Office

DIVISION WHITE RIVER NATIONAL FOREST

DIV Z

DIV A

SILVERTHORNE

PTARMIGAN PEAK WILDERNESS

39°41'N
39°40.5'N
39°40'N
39°39.5'N
39°38.99'N
39°38.5'N
39°38'N

39°41'N
39°40.5'N
39°40'N
39°39.5'N
39°38.99'N
39°38.5'N
39°38'N

Acres from IR and GPS
9/29/2021 1156
North American 1983 Datum.

Sources: Esri, Airbus DS, USGS, NGA, NASA, CGIAR, N Robinson, NCEAS, NLS, NMA, Geodatavisen, Rijkswaterstaat, GSA, Geoland, FEMA, Intermap, iTopo, GIS user community

0 0.25 0.5 Miles