

106°5'W 106°4.5'W 106°4'W 106°3.5'W 106°3'W 106°2.5'W 106°2'W

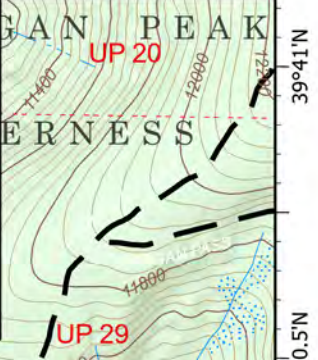
39°41'N 39°40.5'N 39°40'N 39°39.5'N 39°38.99'N 39°38.5'N 39°38'N



**IAP**  
Ptarmigan  
COWRF-417  
10/5/2021  
86 acres at 10/1/2021 1200



- Dip Site
- Helispot
- Division Break
- Medical
- Drop Point
- Landmark
- Water Source
- Other
- Aerial Hazard
- Fire Edge
- Contained Line
- Wildfire Daily Fire Perimeter
- Ranger District Office



**DIV M**

WHITE RIVER NATIONAL FOREST

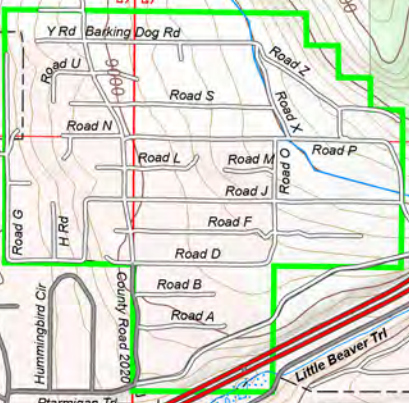
SILVERTHORNE

**DIV A**

Type 2 Dip

Trailer Parking

Type 3 Dip



Sarah Steinhilber  
10/4/2021 1859  
9299 Acres from IR and 315'S  
North American 1983 Datum.

0.25 0.5 Miles

106°5'W 106°4.5'W 106°4'W 106°3.5'W 106°3'W 106°2.5'W 106°2'W