

106°5'W 106°4.5'W 106°4'W 106°3.5'W 106°3'W 106°2.5'W 106°2'W

39°41'N 39°40.5'N 39°40'N 39°39.5'N 39°38.99'N 39°38.5'N 39°38'N

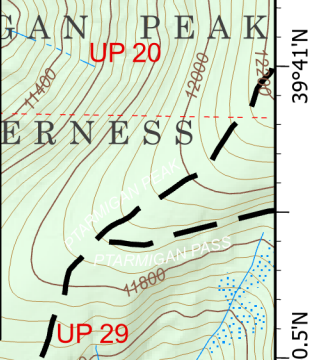


**IAP**  
Ptarmigan  
COWRF-417  
10/6/2021

86 acres at 10/1/2021 1200



	Dip Site		Completed Hand Line
	Helispot		Other
	Division Break		Aerial Hazard
	Medical		Fire Edge
	Drop Point		Contained Line
	Landmark		Wildfire Daily Fire Perimeter
	Water Source		Ranger District Office



**DIV M**

WHITE RIVER NATIONAL FOREST

SILVERTHORNE

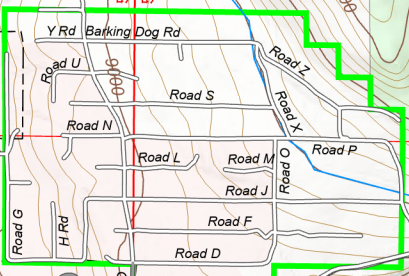
**DIV A**

Type 2 Dip

Trailer Parking

BLUE RIVER RANCH LAKES

**DILLON**



Sarah Streib  
10/5/2021 2023  
North American 1983 Datum.

0.25 Miles

106°5'W 106°4.5'W 106°4'W 106°3.5'W 106°3'W 106°2.5'W 106°2'W