

# Air Operations

Robinson  
WYHPD-210153  
6/17/2021

1038 acres at 6/14/2021 1630  
64% Containment

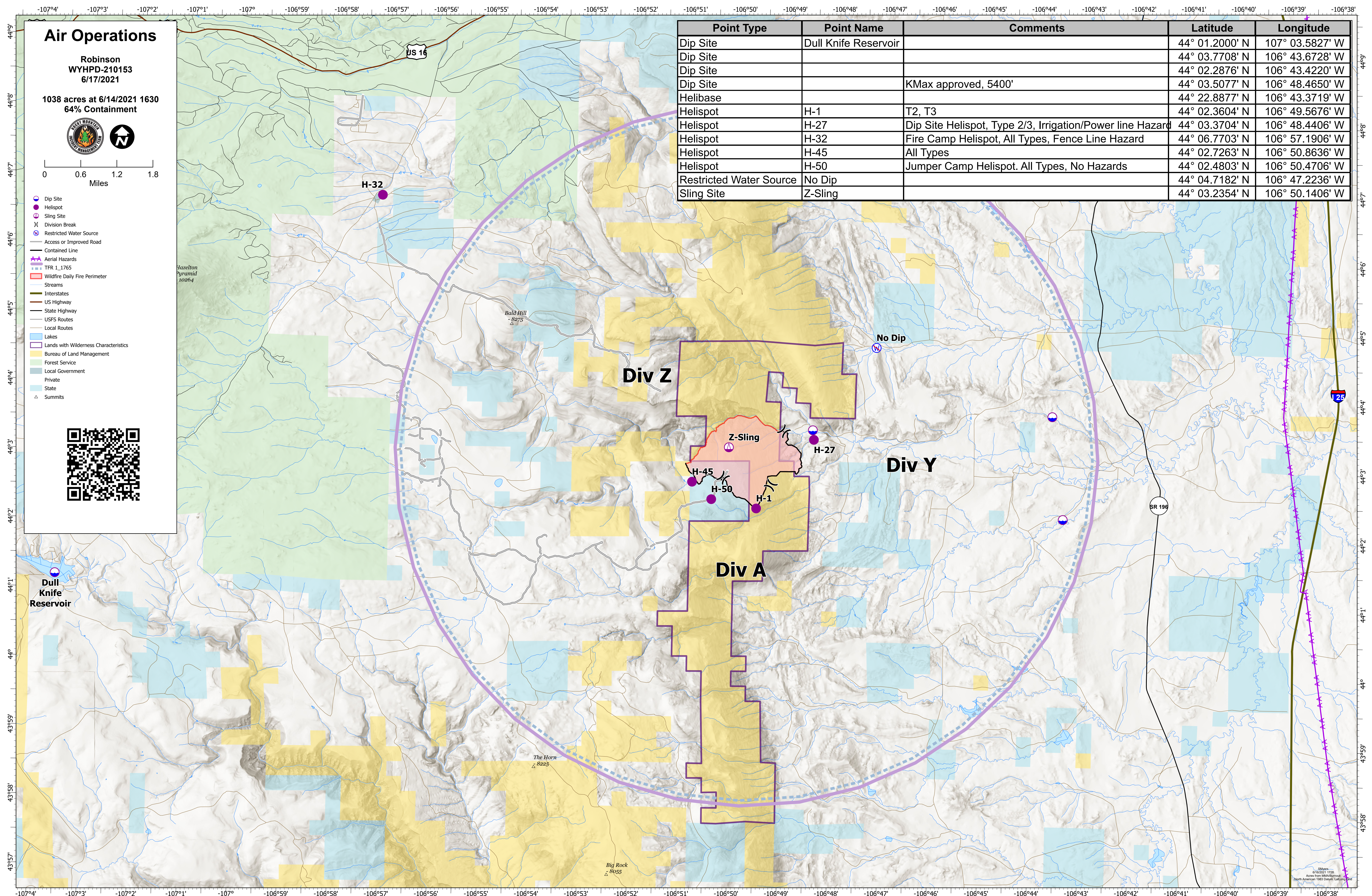


0 0.6 1.2 1.8  
Miles

- Dip Site
- Helispot
- Sling Site
- X Division Break
- ⊗ Restricted Water Source
- Access or Improved Road
- Contained Line
- Aerial Hazards
- TFR 1\_1765
- Wildfire Daily Fire Perimeter
- Streams
- Interstates
- US Highway
- State Highway
- USFS Routes
- Local Routes
- Lakes
- Lands with Wilderness Characteristics
- Bureau of Land Management
- Forest Service
- Local Government
- Private
- State
- ▲ Summits



Point Type	Point Name	Comments	Latitude	Longitude
Dip Site	Dull Knife Reservoir		44° 01.2000' N	107° 03.5827' W
Dip Site			44° 03.7708' N	106° 43.6728' W
Dip Site			44° 02.2876' N	106° 43.4220' W
Dip Site		KMax approved, 5400'	44° 03.5077' N	106° 48.4650' W
Helibase			44° 22.8877' N	106° 43.3719' W
Helispot	H-1	T2, T3	44° 02.3604' N	106° 49.5676' W
Helispot	H-27	Dip Site Helispot, Type 2/3, Irrigation/Power line Hazard	44° 03.3704' N	106° 48.4406' W
Helispot	H-32	Fire Camp Helispot, All Types, Fence Line Hazard	44° 06.7703' N	106° 57.1906' W
Helispot	H-45	All Types	44° 02.7263' N	106° 50.8636' W
Helispot	H-50	Jumper Camp Helispot. All Types, No Hazards	44° 02.4803' N	106° 50.4706' W
Restricted Water Source	No Dip		44° 04.7182' N	106° 47.2236' W
Sling Site	Z-Sling		44° 03.2354' N	106° 50.1406' W



SMYERS  
© 1983/2021 1128  
Aerial from Max/McGraw-Hill  
North American 1983 Datum, LER 00000