

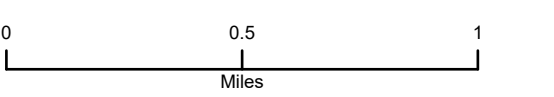
Air Operations

Sand Creek

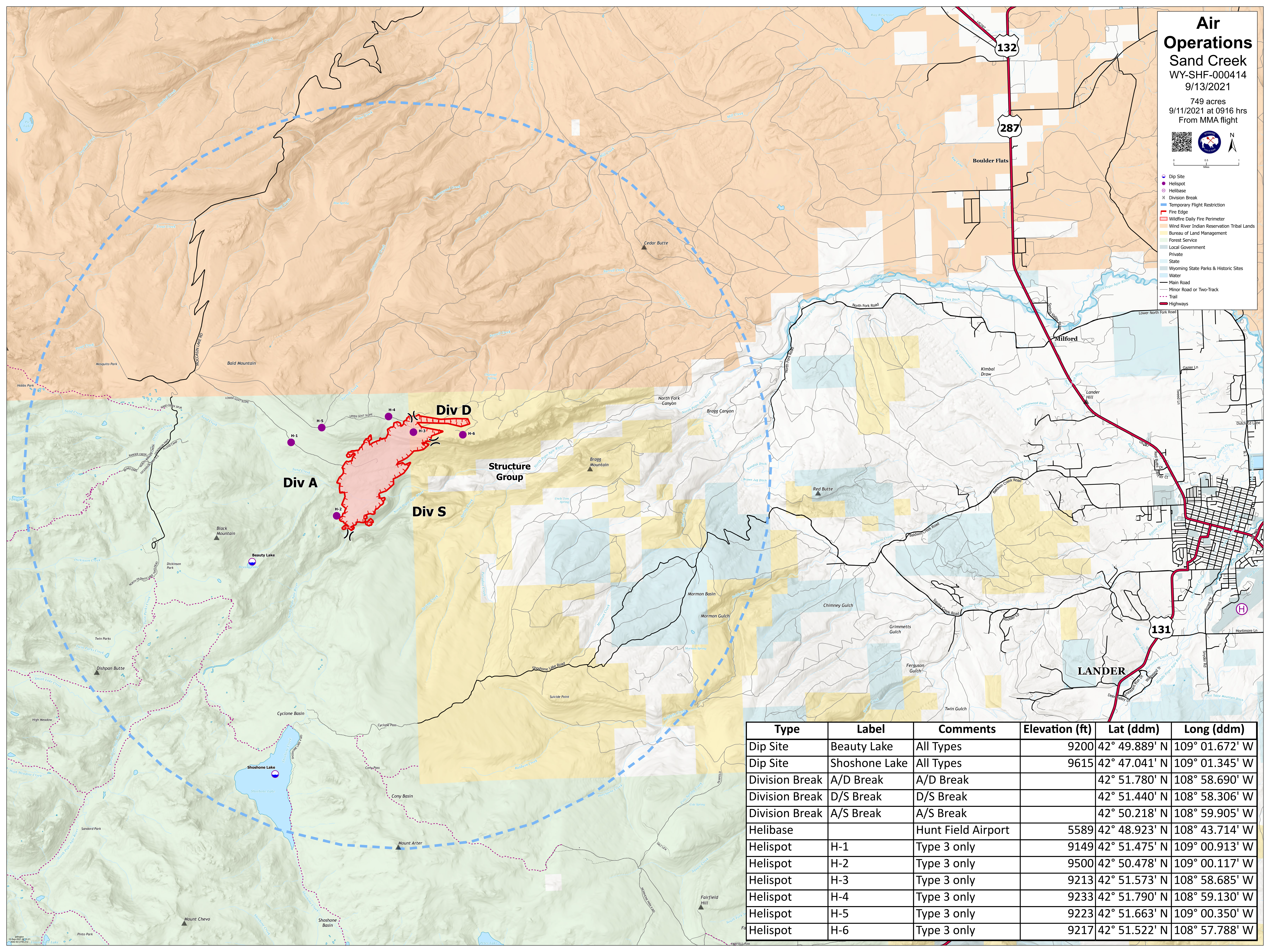
WY-SHF-000414

9/13/2021

749 acres
9/11/2021 at 0916 hrs
From MMA flight



- Dip Site
- Helispot
- ⊗ Helibase
- X Division Break
- Temporary Flight Restriction
- Fire Edge
- ▭ Wildfire Daily Fire Perimeter
- ▭ Wind River Indian Reservation Tribal Lands
- ▭ Bureau of Land Management
- ▭ Forest Service
- ▭ Local Government
- ▭ Private
- ▭ State
- ▭ Wyoming State Parks & Historic Sites
- ▭ Water
- Main Road
- Minor Road or Two-Track
- - - Trail
- Highways



Type	Label	Comments	Elevation (ft)	Lat (ddm)	Long (ddm)
Dip Site	Beauty Lake	All Types	9200	42° 49.889' N	109° 01.672' W
Dip Site	Shoshone Lake	All Types	9615	42° 47.041' N	109° 01.345' W
Division Break	A/D Break	A/D Break		42° 51.780' N	108° 58.690' W
Division Break	D/S Break	D/S Break		42° 51.440' N	108° 58.306' W
Division Break	A/S Break	A/S Break		42° 50.218' N	108° 59.905' W
Helibase		Hunt Field Airport	5589	42° 48.923' N	108° 43.714' W
Helispot	H-1	Type 3 only	9149	42° 51.475' N	109° 00.913' W
Helispot	H-2	Type 3 only	9500	42° 50.478' N	109° 00.117' W
Helispot	H-3	Type 3 only	9213	42° 51.573' N	108° 58.685' W
Helispot	H-4	Type 3 only	9233	42° 51.790' N	108° 59.130' W
Helispot	H-5	Type 3 only	9223	42° 51.663' N	109° 00.350' W
Helispot	H-6	Type 3 only	9217	42° 51.522' N	108° 57.788' W