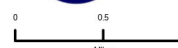


# Public Information

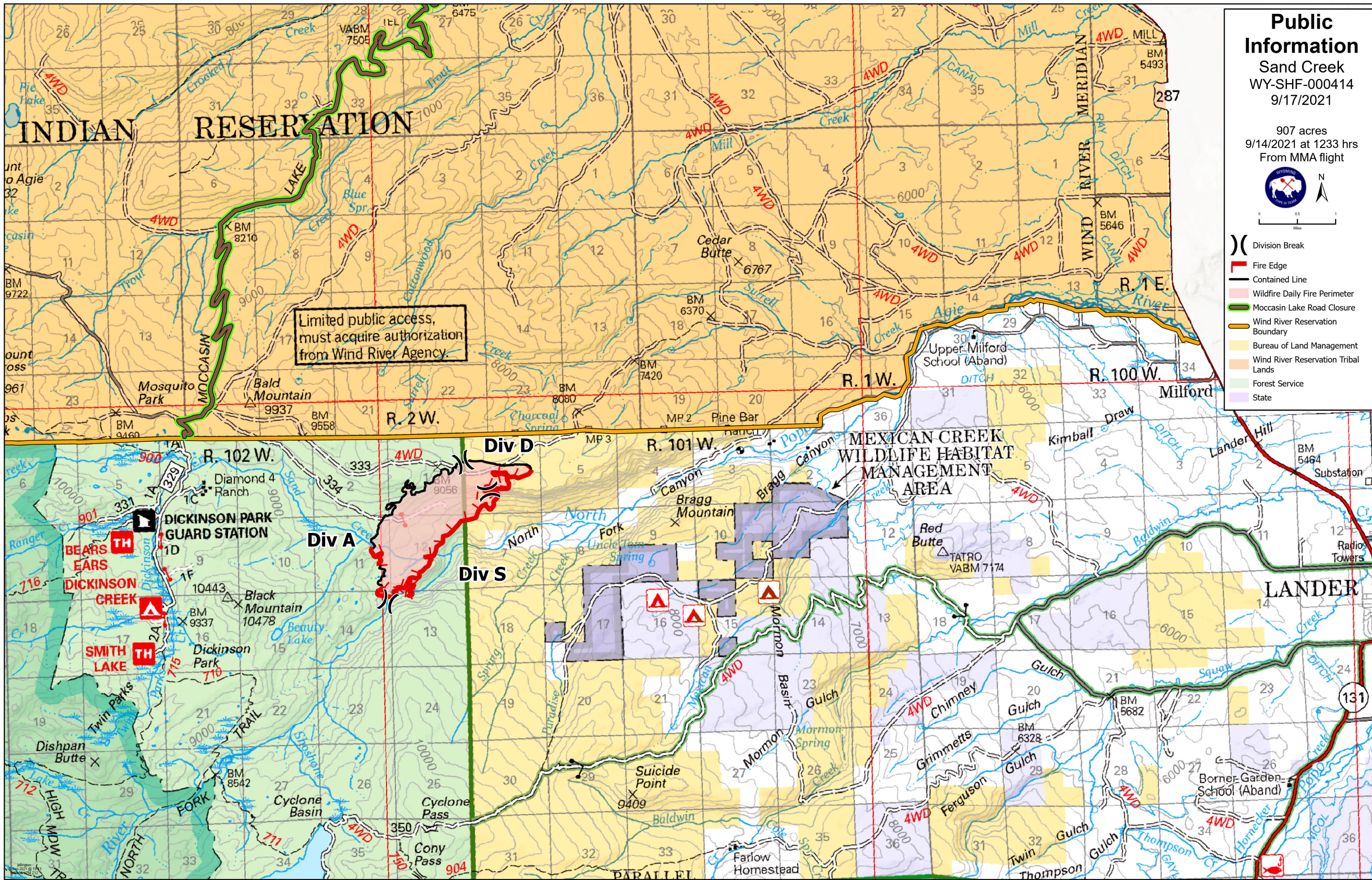
## Sand Creek

WY-SHF-000414  
9/17/2021

907 acres  
9/14/2021 at 1233 hrs  
From MMA flight



- ( ) Division Break
- Fire Edge
- Contained Line
- Wildfire Daily Fire Perimeter
- Moccasin Lake Road Closure
- Wind River Reservation Boundary
- Bureau of Land Management
- Wind River Reservation Tribal Lands
- Forest Service
- State



Limited public access,  
must acquire authorization  
from Wind River Agency.