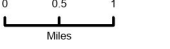


Pilot Map

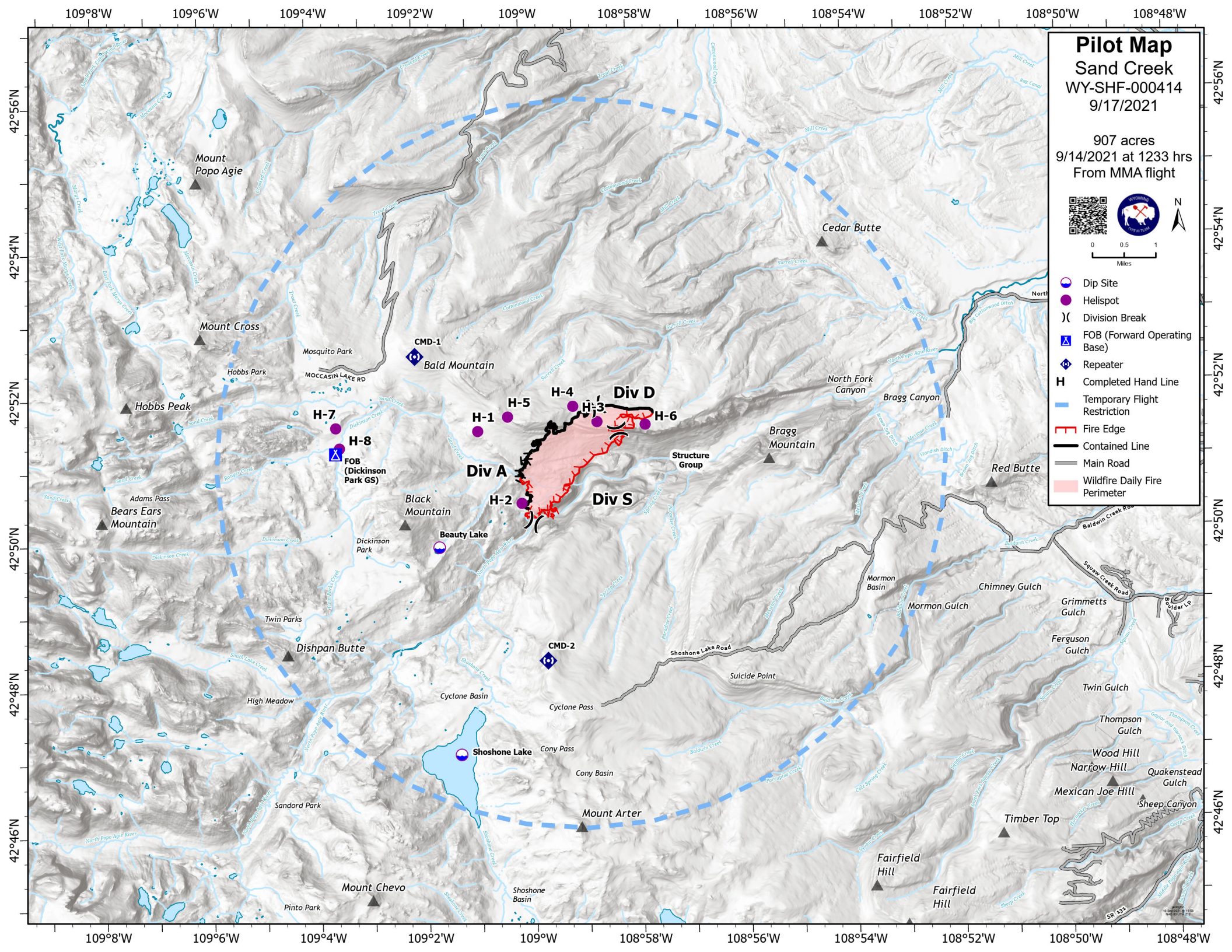
Sand Creek

WY-SHF-000414
9/17/2021

907 acres
9/14/2021 at 1233 hrs
From MMA flight



- Dip Site
- Helispot
- Division Break
- FOB (Forward Operating Base)
- Repeater
- Completed Hand Line
- Temporary Flight Restriction
- Fire Edge
- Contained Line
- Main Road
- Wildfire Daily Fire Perimeter



Type	Label	Comments	Elevation (ft)	Lat (ddm)	Long (ddm)
Dip Site	Beauty Lake	All Types	9200	42° 49.889' N	109° 01.672' W
Dip Site	Shoshone Lake	All Types	9615	42° 47.041' N	109° 01.345' W
Division Break	A/D Break	A/D Break		42° 51.780' N	108° 58.690' W
Division Break	D/S Break	D/S Break		42° 51.440' N	108° 58.306' W
Division Break	A/S Break	A/S Break		42° 50.218' N	108° 59.905' W
Helibase	Helibase	Hunt Field Airport	5589	42° 48.923' N	108° 43.714' W
Helispot	H-1	Type 3 only	9149	42° 51.475' N	109° 00.913' W
Helispot	H-2	Type 3 only	9500	42° 50.478' N	109° 00.117' W
Helispot	H-3	Type 3 only	9213	42° 51.573' N	108° 58.685' W
Helispot	H-4	Type 3 only	9233	42° 51.790' N	108° 59.130' W
Helispot	H-5	Type 3 only	9223	42° 51.663' N	109° 00.350' W
Helispot	H-6	Type 3 only	9217	42° 51.522' N	108° 57.788' W
Helispot	H-7	All Types	9275	42° 51.557' N	109° 03.560' W
Helispot	H-8	All Types	9485	42° 51.278' N	109° 03.498' W
Repeater	CMD-1	Bald Mountain	9700	42° 52.517' N	109° 02.058' W
Repeater	CMD-2		10100	42° 48.305' N	108° 59.695' W