

Air Operations

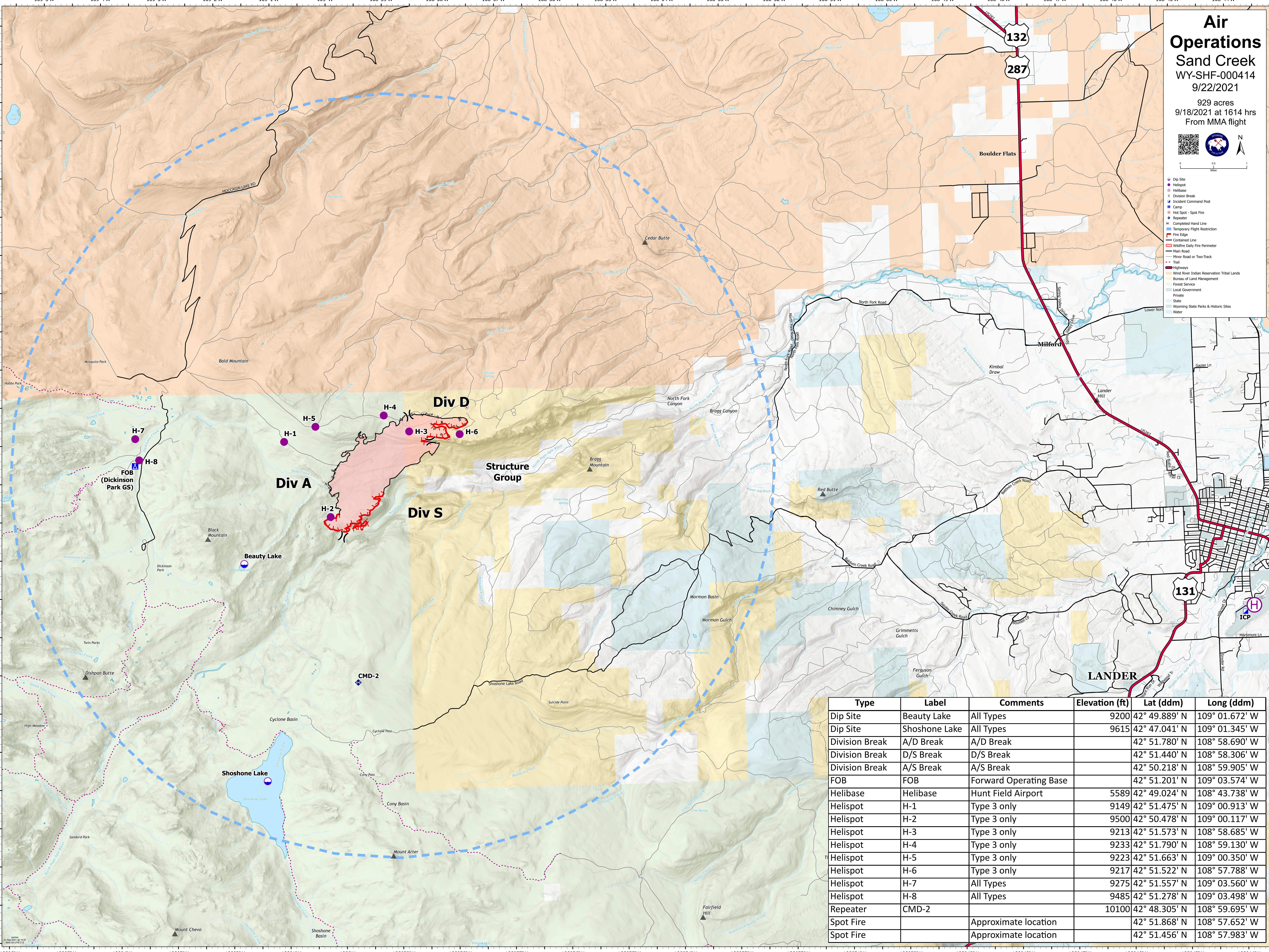
Sand Creek

WY-SHF-000414
9/22/2021

929 acres
9/18/2021 at 1614 hrs
From MMA flight



- Dip Site
- Helibase
- ⊗ Helispot
- ⊘ Division Break
- ⊚ Incident Command Post
- ⊛ Camp
- ⊜ Hot Spot - Spot Fire
- ⊝ Repeater
- ⊞ Completed Hand Line
- ⊟ Temporary Flight Restriction
- ⊠ Fire Edge
- ⊡ Contained Line
- ⊢ Wildfire Daily Fire Perimeter
- ⊣ Main Road
- ⊤ Minor Road or Two-Track
- ⊥ Trail
- ⊦ Highways
- ⊧ Wind River Indian Reservation Tribal Lands
- ⊨ Bureau of Land Management
- ⊩ Forest Service
- ⊪ Local Government
- ⊫ State
- ⊬ Private
- ⊭ Wyoming State Parks & Historic Sites
- ⊮ Water



Type	Label	Comments	Elevation (ft)	Lat (ddm)	Long (ddm)
Dip Site	Beauty Lake	All Types	9200	42° 49.889' N	109° 01.672' W
Dip Site	Shoshone Lake	All Types	9615	42° 47.041' N	109° 01.345' W
Division Break	A/D Break	A/D Break		42° 51.780' N	108° 58.690' W
Division Break	D/S Break	D/S Break		42° 51.440' N	108° 58.306' W
Division Break	A/S Break	A/S Break		42° 50.218' N	108° 59.905' W
FOB	FOB	Forward Operating Base		42° 51.201' N	109° 03.574' W
Helibase	Helibase	Hunt Field Airport	5589	42° 49.024' N	108° 43.738' W
Helispot	H-1	Type 3 only	9149	42° 51.475' N	109° 00.913' W
Helispot	H-2	Type 3 only	9500	42° 50.478' N	109° 00.117' W
Helispot	H-3	Type 3 only	9213	42° 51.573' N	108° 58.685' W
Helispot	H-4	Type 3 only	9233	42° 51.790' N	108° 59.130' W
Helispot	H-5	Type 3 only	9223	42° 51.663' N	109° 00.350' W
Helispot	H-6	Type 3 only	9217	42° 51.522' N	108° 57.788' W
Helispot	H-7	All Types	9275	42° 51.557' N	109° 03.560' W
Helispot	H-8	All Types	9485	42° 51.278' N	109° 03.498' W
Repeater	CMD-2		10100	42° 48.305' N	108° 59.695' W
Spot Fire		Approximate location		42° 51.868' N	108° 57.652' W
Spot Fire		Approximate location		42° 51.456' N	108° 57.983' W