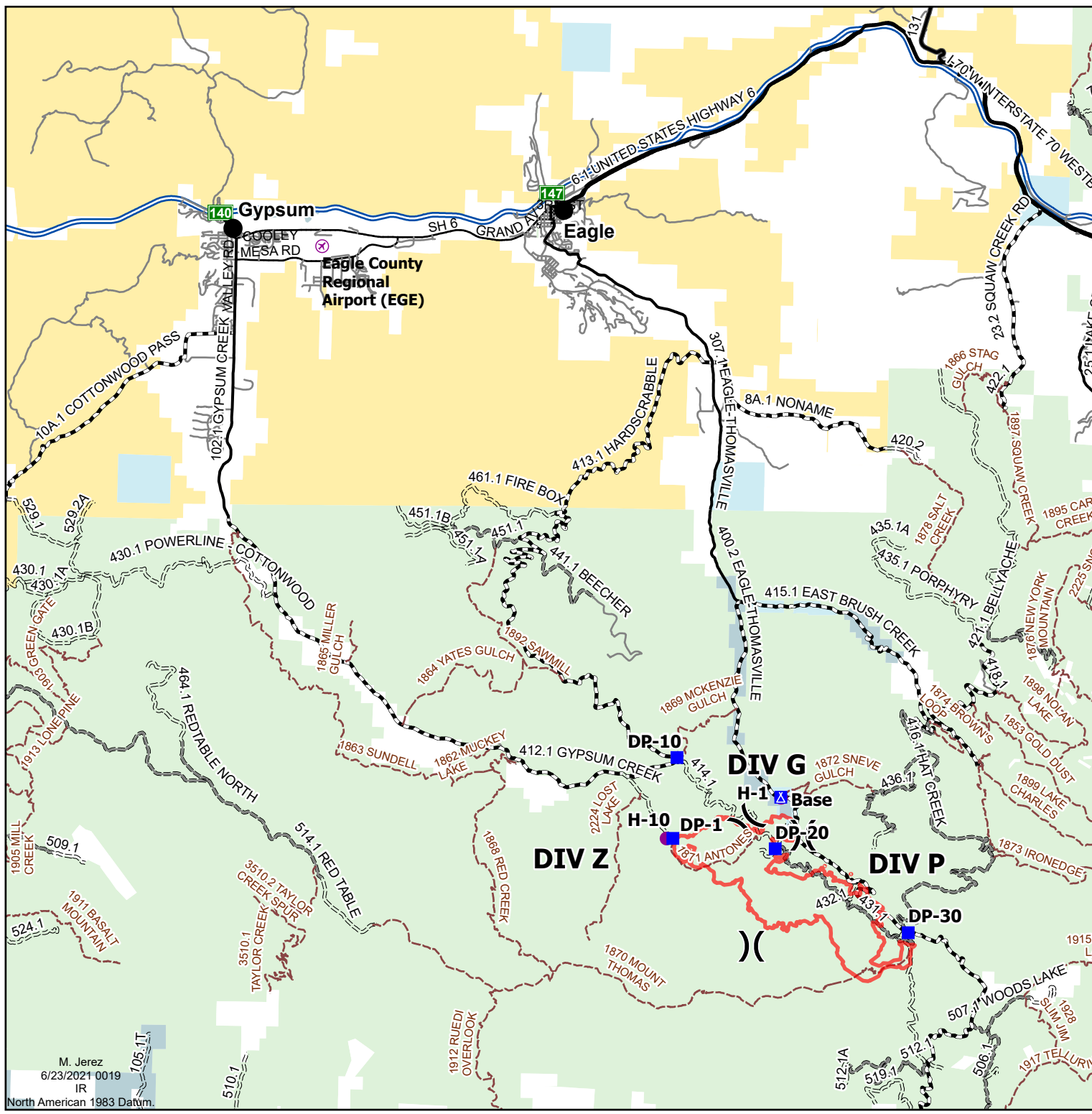


Transportation

Sylvan
CO-WRF-210187
06/23/21



Estimated 3583 acres from IR
06/22/2021 at 2037 hrs



- Airstrip or Airport
- Helispot
- Division Break
- Drop Point
- Camp
- Wildfire Daily Fire Perimeter
- WRNF Trails
- High Clearance Vehicles
- Suitable for Passenger Cars
- Moderate/High Degree of User Comfort
- Local Roads
- Major Roads
- State Highways
- U.S. Highways
- Interstate
- Forest Service
- Bureau of Land Management
- Private
- State, County, City; Areas
- State