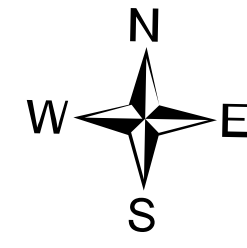
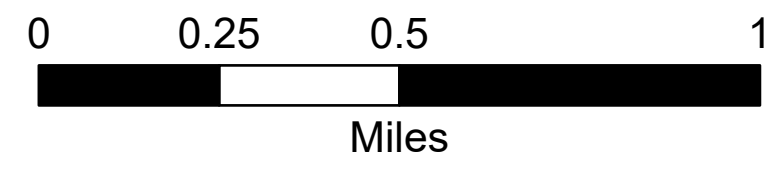
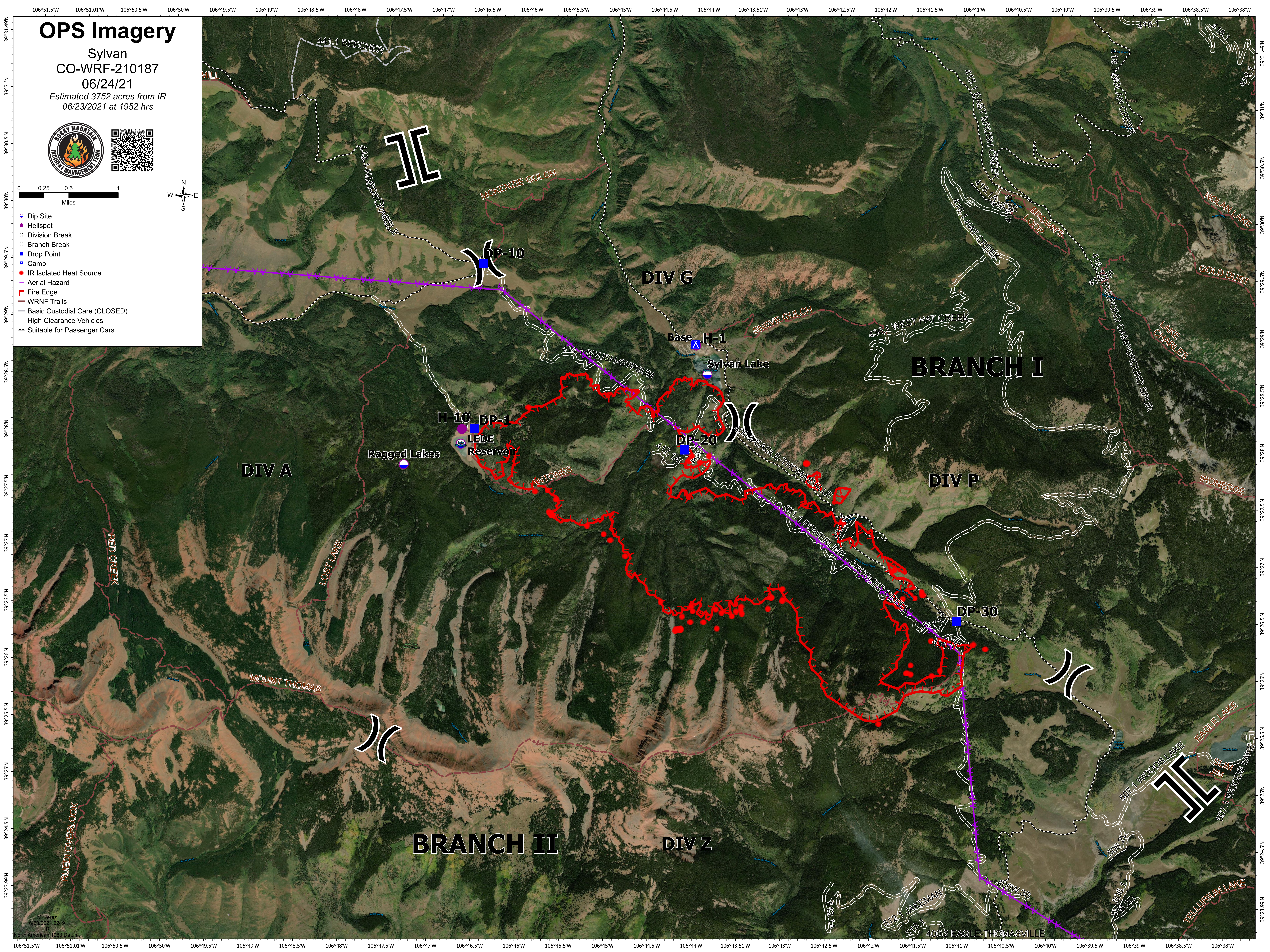


# OPS Imagery

Sylvan  
CO-WRF-210187  
06/24/21  
Estimated 3752 acres from IR  
06/23/2021 at 1952 hrs



- Dip Site
- Helispot
- Division Break
- Branch Break
- Drop Point
- Camp
- IR Isolated Heat Source
- Aerial Hazard
- Fire Edge
- WRNF Trails
- Basic Custodial Care (CLOSED)  
High Clearance Vehicles
- Suitable for Passenger Cars



Map by J. J. J. 10/23/2021 2:24:59 PM  
North American 1983 Datum