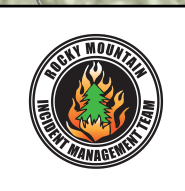
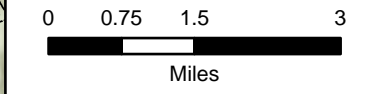


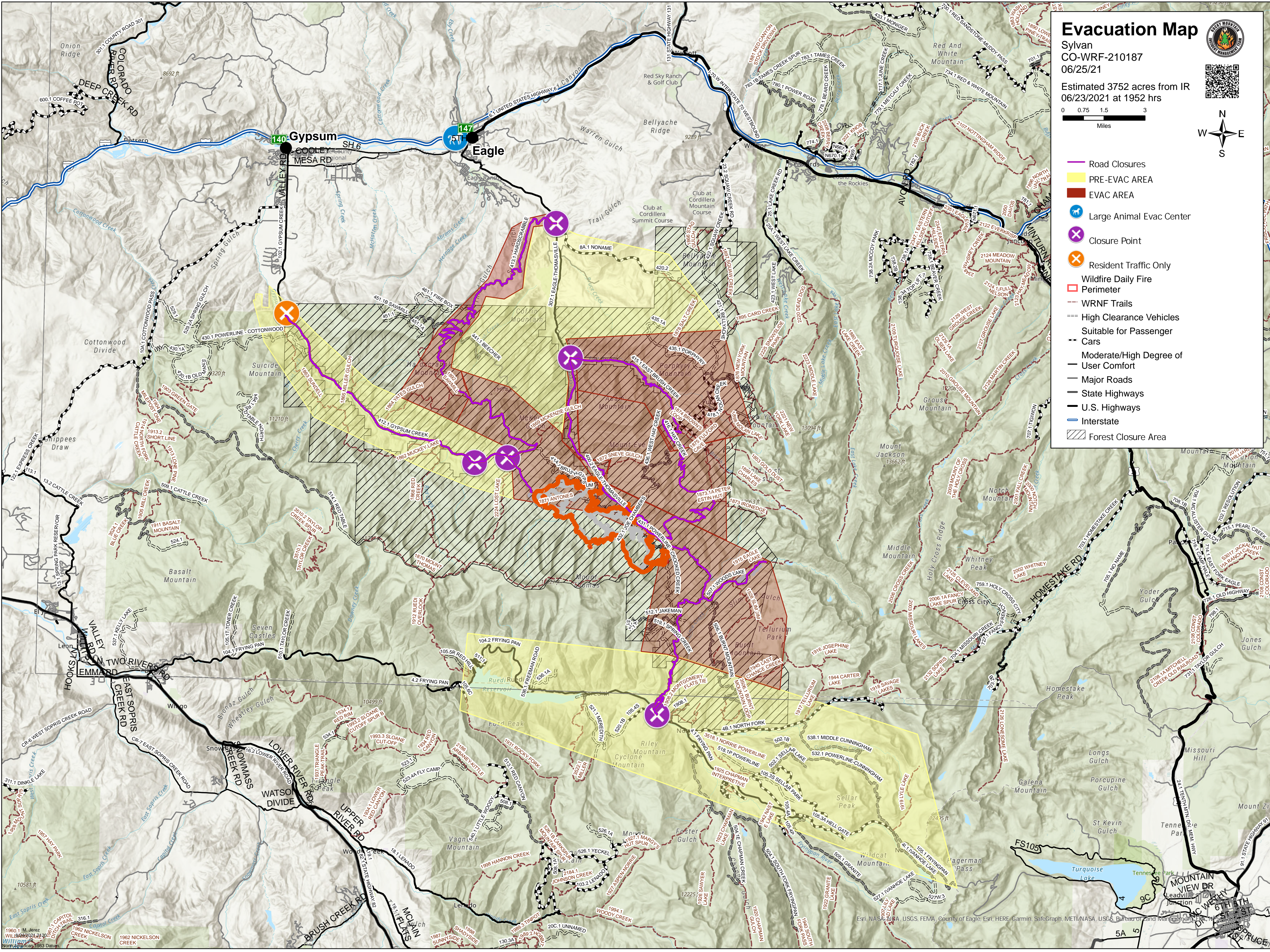
Evacuation Map

Sylvan
CO-WRF-210187
06/25/21

Estimated 3752 acres from IR
06/23/2021 at 1952 hrs



- Road Closures
- PRE-EVAC AREA
- EVAC AREA
- Large Animal Evac Center
- Closure Point
- Resident Traffic Only
- Wildfire Daily Fire
- Perimeter
- WRNF Trails
- High Clearance Vehicles
- Suitable for Passenger
- Cars
- Moderate/High Degree of
- User Comfort
- Major Roads
- State Highways
- U.S. Highways
- Interstate
- Forest Closure Area



1960, 1 M. Jerez
WILBANKS 2021 2020
Northrup 1983 Datum

Esri, NASA, NOAA, USGS, FEMA, County of Eagle, Esri, HERE, Garmin, SafeGraph, METI/NASA, USGS, Bureau of Land Management, and Mapbox