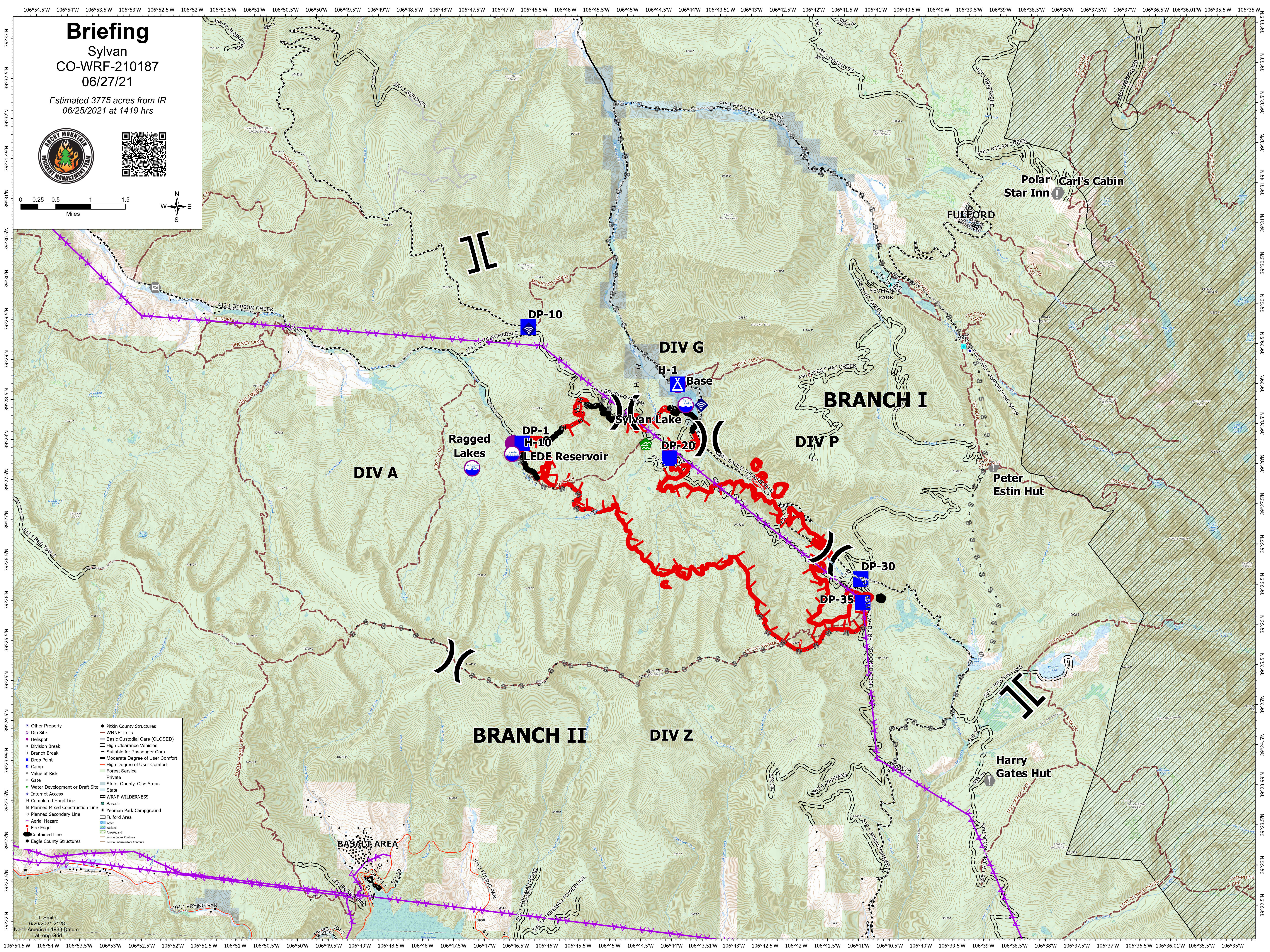
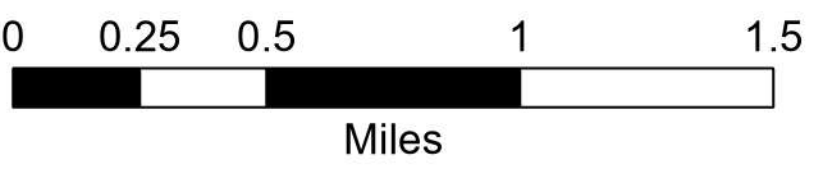


Briefing

Sylvan
CO-WRF-210187
06/27/21

Estimated 3775 acres from IR
06/25/2021 at 1419 hrs



- | | |
|---------------------------------|---------------------------------|
| Other Property | Pitkin County Structures |
| Dip Site | WRNF Trails |
| Hotspot | Basic Custodial Care (CLOSED) |
| Division Break | High Clearance Vehicles |
| Branch Break | Suitable for Passenger Cars |
| Drop Point | Moderate Degree of User Comfort |
| Camp | High Degree of User Comfort |
| Value at Risk | Forest Service |
| Gate | Private |
| Water Development or Draft Site | State, County, City, Areas |
| Internet Access | State |
| Completed Hand Line | WRNF WILDERNESS |
| Planned Mixed Construction Line | Basalt |
| Planned Secondary Line | Yeoman Park Campground |
| Aerial Hazard | Fulford Area |
| Fire Edge | Water |
| Contained Line | Wetland |
| Eagle County Structures | Fine Wetland |
| | Normal Index Contours |
| | Normal Intermediate Contours |