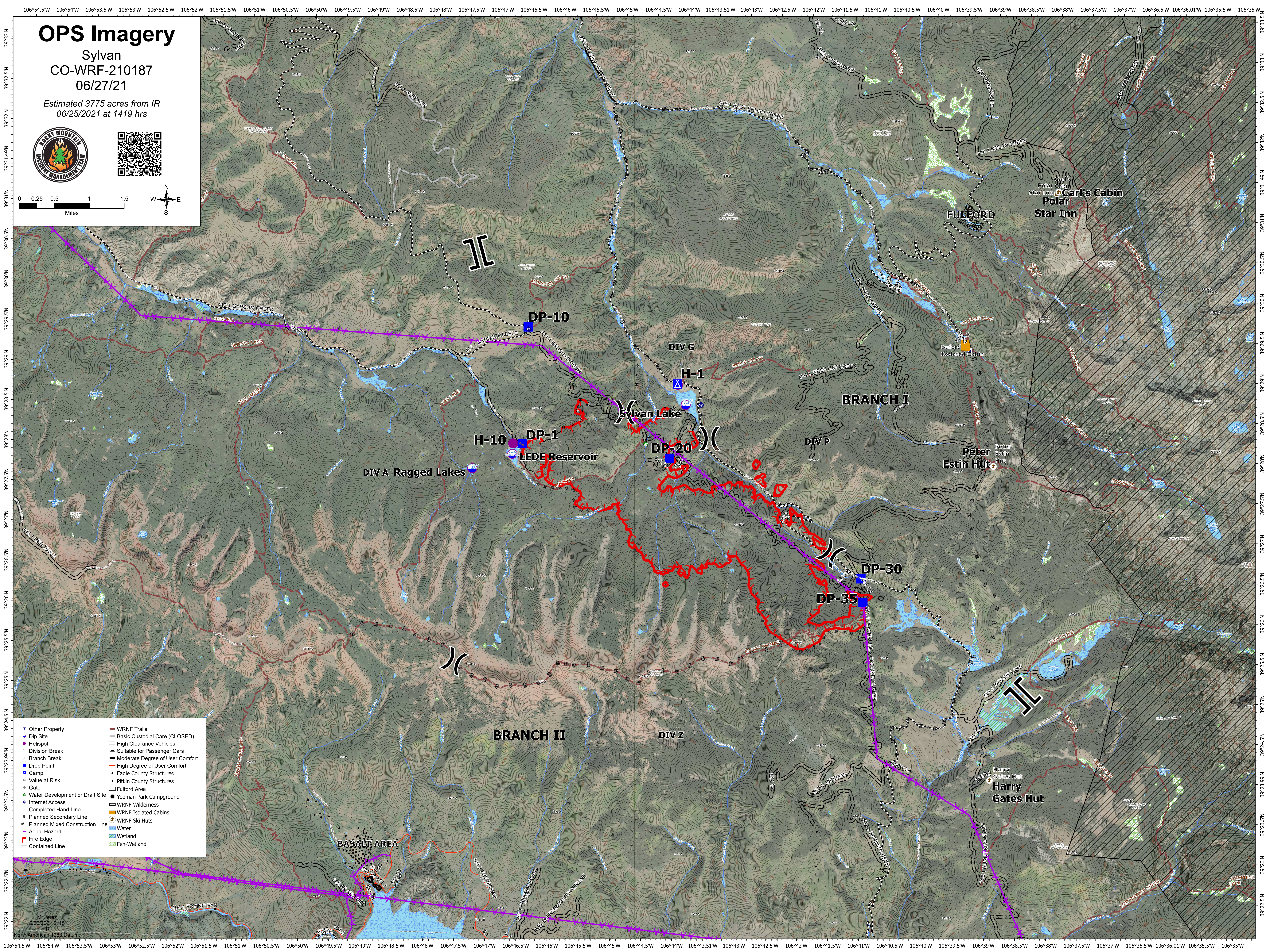
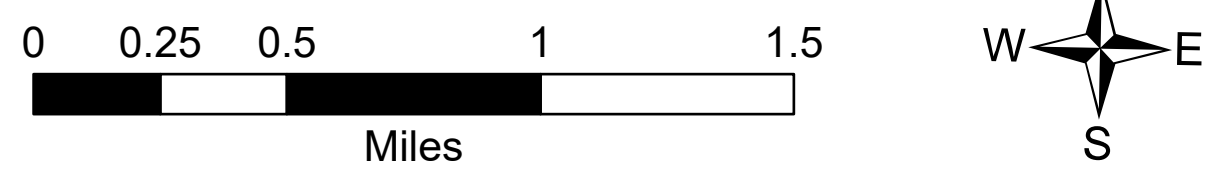


OPS Imagery

Sylvan
CO-WRF-210187
06/27/21

Estimated 3775 acres from IR
06/25/2021 at 1419 hrs



- Other Property
- Dip Site
- Helispot
- Division Break
- Branch Break
- Drop Point
- Camp
- Value at Risk
- Gate
- Water Development or Draft Site
- Internet Access
- Completed Hand Line
- Planned Secondary Line
- Planned Mixed Construction Line
- Aerial Hazard
- Fire Edge
- Contained Line
- WRNF Trails
- Basic Custodial Care (CLOSED)
- High Clearance Vehicles
- Suitable for Passenger Cars
- Moderate Degree of User Comfort
- High Degree of User Comfort
- Eagle County Structures
- Pitkin County Structures
- Fulford Area
- Yeoman Park Campground
- WRNF Wilderness
- WRNF Isolated Cabins
- WRNF Ski Huts
- Water
- Wetland
- Fen-Wetland