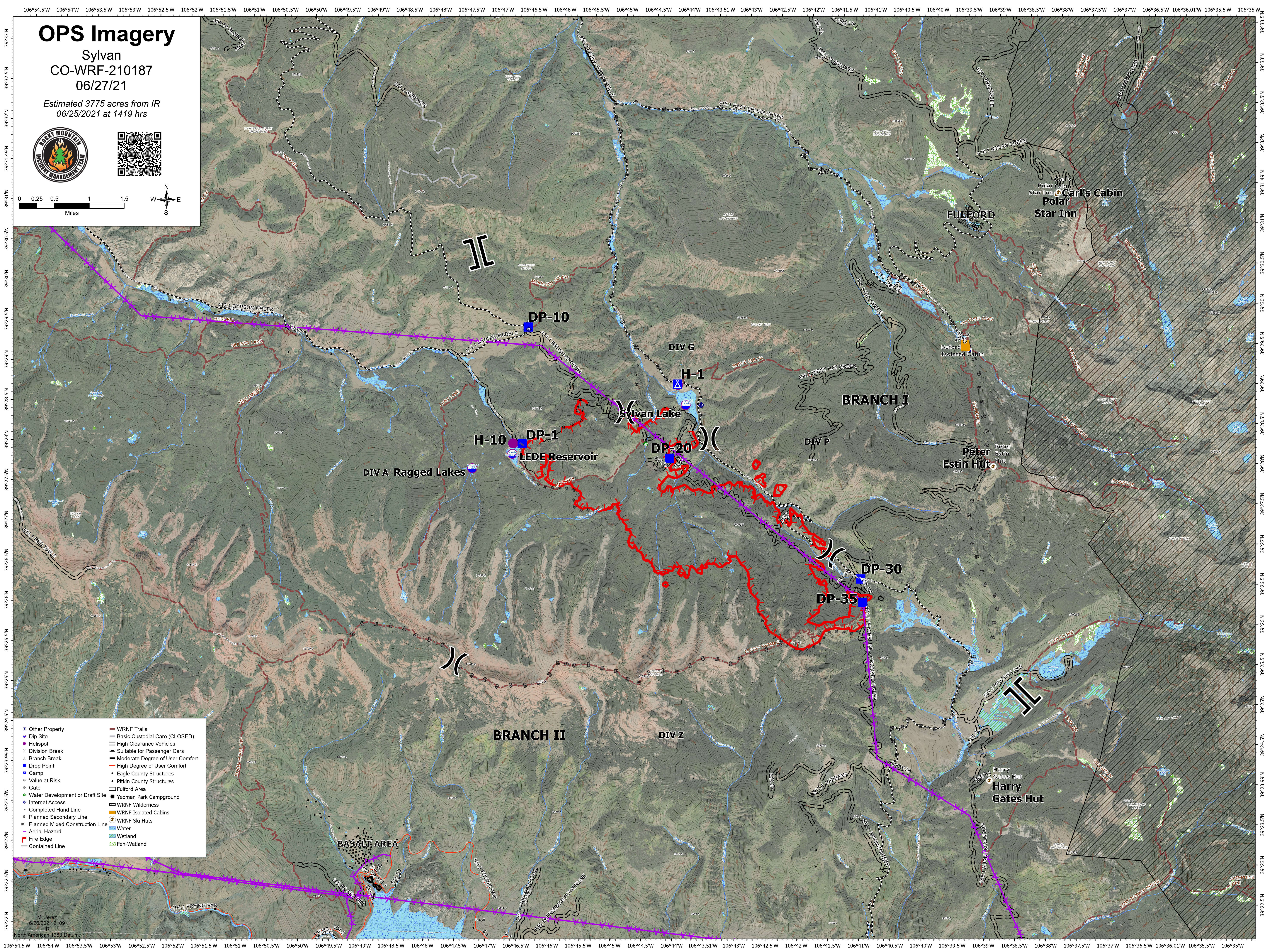
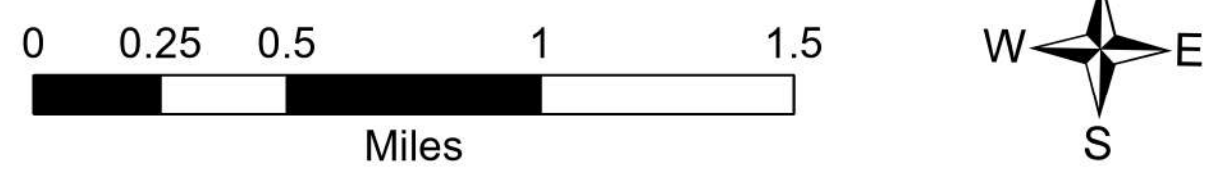


# OPS Imagery

Sylvan  
CO-WRF-210187  
06/27/21

Estimated 3775 acres from IR  
06/25/2021 at 1419 hrs



- |                                 |                                 |
|---------------------------------|---------------------------------|
| Other Property                  | WRNF Trails                     |
| Dip Site                        | Basic Custodial Care (CLOSED)   |
| Helispot                        | High Clearance Vehicles         |
| Division Break                  | Suitable for Passenger Cars     |
| Branch Break                    | Moderate Degree of User Comfort |
| Drop Point                      | High Degree of User Comfort     |
| Camp                            | Eagle County Structures         |
| Value at Risk                   | Pitkin County Structures        |
| Gate                            | Fulford Area                    |
| Water Development or Draft Site | Yeoman Park Campground          |
| Internet Access                 | WRNF Wilderness                 |
| Completed Hand Line             | WRNF Isolated Cabins            |
| Planned Secondary Line          | WRNF Ski Huts                   |
| Planned Mixed Construction Line | Water                           |
| Aerial Hazard                   | Wetland                         |
| Fire Edge                       | Fen-Wetland                     |
| Contained Line                  |                                 |