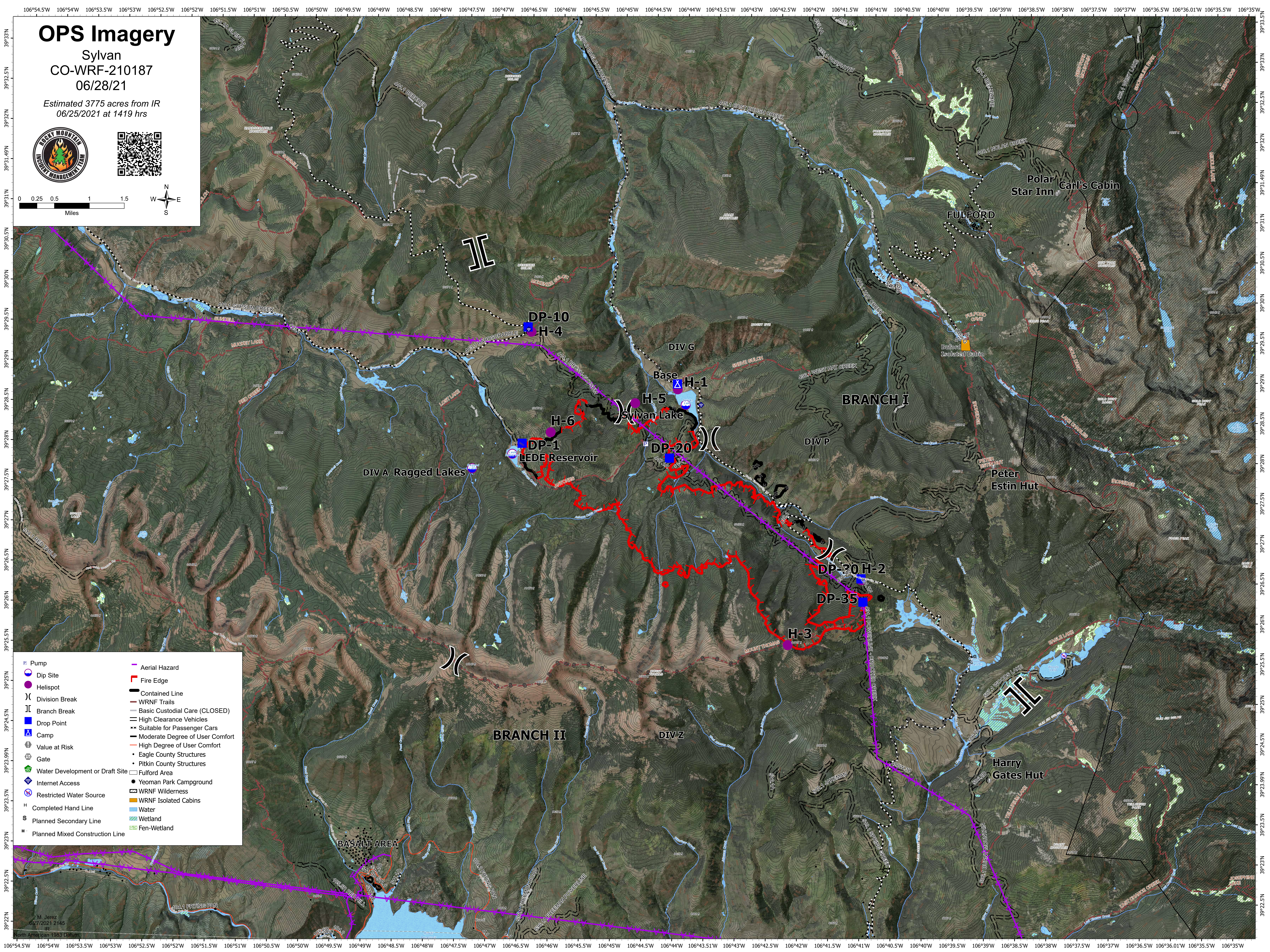
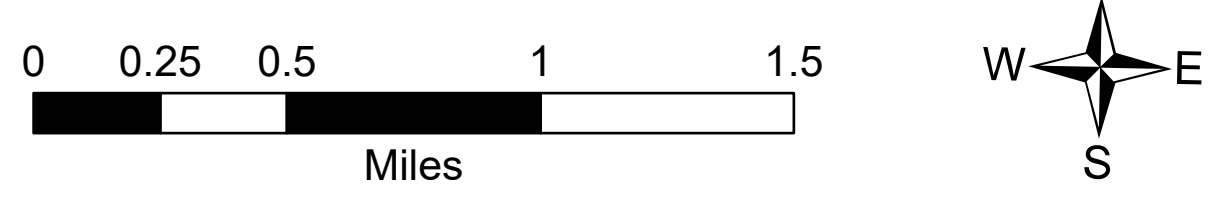


OPS Imagery

Sylvan
CO-WRF-210187
06/28/21

Estimated 3775 acres from IR
06/25/2021 at 1419 hrs



- | | |
|---------------------------------|---------------------------------|
| Pump | Aerial Hazard |
| Dip Site | Fire Edge |
| Helispot | Contained Line |
| Division Break | WRNF Trails |
| Branch Break | Basic Custodial Care (CLOSED) |
| Drop Point | High Clearance Vehicles |
| Camp | Suitable for Passenger Cars |
| Value at Risk | Moderate Degree of User Comfort |
| Gate | High Degree of User Comfort |
| Water Development or Draft Site | Eagle County Structures |
| Internet Access | Pitkin County Structures |
| Restricted Water Source | Fulford Area |
| Completed Hand Line | Yeoman Park Campground |
| Planned Secondary Line | WRNF Wilderness |
| Planned Mixed Construction Line | WRNF Isolated Cabins |
| | Water |
| | Wetland |
| | Fen-Wetland |